



# Architectural Survey of Isle of Wight County and the Town of Windsor

Kimble A. David  
Architectural Historian  
Norfolk, Virginia  
8 March 2006

# Scope of Architectural Survey

- Comprehensive county-wide survey
- Excludes Town of Smithfield
- Includes Town of Windsor
- Total of 160 Architectural Resources
- 150 Architectural Resources in Isle of Wight County
- 10 Architectural Resources in the Town of Windsor
- Architectural Survey Report
- Architectural Survey Records with Photographs and Maps
- Slide Show

# Architectural Survey Products

- Isle of Wight County Architectural Survey
  - 135 Reconnaissance-level Architectural Surveys
  - 4 Preliminary Information Forms for Historic Districts
  - 11 Intensive-level Architectural Surveys
- Town of Windsor Architectural Survey
  - 8 Reconnaissance-level Architectural Surveys
  - 1 Preliminary Information Form for Historic District
  - 1 Intensive-level Architectural Survey
- Total Survey Products
  - 143 Reconnaissance-level Architectural Surveys
  - 5 Preliminary Information Forms for Historic Districts
  - 12 Intensive-level Architectural Surveys

# Previous Architectural Survey

- 240 Previously Surveyed Architectural Resources
- 239 within Isle of Wight County
- 1 within Town of Windsor
- Survey dating from 1970s through Present
- Private survey, Virginia Department of Historic Resources staff survey, Virginia Department of Transportation survey
- 12 Architectural Resources listed in the National Register of Historic Places within Isle of Wight County
- 5 Architectural Resources determined eligible for listing in the National Register of Historic Places

# Historic Time Periods

- European Settlement to Society (1607-1750)
- Colony to Nation (1750-1789)
- Early National Period (1789-1830)
- Antebellum Period (1830-1861)
- Reconstruction and Growth (1865-1917)
- World War I to World War II (1917-1945)
- The New Dominion (1945-Present)

# Historic Themes

- Domestic
- Subsistence/Agriculture
- Government/Law/Political
- Health Care/Medicine
- Education
- Military/Defense
- Religion
- Social
- Recreation/Arts
- Transportation/Communication
- Commerce/Trade
- Industry/Processing/Extraction
- Landscape
- Funerary
- Ethnicity/Immigration
- Settlement Patterns
- Technology/Engineering

# Domestic

- Hall and Parlor Plan
- Clerestory Houses
- Side-passage Plan
- Center-passage Plan
- I-houses
- Additive Construction
- Eclectic and American styles
- Modern styles
- Ancillary Buildings

# Hall and Parlor Plans



Mills-Daughtrey House (046-0014)



Latimer House (046-5162)



William Gray House (046-5234)



Duck House (046-5201)



# Clerestory Houses



Butler House near Carrsville (046-5127)



Elmwood (046-0052)

# Side-passage Plans



Marshall Edwards House (046-5236)



Farmhouse, Ducktown Road (046-5223)



Ashburn House (328-5004)



Julius Cesar Darden House (046-5188)

# Center-passage plan



Farmhouse, Scotts Factory Drive (046-5185)



Randolph House (046-5206)



Homestead (046-5240)



William M. Crocker House (046-5161)

# I-houses



Henry Pruden House (046-5229)



House, Church Street, Town of Windsor (328-5007)



Edwards House (046-5209)



Strawberry Plains (046-5233)

# Additive Construction



Gray Carroll House (046-0064)



Jacob H. Duck House (046-5201)



Young House (046-5243)



Pitt-Blackwell-Turner House (046-5238)

# Eclectic and American Styles



House, Bank Street, Town of Windsor (328-5003)



House, East N&W Street, Town of Windsor (328-5006)



House, Tyler's Beach Road (046-5136)



House, Spivey Town Road (046-5194)

# Eclectic, American and Modern Styles



House, Washington Avenue (046-5124)



Farmhouse, Raynor Road (046-5235)



Farmhouse, Barlow Lane (046-5141)



House, Spivey Town Road (046-5225)

# Ancillary Buildings



Kitchen at Strawberry Plains (046-5233)



Icehouse at Strawberry Plains (046-5233)



Kitchen at J. C. Darden House (046-5188)



Kitchen at Farmhouse, Stallings Lane (046-5187)



# Ancillary Buildings



Slave Quarters at Farmhouse,  
Whispering Pines Trail (046-5237)



Servants/Slave Quarters at William M.  
Crocker House (046-5161)

# Subsistence/Agriculture

- Smokehouses
- Barns
- Animal Pens
- Sheds
- Storage Buildings

# Subsistence/Agriculture



Smokehouse at the Young House (046-5243)



Smokehouse at Strawberry Plains (046-5233)



Smokehouse at Homestead (046-5239)

# Subsistence/Agriculture



Animal Pens at Strawberry Plains (046-5233)



Hay Barn at Strawberry Plains (046-5233)



Agricultural Outbuildings at the Farmhouse,  
Bows and Arrows Road (046-5224)



Barn at Edwards House (046-5209)

# Subsistence/Agriculture



Barn at Vaughan House at Carrsville (046-5203)



Barn at Farmhouse, Raynor Road (046-5235)



Corncrib at Latimer House (046-5162)



Potato House at Julius Caesar Darden House  
(046-5188)

# Government/Law/Political



Customs House (046-0087)



Courthouse Complex Historic District (046-0005)



Walters Prison Camp (046-5242)



# Education



School at Young House (046-5243)



Bay View School (046-5138)



Holly Grove School (046-5156)



Trinity School (046-5230)

# Education



Rescue School (046-5176)



Carrsville Elementary School  
Gymnasium (046-5200)



# Religion

- Gable front churches
- Center steeple churches
- Steepled ell churches
- Classical and Eclectic churches

# Gable Front Churches



Antioch Independent Church (046-5154)



Christian Bethany Church (046-5159)



Windsor Baptist Church (328-5008)



Friends Church (046-5182)

# Center Steeple Churches



Uzzell United Methodist Church (046-5228)



Isle of Wight Christian Church (046-5212)



Shiloh Baptist Church (046-5232)



Christian Home Baptist Church (046-5247)

# Steepled Ell Churches



Central Hill Baptist Church (046-5153)



Battery Park Baptist Church (046-5183)



Woodland United Methodist Church (046-5158)

# Classical and Eclectic Churches



Bethany Presbyterian Church (046-5216)



Benns Church (046-5246)



Boaz Presbyterian Church (046-5249)



Pulaski Baptist Church (046-5125)

# Social



Walters Farmers Union (046-5119)

# Recreation Buildings



Morgart's Beach Hotel Site, FFA FHA Camp Association (046-5241)

# Transportation/Communication



American Telephone and Telegraph Building (046-5164)



# Commerce/Trade



Store, Reynolds Drive (046-5172)



Store, Mill Swamp Road and Sycamore Cross Drive (046-5149)



Store, Old Stage Highway (046-5137)



C. T. Chapman Store (046-5157)

# Commerce/Trade



Store, Intersection Mill Swamp Road and Moonlight Road (046-5144)



Store, Courthouse Highway (046-5166)



Oliver Store and Farm (046-5239)

# Commerce/Trade



Store, East N&W Street, Town of Windsor  
(328-5001)



Store, West N&W Street, Town of Windsor  
(328-5002)



Daughtrey's Store (046-5131)



Store, Walters Highway (046-5123)

# Commerce/Trade



Bank, Zuni Circle (046-5219)



Store, Windsor Boulevard (046-5222)

# Industry/Processing/Extraction



Happy Days Soap Factory (046-5221)



Indika Farms—Walters Buying Plant (046-5120)



Silo, Silo Lane in Zuni  
(046-5218)

# Ethnicity/Immigration



Long Nancy Tynes House (046-5210)

# Settlement Patterns

- Battery Park Historic District (046-5214)
- Town of Windsor Historic District (328-5010)
- Rescue Historic District (046-5213)
- Walters Historic District (046-5215)

# Battery Park Historic District 1680-1955





# Town of Windsor 1853-1955



# Rescue Historic District 1889-1955



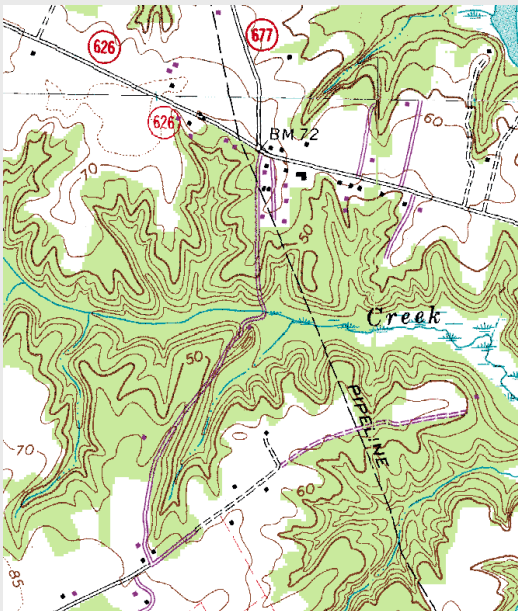
# Walters Historic District 1909-1955



# Technology/Engineering



Seaboard and Roanoke Railroad  
(046-5254)



Road  
Trace,  
Dam and  
Spillway  
at end of  
Bethel  
Church  
Lane  
(046-  
5211)



Virginian Railroad Bed (046-5163)

# Intensive Architectural Survey and Preliminary Information Forms

- 046-0005 Courthouse Complex Historic District
- 046-0014 Mills-Daughtrey House
- 046-0052 Elmwood
- 046-0064 Gray Carroll House
- 046-0087 Customs House
- 046-5188 Darden, Julius Caesar House
- 046-5206 Randolph House
- 046-5210 Long Nancy Tynes House
- 046-5213 Rescue Historic District
- 046-5214 Battery Park Historic District
- 046-5215 Walters Historic District
- 046-5238 Pitt-Blackwell-Turner House
- 046-5239 Homestead
- 046-5240 Oliver House and Store
- 046-5243 Young House
- 328-5008 Windsor Baptist Church
- 328-5010 Windsor Historic District

# Recommendations

- Historic Preservation Staff Position
- Local Tax Incentive for the Rehabilitation of Architectural Resources
- Pursue Listing of Historic Districts
- Certified Local Government Status
- Easement Program
- Future Architectural Survey
- Architectural History Studies
  - Gambrel-roofed Houses in Isle of Wight County
  - Clerestory Houses in Isle of Wight County
- Creation of an Isle of Wight County “Working Farm” Agricultural Museum
- Creation of a “Rails to Trails” along the former Virginian Railroad Bed

