

**An Architectural Survey
in
Nelson County, Virginia**

A Summary Report



Prepared by
Kimberly M. Chen & Associates, Inc.
with
The Nelson County Historical Society
for
The Virginia Department of Historic Resources
and
Nelson County, Virginia

December 1998

TABLE OF CONTENTS

ABSTRACT	Page 1
ACKNOWLEDGMENTS	Page 2
INTRODUCTION AND DESCRIPTION OF PROJECT	Page 3
HISTORIC CONTEXT	Page 4
Historic Themes Identified	Page 5
Theme: Architecture/Landscape Architecture/ Community Planning	Page 5
Theme: Domestic	Page 7
Theme: Subsistence/Agriculture	Page 11
Theme: Funerary	Page 12
Theme: Commerce/Trade	Page 13
Theme: Ethnicity/Immigration	Page 13
Theme: Religion	Page 14
Theme: Education	Page 14
Theme: Government/Law/Political	Page 15
Theme: Transportation/Communication	Page 15
Theme: Industry/Processing/Extraction	Page 15
Theme: Health Care/Medicine	Page 16
RESEARCH DESIGN	Page 17
SURVEY FINDINGS	Page 17
EVALUATION	Page 17
RECOMMENDATIONS FOR FURTHER STUDY	Page 21
APPENDIX A: VDHR TIME FRAMES	Page 23
APPENDIX B: VDHR THEMES AND ASSOCIATED RESOURCES	Page 24
APPENDIX C: PROPERTIES RECOMMENDED FOR SURVEY AT THE INTENSIVE LEVEL	Page 31
APPENDIX D: IPS GENERATED REPORTS	

LIST OF ILLUSTRATIONS

	Hat Creek Farm (062-5064)	Cover
Figure 1:	Rocky Knob (062-5044)	Page 8
Figure 2:	Glowknotnuss Hazel Shade (062-5018)	Page 9
Figure 3:	Hat Creek Farm (062-5064)	Page 9
Figure 4:	East Branch Estate (062-5070)	Page 10
Figure 5:	Chestnut Oak (062-5052)	Page 10
Figure 6:	Kitchen, Goodwin Plantation (062-5045)	Page 11
Figure 7:	Log Barn and Corn Crib, Mountain View (062-5033)	Page 11
Figure 8:	Slave Quarters, Goodwin Plantation (062-5045)	Page 12
Figure 9:	Cemetery, Hill House (062-5037)	Page 12
Figure 10:	Thomas James Carter Store (062-5045)	Page 13
Figure 11:	New Mount Church (062-5048)	Page 13
Figure 12:	Jonesboro Baptist Church (062-5040)	Page 14
Figure 13:	Claypool School, Beech Spring Farm (062-5013)	Page 14
Figure 14:	Gladstone Depot (062-5058)	Page 15

ABSTRACT

The Nelson County Survey Project was conducted between October 1997 and December 1998 by members of the Nelson County Historical Society and the historic preservation consulting firm of Kimberly M. Chen & Associates, Inc. (KMC&A). The project was carried out under the direction of the Virginia Department of Historic Resources (VDHR) and Nelson County utilizing funds from the VDHR Survey and Planning Cost Share program. The on-site surveys documented and assessed seventy-five properties at the reconnaissance-level. Each resource was physically evaluated, defined by its architectural style, photographed with black and white film, and placed within the historic context of Nelson County.

This project was a continuation of a survey conducted in 1992-1993 by the Thomas Jefferson Planning District, the historic preservation and planning consulting firms of Land and Community Associates and Douglas Mc Varish, and the VDHR. The 1992-1993 project surveyed 250 properties at the reconnaissance-level, thirty properties at the intensive-level and identified 210 properties as having local significance.

After reviewing the 1992-1993 and 1997-1998 surveys, the following recommendations are made for future cultural resource studies and documentation in Nelson County.

- An Historic Overview of Nelson County, Virginia should be developed.
- A Phase III Architectural survey should be conducted.
- Preliminary Information Forms (PIF) for the towns of Lovingston, Massies Mill, Norwood and Shipman should be developed.

ACKNOWLEDGMENTS

KMC&A wishes to recognize the following members of the Nelson County Historical Society. They identified the properties to be recorded, and conducted the on-site surveys.

Ray and Roberta Dunn
Sam and Marjorie Eggleston
Edward and Carol Ely
Dorothy Giles
Peggy Lawhorne
Emily Moxley
Irma Fortune Rube
Katharine and David Townsend
Campbell Tuskey
Catherine and William Whitehead
Clifford E. and Louise M. Wood

Without their hard work and dedication this project would not have been possible. Special thanks must be extended to Catherine and William Whitehead and Marjorie Eggleston for coordinating the survey and maintaining the products in an organized manner. Irma Fortune Rube wished to extend her appreciation to Margaret Small for her assistance in locating and selecting the sites Ms. Rube surveyed. David Edwards and Margaret Peters of the VDHR need to be thanked for conducting the initial volunteer training session and for their continued support throughout the project. Finally, a special word of appreciation is offered to the property owners who shared their homes and knowledge with the surveyors.

INTRODUCTION AND DESCRIPTION OF PROJECT

In 1992-1993, the Thomas Jefferson Planning District Commission surveyed historic properties in Nelson County and prepared a survey and planning report. In 1997, the County and the Nelson County Historical Society decided to supplement the existing data base by surveying an additional seventy-five properties utilizing funds from the VDHR Survey and Planning Cost Share program. The VDHR agreed to train members of the Nelson County Historical Society to conduct reconnaissance-level surveys. The volunteers were responsible for the field surveys, which included completing VDHR reconnaissance-level survey forms, producing site plans, photographing the primary and secondary resources and mapping each property on the appropriate section of a USGS map.

The VDHR contracted with KMC&A, a consulting firm specializing in historic preservation, to review all volunteer completed survey forms, to make all necessary technical revisions, and to enter the forms into the Integrated Preservation Software (IPS) data base. The consultant was also responsible for the preparation of an executive summary report for the surveyed properties. The report should be directly relate to *Historic Resources Identification and Assessment of Nelson County, Virginia*, a survey report prepared in 1992-1993. The executive summary report should be accompanied by IPS-generated chronological, numerical and thematic reports. KMC&A was also required to participate in a final presentation of the survey findings to members of the community. In addition to these contracted responsibilities, KMC&A assumed responsibility for the labeling of photographs and negatives, the labeling and preparation of file folders and their contents, and the final mapping of all properties on the appropriate USGS maps.

HISTORIC CONTEXT

The VDHR recommends that the historic context portion of a survey report be presented chronologically in accordance with nine significant time frames and eighteen themes that have been established by VDHR. The surveyed resources should be discussed by theme within the time period in which they were constructed or modified. Within each of these time periods, VDHR has defined eighteen themes which represent the broad range of human activities since prehistoric times. The eighteen themes are Domestic, Subsistence/Agriculture, Government/Law/Political, Funerary, Ethnicity/Immigration, Settlement Patterns, Architecture/Landscape Architecture/Community Planning, Technology/Engineering, Recreation/Arts, Transportation/Communication, Commerce/Trade, Industry/Processing/Extraction, Landscape, Health Care/Medicine, Education, Military/Defense, Religion, and Social. A single resource can represent multiple themes. A listing of VDHR's established time frames and definitions for each of the eighteen themes can be found in Appendices A and B.

The 1992-1993 survey report, *Historic Resources Identification and Assessment of Nelson County, Virginia*, departed from the chronological and thematically organized presentation. Rather, time frames and resources were organized by theme. The 1992-1993 survey focused on four out of the eighteen themes -- Domestic, Subsistence/Agriculture, Settlement Patterns and Industry/Processing/Extraction. The Settlement Pattern Theme discussed Native American and early European settlement in the county; the development of the towns of Lovingston, Shipman, Norwood, Massies Mill/Tyro, Schuyler, Wingina, and Key's Gap; and the settlement of the Rockfish Valley. Under the Domestic Theme, building materials and construction methods, floor plans and architectural styles were addressed along with the variety of secondary domestic resources. The Subsistence/Agriculture Theme described the various farming activities and the related buildings. The Industry/Processing/Extraction Theme contained an explanation of the industrial development of the county and the representative buildings.

The resources identified in the 1997-1998 survey cover five of the nine time frames and represent twelve of the eighteen themes. The five time frames represented by surveyed properties are Colony to National (1750-1789), Early National Period (1789-1830), Antebellum Period (1830-1860), Reconstruction and Growth (1865-1917), and World War I to World War II (1917-1945). The themes associated with the seventy-five surveyed properties are displayed in the following chart.

VDHR Historic Themes Represented	# of Associated Properties
Architecture/Community Planning	75
Domestic	63
Subsidence/Agriculture	46
Funerary	16
Commerce/Trade	11
Ethnicity/Immigration	9
Religion	7
Education	3
Government/Law/Political	2
Health Care/Medicine	1
Industry/Processing/Extraction	1
Transportation/Communication	1

Architecture/Landscape Architecture/Community Planning Theme

In discussing the thirty properties surveyed at the intensive-level, the 1992-1993 survey report made the observation that despite living in a remote region many of the early settlers of Nelson County, namely Drs. William Cabell and Thomas Massie, were well acquainted with current architectural styles and trends. This sophistication is evident in their homes and those of their heirs and peers. The early architecture of the region was also influenced by German and Scotch-Irish artisans who were willing to experiment with form and style. There appeared to be a preference for Georgian-style architecture which persisted well into the early nineteenth century. The Federal style was also well represented where as the later styles, such as Greek Revival, had less of a regional impact because the major periods of building construction had already occurred. The survival of earlier style houses and their relatively unaltered state was also noted. Of the buildings recorded at the reconnaissance-level, the 1992-1993 survey report stated that the majority of these buildings in Nelson County demonstrated little evidence of high-style ornamentation.

These same observations can be applied to the buildings surveyed in 1997-1998. As the result of a rural location buildings were more often influenced by available building materials and traditional construction methods rather than by popular architectural styles and trends imported from urban areas. Thus, the dominance of earlier styles well beyond their popularity in urban areas and the persistence of traditional forms can be observed. It was also noted that several properties were excellent examples of the blending of various architectural influences. This blending of styles occurred when early dwellings were expanded rather than demolished. The following chart illustrates the architectural styles identified as part of the 1997-1998 survey and their associated time frames.

Architectural Style	# of Resources
Colony to National (1750-1789)	6
Colonial	3
Georgian	2
Early Republic	1
Early National Period (1789-1830)	19
Federal	6
Early Republic	4
Greek Revival	4
Colonial	2
Georgian	2
Early Classical Revival	1
Antebellum Period (1830-1860)	11
Mid 19th Century	4
Federal	2
Greek Revival	2
Early Classical Revival	1
Gothic Revival	1
Italianate	1

Architectural Style	# of Resources
Reconstruction & Growth (1865-1917)	35
Late 19th and 20th Century American Movements	9
Colonial Revival	8
Late Victorian	6
Queen Anne	4
Late 19th and 20th Century Revivals	3
Gothic Revival	2
Classical Revival	1
Mid 19th Century	1
Stick/Eastlake	1
World War I to World War II (1917-1945)	4
Gothic Revival	2
Colonial Revival	1
Prairie School	1

Domestic Theme

Presented in March 1993, *Historic Resources Identification and Assessment of Nelson County, Virginia*, provided a detailed picture of the historical development of domestic resources in the county and discussed building materials and construction methods. Wood was the primary building material while brick was reserved for larger houses belonging to more affluent citizens. Examples of stone dwellings were rare but the use of stone for the construction of foundations and chimneys were wide spread. The survival of a large number of log dwellings and outbuildings were also noted. Single pile, one-room deep, hall-and-parlor-plan dwellings with gable roofs were the most typical building form noted, followed closely by center-hall plan, I-house, dwellings. The report also described the variety of domestic outbuildings associated with the primary resources surveyed.

Sixty-two of the seventy-five properties surveyed in 1997-1998 were documented as associated with the Domestic Theme. The resource types identified included sixty-one single-dwellings, one servant's quarter, and 133 domestic outbuildings. The secondary domestic outbuildings included numerous barns and sheds, smoke or meat houses, garages, corncribs, kitchens, animal shelters, tobacco barns, servants' quarters and tenant houses. A complete list of resource types is included in the Evaluation section of this report.

The documented single-dwellings were typically one-and-a-half or two-stories in height, constructed on slightly raised foundations of stone. The roofs were predominately side-gables and covered with standing-seam metal. The chimneys, primarily constructed of stone rubble often with brick stacks, were mostly exterior-end. The houses tended to be single pile and three to five-bays wide with central-passage plans. Most had one-story porches on the facade with little ornamentation. The architectural styles ranged from the Colonial-styles of the mid-eighteenth century to the Prairie School of the early-twentieth century. The most frequently identified style was the Colonial Revival style from the late-nineteenth and early-twentieth centuries.

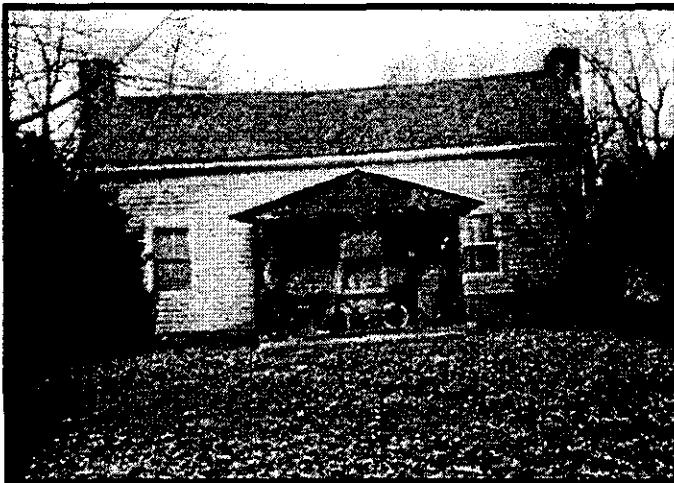


Figure 1 Rocky Knob (062-5044) ca. 1765

Colony to National Period (1750-1789)

Six single-dwellings were recorded from this period. The typical dwelling was one-and-a-half-stories in height and constructed of logs. No brick dwellings were recorded in this time period. All of these houses had side-gable roofs and exterior-end chimneys constructed of stone. They were typically single pile, three-bays wide with central-passage plans. The predominant architectural styles were Colonial and Georgian. Rocky Knob

(062-5044) is a representative example of the Colonial period houses documented as part of the survey. On the other hand, Cherry Hill (062-5054), a two-story, frame dwelling is a departure from the typical resource observed, especially, the coursed ashlar chimneys which show a level of skill and sophistication not represented by the stone rubble chimneys usually found.

Early National Period (1789-1830)

The nineteen single-dwellings dating from this period tended to be one-and-a-half-stories to two-stories in height with two-story dwellings dominating after 1820. Wood-frame was the predominant building material, followed closely by logs. Three brick dwellings and one stone house dating from this period were recorded. These dwellings were almost exclusively single-pile houses with central-passage plans, side-gable roofs, and exterior-end, brick chimneys. The principal architectural style was Federal, with Georgian, Early Classical Revival and Greek Revival also represented. Rose Hill (062-5057) is representative of the typical Early National period house in Nelson County. While Glowknotnuss Hazel Shade (062-5018), a one-and-a-half-story, central-passage, log dwelling with exterior-end, stone rubble chimneys, is reminiscent of the Colonial period houses. The Sneed-Saunders House (062-5051) is an unusual, one-and-a-half-story, hall-parlor plan, stone dwelling. Redland Farm (062-5008/062-0063) is typical of the brick houses observed.



Figure 2 Glowknotnuss Hazel Shade (062-5018) ca. 1800



Figure 3 Hat Creek Farm (062-5064) ca. 1830

Antebellum Period (1830-1860)

Six of the ten single-dwellings documented were two-stories in height. The remaining dwellings were one-and-a-half-stories in height. Wood-frame was the dominant building material with brick being used for foundations and exterior-end chimneys. These houses were all single-pile dwellings and most had central-passage plans. Federal was still the predominant architectural style with a few representative examples of Greek Revival, Italianate and Gothic Revival. Hat Creek Farm (062-5064) and Embly (062-5062) are good examples of the typical Antebellum period dwellings observed. The Dodd Cabin (062-5017), a one-room, one-and-a-half-story, log house with a stone rubble chimney more closely resembles a Colonial period house.



Figure 4 East Branch Estate (062-5070)
ca.1891

Reconstruction and Growth Period (1865-1917)

The majority of single-dwellings recorded, twenty-six, were from this time period. The Harvey-Bryant House (062-5066) and East Branch Estate (062-5070) are illustrative of the two-story, single-pile, central-passage plan, dwellings which dominated. A few more substantial, double-pile, two-and-a-half-story dwellings were noted of which Nodei (062-5042) is a good example. Wood frame was the most favored building material with brick used for foundations and interior- and

exterior-end chimneys. The use of brick, central-interior chimneys, as seen at Greenfield (062-5004), began to appear during this time period. While several buildings still displayed the more traditional stone, exterior-end chimneys, of which the Bryant House (062-5065) is a good example. Colonial Revival and Queen Anne were the principal architectural styles.

World War I to World War II Period (1917-1945)

Only two dwellings were recorded from this time period. Both were two-story, double pile, frame houses with central-passage plans. One had central-interior, brick chimneys and the other had exterior-end, brick chimneys. The Grant House (062-5029) was built in the Colonial Revival-style while Chestnut Oak (062-5052) is more representative of the Prairie School-style.



Figure 5 Chestnut Oak (062-5052) ca. 1925



Figure 6 Kitchen, Goodwin Plantation
(062-5045) ca. 1835

Subsistence/Agriculture Theme

According to the 1992-1993 survey report, agricultural pursuits have long been main stays of Nelson County's economy. The cultivation of tobacco and grain dominated until after the Civil War. After the war, the increased demand for agricultural products caused a significant growth in the County's population and a diversification of the crops grown. Apples, tobacco and corn dominated with orchard development taking a center stage by the mid-nineteen-twenties. The County became well known for its apples, peaches and other fruits. By 1925, 66 percent of the County's total population were farmers and the average farm contained 105.2 acres. Associated with these agricultural pursuits were a wide variety of agricultural outbuildings including barns of different types, corn cribs, and sheds.



Figure 7 Log Barn and Corn Crib at
Mountain View (062-5033)

The 1997-1998 survey identified forty-six properties associated with this theme and recorded 133 historic, outbuildings associated with the cultivation of the land. Barns and sheds of various types were the most frequently recorded dependencies, followed in number by smoke or meat houses and corncribs. The number of surviving detached kitchens was of particular interest because they were so often lost to fires. Also, of note were the extant servant or slave quarters. Unfortunately, the majority of these buildings were in extremely deteriorated condition. For a complete list of the

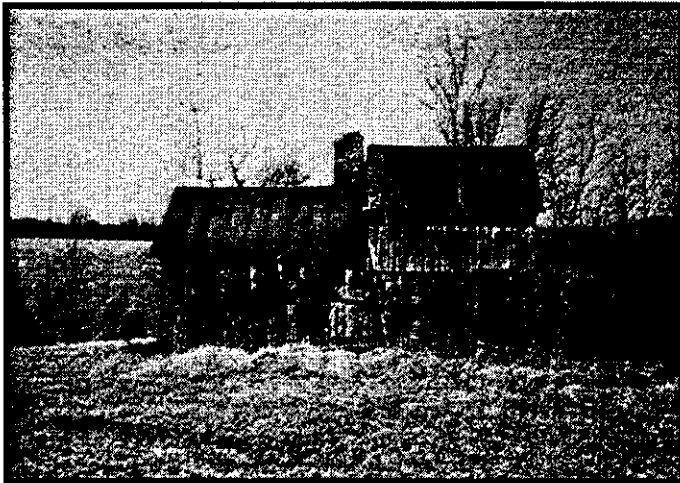


Figure 8 Slave Quarters, Goodwin Plantation (062-5077) ca. 1835

outbuildings inventoried refer to the Evaluation portion of this document. Cherry Hill (062-5054) ca. 1775, Wellington (062-5063) ca. 1826, Goodwin Plantation (062-5045) ca. 1835, the John Morris Farm (062-5034) ca. 1870, and Chestnut Oak (062-5052) ca. 1925 are representative examples from each of the significant time frames of the type and extent of properties associated with the Subsistence/Agriculture Theme and the assortment of dependencies observed.

Funerary Theme

Sixteen of the properties surveyed had associated cemeteries -- six churches and ten residences. The earliest church cemetery recorded, Mt. Shiloh Baptist Church (062-5026), dates from the 1870s. While the earliest private cemetery was associated with Rocky Knob (062-5044) built ca. 1765. Sparse information was gathered on the cemeteries noted as part of this survey. The majority were small, with fewer than ten marked graves. Most of the graves were marked with simple, plain headstones with little artistic embellishment. A few of the cemeteries were enclosed with fences and some had plantings, especially boxwood, around the perimeter or near the graves.



Figure 9 Hill House Cemetery (062-5037) ca.1800



Figure 10 Thomas James Carter Store
(062-5073) ca. 1903

Commerce/Trade Theme

The survey documented eleven properties associated with the theme of commerce and trade. The resource types included general stores, automobile repair garages and a tavern. The Betsy Taylor Tavern (062-5060), built ca. 1780, was the earliest recorded property associated with this theme. It is a 1-1/2-story, hall-and-parlor plan, Colonial-style building. The Bowling Store (062-5028), built ca. 1838, and the Goodloe Store (062-5012), constructed in the 1890s, are representative of the country or general stores documented.



Figure 11 New Mount Church (062-5048)
1885

Ethnicity/Immigration Theme

The nine resources associated with this theme included slave or servant quarters, one-room school houses and churches. All of the resources were associated with the African-American community in Nelson County. The Sneed-Saunders House (062-5051), built ca. 1790, was associate with this theme because it was reportedly constructed of native stone by slave labor and there is a slave cemetery on the property. The Quarters, Goodwin Plantation (062-5077) erected in the 1830s is representative of the surviving slave quarters documented in the

County. One of the outbuildings at the John Morris House (062-5034), ca. 1870, was constructed as a one-room school for the neighboring children. It was later used by African-American students after the Bryant school was built. The survey recorded two African-American churches, New Mount Church and Cemetery (062-5048) and Mt. Airy Church and Cemetery (062-5022), built in 1885 and 1910, respectively.

Religion Theme

The seven churches recorded in Nelson County were built between 1870 and 1923. These churches, as illustrated by Mt. Shiloh Baptist Church and Cemetery (062-5026), built in 1870, typically were gable front buildings with a smaller front-gable-roofed narthex. The majority of the buildings have a steeple with a spire rising above the narthex and Gothic arched windows along the sides. Jonesboro Baptist Church (062-5040), built in 1912, is atypical of the churches documented. This building has

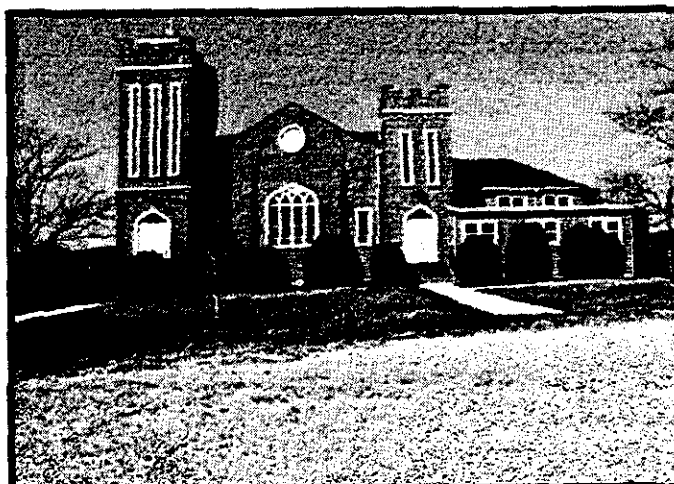


Figure 12 Jonesboro Baptist Church (062-5040) 1912

crenelated towers at each corner and a wide gable between with a four-part tracery window and implied buttresses. The building is clad in wood shingles which is different from the wood siding or brick veneer observed in the other church buildings.



Figure 13 Claypool School, ca. 1870, at Beech Spring Farm (062-5013)

Education Theme

Two of the schools recorded date from the 1870s and were documented as secondary resources at Beech Spring (062-5013), and the John Morris House (062-5034). Both of these schools have been converted to storage buildings. The third school recorded, Old Fleetwood School (062-5074), was built in 1907 and used as a high school until 1933. It has since been converted to a single-family dwelling.

Government/Law/Political Theme

Two resources, the Avon Post Office (062-5006) built ca. 1900 and the Caid Whitehead House (062-5061) constructed in 1910, were associated with this theme. The Caid Whitehead House (062-5061) was included because it was the site of several Democratic Committee meetings.

Transportation/Communication Theme

The Gladstone Depot (062-5058) was the only resource associated with this theme to be recorded. The Gladstone Depot (062-5058), an Eastlake-style building, was constructed in 1889 by the Chesapeake and Ohio Railroad. The town of Gladstone grew up around the depot which was built at the halfway point in the line between Richmond and Clifton Forge.



Figure 14 Gladstone Depot (062-5058) 1889

Industry/Processing/Extraction Theme

The fourth theme discussed in the 1992-1993 survey report was Industry/Processing/Extraction. Because of the rivers, namely the James, Tye and Rockfish, within the boundaries of Nelson County, water powered mills were among its first major industries. Lumber Milling soon harnessed the power of the rivers as well. Mining was a principal twentieth century industry in the county. Rutile, ore Ilmentite, Aplite, and Vanadium were among the products mined and processed. The quarrying of soapstone was a leading industry in the late-nineteenth and early-twentieth centuries. A single secondary resource, the mill at the Coffey House (062-5030) built in 1910, was the only property associated with this theme to be recorded as part of this project.

Health Care/Medicine Theme

Blue Rock (062-5069) built in the 1880s was identified with this theme because of its association with Dr. Thomas Massie, a leading physician in Nelson County. The original dwelling was destroyed by fire in the 1880s and it is believed that the present house incorporated Dr. Massie's office when it was built. The property was owned by the Massie family for a number of generations.

RESEARCH DESIGN

The goal of the project was to continue to build on the architectural data base developed as part of the 1992-1993 survey project undertaken by the Thomas Jefferson Planning District, Nelson County and the VDHR. The project scope included surveying and documenting seventy-five properties at the reconnaissance-level. The approach was to train volunteers, members of the Nelson County Historical Society, to conduct the reconnaissance-level surveys and to hire a consultant to review and input the survey forms into the IPS data base. The properties to be surveyed were selected by the members of the Nelson County Historical Society who would conduct the survey work. The focus of the surveys was to examine rural properties because the 1992-1993 survey had concentrated on the towns of Lovingston, Massies Mill, Norwood and Shipman. Furthermore, the properties to be surveyed were selected from each of the county's magisterial districts so that there would be a geographically diverse sampling. Finally, although an emphasis was placed on antebellum structures, the goal was to record properties representative of later development in the county as well as a sampling of various resource types other than domestic.

SURVEY FINDINGS

The project resulted in the survey of seventy-five properties at the reconnaissance-level. Two of the properties Cove Creek or Trinity (062-5027/062-0437) and Redland Farm or the Jacob Arisman House (062-5008/062-0063) had been included in previous surveys. Each survey form provides a detailed physical description of the primary resource and a brief description of the secondary resources on the site. Each property was evaluated and placed in a local historical and architectural context. The forms are accompanied by black-and-white photographic documentation and simple site plans that depict the relationship between primary and secondary resources and man made or natural features. The survey results were then entered into the VDHR-Integrated Preservation Software data base which allows for the manipulation of the surveys to enhance their value as part of a statewide research tool.

EVALUATION

The IPS generated reports are designed to yield specific types of information which allow for the quantitative analysis of the survey findings. Each IPS record represents a single property. Seventy-five properties were identified by members of the Nelson County Historical Society and surveyed during the course of the project. All seventy-five properties can be categorized as a "building" as defined in *National Register Bulletin 15: How to Apply the National Register Criteria for Evaluation*:

Building: A building, such as a house, barn, church, hotel, or similar construction, is created to shelter any form of human activity. "Building" may also refer to an historically, functionally related unit, such as a courthouse and jail or a house and a barn.

For each property surveyed a complete list of the primary and secondary resources associated with the property was compiled. Each resource was classified as historic or non-historic. Resources were considered historic if they were fifty years of age or more. The identified resources were also classified by a specific resource sub-types or "wuzits" which refers to the original purpose for which the building was constructed. For the seventy-five properties surveyed 288 resources were identified. The following is an alphabetical listing of the resource types identified and their historic status.

Primary and Secondary Resources:

RESOURCE SUB-TYPE	NUMBER FOUND ON ALL PROPERTIES	NUMBER FOUND TO BE HISTORIC
Animal Shelter	11	9
Barn	38	25
Blacksmith Shop	1	1
Camp Cabin	1	1
Carriage House	1	1
Cemetery	16	16
Church	7	7
Cistern	1	1
Commercial Building	6	6
Corncrib	12	9
Depot	1	1
Foundation	2	2

RESOURCE SUB-TYPE	NUMBER FOUND ON ALL PROPERTIES	NUMBER FOUND TO BE HISTORIC
Garage	15	7
Guest House	2	2
Ice House	2	2
Kitchen	10	10
Milk House	1	1
Mill	1	1
Office/Office Bldg.	1	0
Other	6	2
Pool/Swimming Pool	2	0
Post Office	1	1
Privy	1	1
Pump House	2	2
Road Trace	1	1
Ruins	2	2
School	2	2
Servant Quarters	4	4
Shed	34	18
Shelter	1	0
Single Dwelling	66	62
Smoke/Meat House	16	16
Spring/Springhouse	2	2
Stable	1	1
Tenant House	3	3

RESOURCE SUB-TYPE	NUMBER FOUND ON ALL PROPERTIES	NUMBER FOUND TO BE HISTORIC
Tobacco Barn	7	7
Water Tower	1	1
Well	2	2
Well House	3	3
Workshop	2	1
Total	288	233

Primary Resources:

RESOURCE SUB-TYPE	NUMBER FOUND TO BE HISTORIC
Church	7
Commercial Building	3
Depot	1
Post Office	1
Single Dwelling	61
School	1
Servant Quarters	1
Total	75

RECOMMENDATIONS FOR FURTHER STUDY

Develop an Historic Overview of Nelson County, Virginia

While *Historic Resources Identification and Assessment of Nelson County, Virginia* contains a great deal of information about the history and development of Nelson County it is not organized in a chronological fashion nor is it comprehensive. The 1992-1993 survey only focused on four of the eighteen themes. While the 1998 survey documented properties associated with an additional nine themes, essays were not produced to explain the importance of these activities in the overall development of the county. It is therefore recommended that a chronological overview be developed for the county along with essays on each of the eighteen themes. This document would form a comprehensive frame work within which the significance of surveyed resources in the county could be evaluated.

Conduct a Phase III Architectural Survey

Over the years, many properties in Nelson County have been individually listed on the State and/or the National Register of Historic Places. In 1992-1993, 250 properties were surveyed at the reconnaissance-level. Additionally, 30 properties in the Rockfish Valley area of the county were surveyed at the intensive-level. The survey also identified 210 properties as having local significance. These properties were not surveyed but were indicated on a geographic database for future survey. The seventy-five properties surveyed as part of the 1997-1998 project were all documented at the reconnaissance level. Approximately, twenty-three of these properties were on the list of locally significant properties identified in 1992-1993. It is difficult to say for sure the exact number because of name variations. To alleviate future confusion or duplication it is recommended that prior to beginning a Phase III Architectural Survey, a thorough review of all maps which show previously documented or identified properties should be conducted. Also, properties not in the IPS database should be entered.

The Phase III Architectural Survey should have three major components. First, the remaining 210 properties identified in 1992-1993 as having local significance should be recorded at the reconnaissance or intensive-level, depending on their historic associations and architectural integrity. Second, twenty-seven properties documented at the reconnaissance-level in the 1997-1998 survey should be recorded at the intensive-level and evaluated for eligibility to the State and National Register of Historic Places. Appendix C contains a complete listing of those properties recommended for further study. Third, a windshield survey should be conducted which notes all properties, not previously surveyed, in the county more than 50 years of age.

Preliminary Information Forms (PIF)

A Preliminary Information Form (PIF) is a tool used by the VDHR to determine if a property or district is eligible for listing on the State and National Register of Historic Places. The 1992-1993 project documented 250 properties at the reconnaissance-level in the towns of Lovington, Massies Mill, Norwood and Shipman. These 250 properties represent 100% of the structures fifty years and older in these towns. The towns of Lovington, Massies Mill, Norwood and Shipman should be researched, documented, and assessed in a Preliminary Information Form (PIF) for their potential as State and National Register historic districts.

APPENDIX A: VDHR TIME FRAMES

Prehistoric Native American Settlement	10,000 B.C. - 1600 A. D.
Settlement to Society	1600 - 1750
Colony to National	1750 - 1789
Early National Period	1789 - 1830
Antebellum Period	1830 - 1860
Civil War	1861 - 1865
Reconstruction & Growth	1865 - 1917
World War I to World War II	1917 - 1945
New Dominion	1945 to present

APPENDIX B: VDHR HISTORIC THEMES AND ASSOCIATED RESOURCES

Domestic Theme

This theme relates broadly to the human need for shelter, a home place, and community dwellings. Domestic property types include single-dwellings such as a rowhouse, mansion, residence, rock shelter, farmstead, or cave; multiple dwellings, such as a duplex, or apartment building; secondary domestic structures such as a dairy, smokehouse, storage pit, storage shed, kitchen, garage, or other dependency; hotels such as an inn, motel, or way station; institutional housing such as a military quarter, staff housing, poor house, or orphanage; camps such as a hunting campsite, fishing camp, forestry camp, seasonal residence, or temporary habitation site; and village sites.

Subsistence/Agriculture Theme

This theme most broadly seeks explanations of the different strategies that cultures develop to procure, process, and store food. Beyond the basic studies of site function based on the analysis of a site location, the tool types from the site, and the food remains recovered, this theme also explores the reconstruction of past habitats from the perspective of their potential for human exploitation, energy flow studies on the procurement and processing of food, and the evolution of particular subsistence strategies over time within and between neighboring regions. Agriculture specifically refers to the process and technology of cultivating the soil, producing crops, and raising livestock and plants. Property types for the subsistence/agriculture theme include resources related to food production such as prehistoric villages, small family farmsteads, large plantations with representative or important collections of farm and outbuildings, and other agricultural complexes such as agribusiness sites or resources associated with processing such as a meat or fruit packing plant, cannery, smokehouse, brewery, winery, or food processing site; storage facilities such as a granary, silo, wine cellar, storage site, or tobacco warehouse; agricultural fields such as a pasture, vineyard, orchard, wheat fields, complex of crop marks or stone alignments, terrace, or hedgerow; animal facilities such as a hunting and kill site, stockyard, barn, chicken coop, hunting corral, hunting run, or apiary; fishing facilities or sites such as a fish hatchery or fishing ground; horticultural facilities such as a greenhouse, plant observatory, or garden; agricultural outbuildings such as a barn, chicken house, corncrib, smokehouse, or tool shed; and irrigation facilities such as an irrigation system, canal, stone alignment, hedgerow, or check dam.

Government/Law/Political Theme

This theme relates primarily to activities related to politics and government and to the enactment and administration of laws by which a nation, state, or other political jurisdiction is governed. It embraces governmental systems, political activities, legal systems, important political/governmental events in history, and political leaders. This theme also explores the inter-relationships of contemporaneous cultures and group interactions within cultures from their political aspect. Anthropological research questions, most often focus on Native American life, treat the nature of the different levels of socio-political organization, kinship systems which contribute to social integration, and mechanisms of cultural interactions between societies. Property types representing this theme include public administrative and service buildings such as the Capitol and the Executive Mansion as well as a town/city hall, federal, state, or county court house, prison, jail, fire/police department or station, post office, or custom house; public works projects and other types of government buildings; and sites of important governmental events or places associated with governmental leaders. Examples of prehistoric sites frequently related to this theme include both camps and villages.

Funerary Theme

This theme concerns the investigation of grave sites for demographic data to study population composition, health, and mortality within prehistoric and historic societies. Property types include cemeteries such as a burying ground, burial site, or ossuary; graves and burials such as a burial cache, burial mound, or grave; and mortuaries such as a mortuary site, funeral home, cremation area, or crematorium.

Ethnicity/Immigration Theme

This theme explores the material manifestations of ethnic diversity and the movement and interaction of people of different ethnic heritages through time and space in Virginia. While all property types may be associated with this theme, properties that exemplify the ethos of immigrant or ethnic groups, the distinctive cultural traditions of peoples that have been transplanted to Virginia, or the dominant aspirations of an ethnic group are of particular interest. Also related to this theme are resources associated with persons of distinctive ethnic heritage who made a significant contribution to our history and culture in any field of human endeavor.

Settlement Patterns Theme

Studies related to this theme involve the analysis of different strategies for the utilization of an area in response to subsistence, demographic, socio-political, and religious aspects of a cultural system. Evaluations can take place on two different levels: (1) utilization of space within a settlement and (2) local/regional distribution of settlements as a result of environmental adaptations. This theme is also concerned with the investigation of unknown or little known regions as well as the establishment and earliest development of new settlements or communities. While these studies primarily explore the subsistence-induced aspects of settlement patterns, studies of house types, village and town plans, and regional distributions are also combined with an analysis of the social, political, and economic aspects of settlement. Property types reflect the entire range of buildings, structures, districts, objects, sites, and landscapes.

Architecture/Landscape Architecture/Community Planning Theme

This theme explores the design values and practical arts of planning, designing, arranging, constructing, and developing buildings, structures, landscapes, towns, and cities for human use and enjoyment. Property types include impermanent structures, rural vernacular buildings and structures, urban vernacular buildings and structures, great architectural landmarks, buildings exemplary of national styles, parks, gardens, and landscaped cemeteries, town and village plans, urban design and planned communities, and company towns.

Technology/Engineering Theme

While the technological aspects of a culture form the primary basis of interpretation of all themes, this theme relates primarily to the utilization of and evolutionary changes in material culture as a society adapts to its physical, biological, and cultural environments. Research questions here range from artifact studies on the identification of changing tool types, their various functions, and how they were manufactured to more general issues related to the organization of labor and presence/absence of craft or occupational specialization. All site types may contribute to the understanding of this theme. This theme also involves the practical application of scientific principles to design, construct, and operate equipment, machinery, and structures to serve human needs. Property types include wood, metal, and concrete bridges, highways, dams, canal, railroad, air-transportation, and other transportation-related works, and various industrial structures, engines, and machinery.

Recreation/Arts Theme

This theme relates to the arts and cultural activities and institutions associated with leisure time and recreation. It encompasses the activities related to the popular and academic arts including fine arts and the performing arts (painting, sculpture, dance, drama, music), literature, recreational gatherings, entertainment and leisure activity, and broad cultural movements. Property types include theaters such as cinema, movie palace, theater, playhouse; auditoriums such as a hall, lyceum, or other auditorium; museums such as an art museum, art gallery, or exhibition hall; music facilities such as a concert hall, opera house, bandstand, or dance hall; sports facilities such as a gymnasium, swimming pool, tennis court, playing field, or stadium; outdoor recreation facilities such as a park, campground, picnic area, biking trail, fair, amusement park, or county or state fairground; monuments/markers such as a commemorative marker or monument; various works of art such as sculpture, carving, statue, mural, or rock art; and places associated with writers, artists, and performers. Landscaped gardens, parks, and cemeteries are listed under the Architecture/Landscape Architecture/Community Planning Theme.

Transportation/Communication Theme

This theme relates to the process and technology of conveying passengers, materials, and information. Studies focus on transportation and communication networks involving roads, water, canals, railroads, and air as well as on the various structures, vehicles, equipment, and technology associated with each mode. Property types may be generally classified as either rail-related, air-related, water-related, road-related, or pedestrian-related. Examples include railroads, stations, engine houses, and trains; airports, airplanes, landing fields, and space vehicles; and research facilities associated with transportation systems; boats and other watercraft, piers, and wharves, ferries, lighthouses; canals and associated structures, locks, boats; roads and turnpikes, tollhouse, automobiles and other vehicles, and streetcars; and board walks, walkways, and trails.

Commerce/Trade Theme

This theme relates to the process of trading goods, services, and commodities. Property types include businesses, professionals, organizational, and financial institutions, and specialty stores. Specific property types related to the theme include office buildings, trading posts, stores, department stores, restaurants, warehouses, trade sites, market buildings, arcades, shopping centers, offices, office blocks, and banks.

Industry/Processing/Extraction Theme

This theme explores the technology and process of managing material, labor, and equipment to produce goods and services. Included in this theme are activities related to the extraction, production, and processing of materials such as quarrying, mining, manufacturing, lumbering, technology, electronics, pottery textiles, food processing, distilling, fuel, building materials, tools, transportation, seafood, and many other industries. Property types include quarries, mills (grist, carding, textile, woodworking), factories, distilleries, shipyards, mines, forges and furnaces, kilns, laboratories, power plants, dams, tanneries, village shops, and other small crafts and industrial sites.

Landscape Theme

This theme explores the historic, cultural, scenic, visual, and design qualities of cultural landscapes, emphasizing the reciprocal relationships affecting the natural and the human-built environment. Investigations include studies into spatial organization patterns, land use, response to natural features, circulation networks, boundaries, vegetation, cluster arrangement of buildings, fences, and paths, structures, and small-scale landscape elements. Associated property types include not only deliberately designed or maintained landscapes such as parking lots, parks, plazas, gardens, street furniture, and objects, conservation areas, and rural historic districts but also unoccupied land, underwater sites, and natural features such as a mountain, valley, promontory, tree, river, island, pond, or lake.

Health Care/Medicine Theme

This theme refers to the care of the sick, elderly, and the disabled, and the promotion of health and hygiene. Property types associated with this theme include hospitals such as a veterans medical center, mental hospital, asylum, private or public hospital, or medical research facility; clinics such as a dispensary or doctors office; sanitariums such as a nursing home, rest home, or other sanitarium; medical businesses/offices such as a pharmacy, medical supply store, or doctor or dentist office; and resorts such as a bath, spa or other resort facility.

Education Theme

This theme relates to the process of conveying or acquiring knowledge or skills through systematic instruction, training, or study, whether through public or private efforts. Property types include schools such as a field school, academy, one-room, two-room, or

consolidated school, secondary school, grammar school, or trade or technical school; colleges such as a university, college, community college, or junior college; libraries, research facilities such as a laboratory, observatory, or planetarium; and other education-related resources such as a college dormitory or housing at a boarding school.

Military/Defense Theme

This theme relates to the system of defending the territory and sovereignty of a people and encompasses all military activities, battles, strategic locations, and events important to military history. It includes property types related to arms production and storage such as a magazine, gun manufactory, or armory; fortifications such as a fortified military or naval post, palisaded village, fortified knoll or mountain top, battery, or bunker; military facilities such as a military post, supply depot, garrison fort, barrack, or military camp; battle sites such as a battlefield; coast guard facilities such as a lighthouse, coast guard station, pier, dock, or life-saving station; naval facilities such as a submarine, aircraft carrier, battleship, or naval base; and air facilities such as an aircraft, air base, or missile launching site.

Religion Theme

This theme concerns the organized system of beliefs, practices, and traditions regarding the world view of various cultures and the material manifestation of spiritual beliefs. For studies of Native American life, research questions also focus on the identification and evaluation of forms of religious leadership and how they vary over time and between societies. This theme also encompasses the study and understanding of places of worship, religious training and education, and administration of religious facilities. Property types include various places of worship such as a church, temple, synagogue, cathedral, meetinghouse, mound or sweat house; ceremonial sites such as a petroglyph or pictograph site, cave, shrine, or pilgrimage route; church schools such as a religious academy, school, or seminary; and church related residences such as a parsonage, monastery, hermitage, nunnery, convent, or rectory.

Social Theme

this theme relates to social activities and institutions, the activities of charitable, fraternal, or other community organizations and places associated with broad social movements. Property types include meeting halls such as a grange, union, Masonic, or temperance hall, and the halls of other fraternal, patriotic, or political organizations; community centers; clubhouses such as the facilities of a literary, social, or garden club; and civic facilities such as a civic or community center.

Other Theme

Any theme not covered by the above categories. The state preservation planning process is designed to accommodate various scales of inquiry and alternate ways of understanding our diverse cultural heritage. Studies underway related to Virginia's maritime heritage, Appalachian heritage, African-American heritage, studies of regions and themes that cross state boundaries, as well as more detailed analysis of historic contexts identified through the state and national register documentation are all likely to necessitate the addition of redefinition of these themes and related property types.

**APPENDIX C: PROPERTIES RECOMMENDED FOR SURVEY
AT THE INTENSIVE-LEVEL**

VDHR#	Property Name
062-5003	Fall, Johnny House
062-5005	Fox, Samuel House
062-5015	Dodd, Layman House
062-5016	Aylmer (Ewing House/White Oak)
062-5018	Glowknotnuss Hazel Shade (Hughes House)
062-5021	Crawford House
062-5023	Fortunes Cove, Upper House
062-5032	Nallysland (Monte Vista)
062-5033	Mountain View (Rock Spring Farm)
062-5034	Morris, John Farm (Wright Farm)
062-5036	Harris House
062-5037	Hill House and Cemetery
062-5044	Rocky Knob and Cemetery
062-5045	Goodwin Plantation
062-5047	Wills, James Land Grant
062-5049	Phillipi and Cemetery (Hazelwood)
062-5051	Sneed-Saunders House and Cemetery
062-5053	Fortunes Cove, Mansion and Cemetery
062-5056	Warwick Hall
062-5060	Betsy Taylor Tavern
062-5063	Wellington, House and Cemetery
062-5064	Hat Creek Farm
062-5067	Edgewood at East Branch
062-5069	Blue Rock, House and Cemetery
062-5072	Howard Allen Place (Cat Rock Mountain Farm)
062-5073	Carter, Thomas James, House and Store (Mountain View)
062-5077	Quarters, Goodwin Plantation

APPENDIX D: IPS GENERATED SURVEY REPORTS

Survey Index Page 1 - 3

Chronological Report: DHR ID # Order Page 1 - 2

Chronological Report: Date Order Page 1 - 2

Historic Context Report: DHR ID # Order Page 1 - 6

Historic Context Report: Date Order Page 1 - 6

Architectural Style Report: DHR ID # Order Page 1 - 3

Architectural Style Report: Date Order Page 1 - 3

SURVEY INDEX - ID#, NAME, USGS MAP

DHR FILE #	PROPERTY NAME	USGS QUAD MAP
062-5003	Fall House, Johnny	GREENFIELD
062-5004	Greenfield Page House	GREENFIELD
062-5005	Fox House, Samuel	GREENFIELD
062-5006	Avon Post Office Anderson's Grocery	GREENFIELD
062-5007	Onan Goodloe House, Benton Hart	GREENFIELD
062-5008	Woodley Farm Redland Farm	WAYNESBORO EAST
062-5009	Arisman House, Jacob	WAYNESBORO EAST
062-5010	Haven House, Bennie Critzler House, Christy	WAYNESBORO EAST
062-5011	Robinson House Hawthorne House, Preacher H. K.	WAYNESBORO EAST
062-5012	Beck-Jones House	WAYNESBORO EAST
062-5013	Goodloe Store Beech Spring Farm and Cemetery	GREENFIELD
062-5014	Campbell-Mays House Westover	MASSIES MILL
062-5015	Hudson-Mays House Dodd House, Layman	MASSIES MILL
062-5016	Aylmer Ewing House	HORSESHOE MOUNTAIN
062-5017	White Oak Dodd Cabin and Cemetery	SHERANDO
062-5018	Mansfield House, Robert Glowknotnuss Hazel Shade	SHERANDO
062-5019	Hughes House Valley Farm	GREENFIELD
062-5020	Coleman House, Emmett Rodes	GREENFIELD
062-5021	Elk Hill Baptist Church	SHERANDO
062-5022	Crawford House	SHERANDO
062-5023	Mt. Airy Church and Cemetery	LOVINGSTON
062-5024	Fortunes Cove, Upper House	HORSESHOE MOUNTAIN
062-5025	Roberts House	SCHUYLER
062-5026	Powell House	SCHUYLER
062-5027	Mt. Shiloh Baptist Church and Cemetery	SCHUYLER
062-5028	Cove Creek House Trinity	SCHUYLER
062-5029	Bowling Store	ARRINGTON
062-5030	Four Brothers Antiques	ARRINGTON
062-5031	Grant House	MONTEBELLO
062-5032	Coffey House	BIG LEVELS
062-5033	Edgewood	SCHUYLER
062-5034	Nallysland	SCHUYLER
062-5035	Monte Vista	SCHUYLER
062-5036	Mountain View	LOVINGSTON
062-5037	Rock Spring Farm	LOVINGSTON
062-5038	Morris Farm, John	HORSESHOE MOUNTAIN
062-5039	Wright Farm	HORSESHOE MOUNTAIN
062-5040	Log House, Fork Mountain	LOVINGSTON
062-5041	Harris House	LOVINGSTON

SURVEY INDEX - ID#, NAME, USGS MAP

DHR FILE #	PROPERTY NAME	USGS QUAD MAP
062-5037	Hill House and Cemetery	LOVINGSTON
062-5038	Roberts - Smith House and Cemetery	LOVINGSTON
062-5039	Meander Inn	LOVINGSTON
062-5040	Jonesboro Baptist Church	HORSESHOE MOUNTAIN
062-5041	Grape Lawn	LOVINGSTON
062-5042	Nodei	ARRINGTON
062-5043	Stevens Store, Emmett	ARRINGTON
062-5044	Rocky Knob and Cemetery	ARRINGTON
062-5045	Goodwin Plantation	ARRINGTON
062-5046	Nelmonte	ARRINGTON
062-5047	Wills House, James, and Land Grant	HORSESHOE MOUNTAIN
062-5048	New Mount Church and Cemetery	ARRINGTON
062-5049	Phillipi and Cemetery Hazelwood	ARRINGTON
062-5050	Arrington-Horsley House	ARRINGTON
062-5051	Sneed-Saunders House and Cemetery	ARRINGTON
062-5052	Chestnut Oak	ARRINGTON
062-5053	Fortunes Cove, Mansion and Cemetery	HORSESHOE MOUNTAIN
062-5054	Cherry Hill	ARRINGTON
062-5055	Bailey House, William Henry	BUFFALO RIDGE
062-5056	Warwick Hall	SHIPMAN
062-5057	Rose Hill and Cemetery	GLADSTONE
062-5058	Gladstone Depot	GLADSTONE
062-5059	Gladstone Memorial Baptist Church	GLADSTONE
062-5060	Taylor Tavern, Betsy Brent House	HORSESHOE MOUNTAIN
062-5061	Whitehead House, Caid Upper Willowbrook	HORSESHOE MOUNTAIN
062-5062	Embly, House and Cemetery Garland Narrow Gate Farm	PINEY RIVER
062-5063	Wellington, House and Cemetery	HORSESHOE MOUNTAIN
062-5064	Hat Creek Farm	HORSESHOE MOUNTAIN
062-5065	Bryant House	HORSESHOE MOUNTAIN
062-5066	Harvey-Bryant House Copeland	HORSESHOE MOUNTAIN
062-5067	Edgewood at East Branch	HORSESHOE MOUNTAIN
062-5068	Overseer's Cottage Gantt-Redd House	HORSESHOE MOUNTAIN
062-5069	Blue Rock, House and Cemetery	HORSESHOE MOUNTAIN
062-5070	East Branch Estate East Branch Farm	HORSESHOE MOUNTAIN
062-5071	Methodist Episcopal Church and Cemetery Bethlehem United Methodist Church	HORSESHOE MOUNTAIN
062-5072	Allen House, Howard Cat Rock Mountain Farm	HORSESHOE MOUNTAIN
062-5073	Carter, House and Store, Thomas James Mountain View	HORSESHOE MOUNTAIN
062-5074	Old Fleetwood School White House, Gladys	HORSESHOE MOUNTAIN
062-5075	Dodd House Corlett House, Esmee	ARRINGTON

SURVEY INDEX - ID#, NAME, USGS MAP

DHR FILE #	PROPERTY NAME	USGS QUAD MAP
062-5076	Haven House and Garage, George "Harold"	WAYNESBORO EAST
062-5077	Quarters, Goodwin Plantation	ARRINGTON

- 75 RECORDS IN THIS REPORT

CHRONOLOGICAL REPORT

DHR ID #	YEAR	PROPERTY NAME
062-5003	1800	ca Fall House, Johnny
062-5004	1887	Greenfield Page House
062-5005	1800	ca Fox House, Samuel
062-5006	1900	ca Avon Post Office Anderson's Grocery
062-5007	1860	ca Onan Goodloe House, Benton Hart Woodley Farm
062-5008	1800	ca Redland Farm Arisman House, Jacob
062-5009	1870	ca Haven House, Bennie
062-5010	1900	ca Critzer House, Christy Robinson House
062-5011	1860	ca Hawthorne House, Preacher H. K. Beck-Jones House
062-5012	1893	ca Goodloe Store
062-5013	1870	ca Beech Spring Farm and Cemetery Campbell-Mays House
062-5014	1880	ca Westover Hudson-Mays House
062-5015	1823	ca Dodd House, Layman
062-5016	1780	ca Aylmer Ewing House White Oak
062-5017	1830	ca Dodd Cabin and Cemetery Mansfield House, Robert
062-5018	1800	ca Glowknotnuss Hazel Shade Hughes House
062-5019	1913	ca Valley Farm Coleman House, Emmett Rodes
062-5020	1920	ca Elk Hill Baptist Church
062-5021	1820	ca Crawford House
062-5022	1910	ca Mt. Airy Church and Cemetery
062-5023	1820	ca Fortunes Cove, Upper House
062-5024	1900	ca Roberts House
062-5025	1860	ca Powell House
062-5026	1870	Mt. Shiloh Baptist Church and Cemetery
062-5027	1820	ca Cove Creek House Trinity
062-5028	1838	ca Bowling Store Four Brothers Antiques
062-5029	1920	Grant House
062-5030	1910	Coffey House
062-5031	1902	Edgewood
062-5032	1820	ca Nallysland Monte Vista
062-5033	1800	ca Mountain View Rock Spring Farm
062-5034	1870	ca Morris Farm, John Wright Farm
062-5035	1900	ca Log House, Fork Mountain
062-5036	1770	Harris House
062-5037	1800	ca Hill House and Cemetery

CHRONOLOGICAL REPORT

DHR ID #	YEAR	PROPERTY NAME
062-5038	1800	ca Roberts - Smith House and Cemetery
062-5039	1913	Meander Inn
062-5040	1912	Jonesboro Baptist Church
062-5041	1910	Grape Lawn
062-5042	1899	Nodei
062-5043	1902	Stevens Store, Emmett
062-5044	1765	ca Rocky Knob and Cemetery
062-5045	1835	Goodwin Plantation
062-5046	1917	Nelmonte
062-5047	1785	ca Wills House, James, and Land Grant
062-5048	1885	New Mount Church and Cemetery
062-5049	1830	ca Phillipi and Cemetery Hazelwood
062-5050	1901	Arrington-Horsley House
062-5051	1790	ca Sneed-Saunders House and Cemetery
062-5052	1925	ca Chestnut Oak
062-5053	1804	ca Fortunes Cove, Mansion and Cemetery
062-5054	1775	ca Cherry Hill
062-5055	1906	Bailey House, William Henry
062-5056	1800	ca Warwick Hall
062-5057	1800	ca Rose Hill and Cemetery
062-5058	1889	ca Gladstone Depot
062-5059	1892	Gladstone Memorial Baptist Church
062-5060	1780	ca Taylor Tavern, Betsy Brent House
062-5061	1910	Whitehead House, Caid Upper Willowbrook
062-5062	1840	ca Embly, House and Cemetery Garland Narrow Gate Farm
062-5063	1826	Wellington, House and Cemetery
062-5064	1830	ca Hat Creek Farm
062-5065	1895	Bryant House
062-5066	1890	ca Harvey-Bryant House Copeland
062-5067	1800	ca Edgewood at East Branch
062-5068	1830	Overseer's Cottage Gantt-Redd House
062-5069	1880	ca Blue Rock, House and Cemetery
062-5070	1891	East Branch Estate East Branch Farm
062-5071	1923	Methodist Episcopal Church and Cemetery Bethlehem United Methodist Church
062-5072	1800	ca Allen House, Howard Cat Rock Mountain Farm
062-5073	1903	Carter, House and Store, Thomas James Mountain View
062-5074	1907	Old Fleetwood School White House, Gladys
062-5075	1890	Dodd House Corlett House, Esmee
062-5076	1870	ca Haven House and Garage, George "Harold"
062-5077	1835	Quarters, Goodwin Plantation

CHRONOLOGICAL REPORT

DHR ID #	YEAR	PROPERTY NAME
062-5044	1765	ca Rocky Knob and Cemetery
062-5036	1770	Harris House
062-5054	1775	ca Cherry Hill
062-5016	1780	ca Aylmer Ewing House White Oak
062-5060	1780	ca Taylor Tavern, Betsy Brent House
062-5047	1785	ca Wills House, James, and Land Grant
062-5051	1790	ca Sneed-Saunders House and Cemetery
062-5072	1800	ca Allen House, Howard Cat Rock Mountain Farm
062-5067	1800	ca Edgewood at East Branch
062-5003	1800	ca Fall House, Johnny
062-5005	1800	ca Fox House, Samuel
062-5018	1800	ca Glowknotnuss Hazel Shade Hughes House
062-5037	1800	ca Hill House and Cemetery
062-5033	1800	ca Mountain View Rock Spring Farm
062-5008	1800	ca Redland Farm Arisman House, Jacob
062-5038	1800	ca Roberts - Smith House and Cemetery
062-5057	1800	ca Rose Hill and Cemetery
062-5056	1800	ca Warwick Hall
062-5053	1804	ca Fortunes Cove, Mansion and Cemetery
062-5027	1820	ca Cove Creek House Trinity
062-5021	1820	ca Crawford House
062-5023	1820	ca Fortunes Cove, Upper House
062-5032	1820	ca Nallysland Monte Vista
062-5015	1823	ca Dodd House, Layman
062-5063	1826	Wellington, House and Cemetery
062-5017	1830	ca Dodd Cabin and Cemetery Mansfield House, Robert
062-5064	1830	ca Hat Creek Farm
062-5068	1830	Overseer's Cottage Gantt-Redd House
062-5049	1830	ca Phillipi and Cemetery Hazelwood
062-5045	1835	Goodwin Plantation
062-5077	1835	Quarters, Goodwin Plantation
062-5028	1838	ca Bowling Store Four Brothers Antiques
062-5062	1840	ca Embly, House and Cemetery Garland Narrow Gate Farm
062-5011	1860	ca Hawthorne House, Preacher H. K. Beck-Jones House
062-5007	1860	ca Onan Goodloe House, Benton Hart Woodley Farm
062-5025	1860	ca Powell House

CHRONOLOGICAL REPORT

DHR ID #	YEAR	PROPERTY NAME
062-5013	1870	ca Beech Spring Farm and Cemetery Campbell-Mays House
062-5076	1870	ca Haven House and Garage, George "Harold"
062-5009	1870	ca Haven House, Bennie
062-5034	1870	ca Morris Farm, John Wright Farm
062-5026	1870	Mt. Shiloh Baptist Church and Cemetery
062-5069	1880	ca Blue Rock, House and Cemetery
062-5014	1880	ca Westover Hudson-Mays House
062-5048	1885	New Mount Church and Cemetery
062-5004	1887	Greenfield Page House
062-5058	1889	ca Gladstone Depot
062-5075	1890	Dodd House Corlett House, Esmee
062-5066	1890	ca Harvey-Bryant House Copeland
062-5070	1891	East Branch Estate East Branch Farm
062-5059	1892	Gladstone Memorial Baptist Church
062-5012	1893	ca Goodloe Store
062-5065	1895	Bryant House
062-5042	1899	Nodei
062-5006	1900	ca Avon Post Office Anderson's Grocery
062-5010	1900	ca Critzer House, Christy Robinson House
062-5035	1900	ca Log House, Fork Mountain
062-5024	1900	ca Roberts House
062-5050	1901	Arrington-Horsley House
062-5031	1902	Edgewood
062-5043	1902	Stevens Store, Emmett
062-5073	1903	Carter, House and Store, Thomas James Mountain View
062-5055	1906	Bailey House, William Henry
062-5074	1907	Old Fleetwood School White House, Gladys
062-5030	1910	Coffey House
062-5041	1910	Grape Lawn
062-5022	1910	ca Mt. Airy Church and Cemetery
062-5061	1910	Whitehead House, Caid Upper Willowbrook
062-5040	1912	Jonesboro Baptist Church
062-5039	1913	Meander Inn
062-5019	1913	ca Valley Farm Coleman House, Emmett Rodes
062-5046	1917	Nelmonte
062-5020	1920	ca Elk Hill Baptist Church
062-5029	1920	Grant House
062-5071	1923	Methodist Episcopal Church and Cemetery Bethlehem United Methodist Church
062-5052	1925	ca Chestnut Oak

HISTORIC CONTEXT REPORT

DHR ID #	YEAR	PROPERTY NAME	DHR HISTORIC CONTEXT
062-5003	1800	ca Fall House, Johnny	Architecture/Community Planning Domestic
062-5004	1887	Greenfield Page House	Subsistence/Agriculture Architecture/Community Planning Domestic
062-5005	1800	ca Fox House, Samuel	Subsistence/Agriculture Architecture/Community Planning Domestic
062-5006	1900	ca Avon Post Office Anderson's Grocery	Subsistence/Agriculture Architecture/Community Planning Commerce/Trade
062-5007	1860	ca Onan Goodloe House, Benton Hart	Government/Law/Political Architecture/Community Planning Domestic
062-5008	1800	ca Woodley Farm Redland Farm Arisman House, Jacob	Subsistence/Agriculture Architecture/Community Planning Domestic
062-5009	1870	ca Haven House, Bennie	Ethnicity/Immigration Subsistence/Agriculture Architecture/Community Planning Commerce/Trade
062-5010	1900	ca Critzer House, Christy Robinson House	Domestic Architecture/Community Planning
062-5011	1860	ca Hawthorne House, Preacher H. K. Beck-Jones House	Domestic Architecture/Community Planning Domestic
062-5012	1893	ca Goodloe Store	Subsistence/Agriculture Architecture/Community Planning Commerce/Trade
062-5013	1870	ca Beech Spring Farm and Cemetery Campbell-Mays House	Architecture/Community Planning Domestic Education Funerary
062-5014	1880	ca Westover Hudson-Mays House	Subsistence/Agriculture Architecture/Community Planning Domestic
062-5015	1823	ca Dodd House, Layman	Subsistence/Agriculture Architecture/Community Planning Domestic
062-5016	1780	ca Aylmer	Subsistence/Agriculture Architecture/Community

HISTORIC CONTEXT REPORT

DHR ID #	YEAR	PROPERTY NAME	DHR HISTORIC CONTEXT
		Ewing House White Oak	Planning Domestic
062-5017	1830	ca Dodd Cabin and Cemetery Mansfield House, Robert	Subsistence/Agriculture Architecture/Community Planning Domestic Funerary
062-5018	1800	ca Glowknotnuss Hazel Shade Hughes House	Subsistence/Agriculture Architecture/Community Planning Domestic
062-5019	1913	ca Valley Farm Coleman House, Emmett Rodes	Subsistence/Agriculture Architecture/Community Planning Domestic
062-5020	1920	ca Elk Hill Baptist Church	Architecture/Community Planning Religion
062-5021	1820	ca Crawford House	Architecture/Community Planning Domestic
062-5022	1910	ca Mt. Airy Church and Cemetery	Subsistence/Agriculture Architecture/Community Planning Ethnicity/Immigration Funerary Religion
062-5023	1820	ca Fortunes Cove, Upper House	Architecture/Community Planning Domestic
062-5024	1900	ca Roberts House	Subsistence/Agriculture Architecture/Community Planning Domestic
062-5025	1860	ca Powell House	Architecture/Community Planning Domestic
062-5026	1870	Mt. Shiloh Baptist Church and Cemetery	Architecture/Community Planning Funerary Religion
062-5027	1820	ca Cove Creek House Trinity	Architecture/Community Planning Domestic
062-5028	1838	ca Bowling Store Four Brothers Antiques	Architecture/Community Planning Commerce/Trade
062-5029	1920	Grant House	Architecture/Community Planning Domestic
062-5030	1910	Coffey House	Architecture/Community Planning Domestic Industry/Processing/Extraction

HISTORIC CONTEXT REPORT

DHR ID #	YEAR	PROPERTY NAME	DHR HISTORIC CONTEXT
062-5031	1902	Edgewood	Architecture/Community Planning Domestic
062-5032	1820	ca Nallysland Monte Vista	Subsistence/Agriculture Architecture/Community Planning Domestic
062-5033	1800	ca Mountain View Rock Spring Farm	Ethnicity/Immigration Subsistence/Agriculture Architecture/Community Planning Domestic
062-5034	1870	ca Morris Farm, John Wright Farm	Subsistence/Agriculture Architecture/Community Planning Domestic
062-5035	1900	ca Log House, Fork Mountain	Education Ethnicity/Immigration Subsistence/Agriculture Architecture/Community Planning Domestic
062-5036	1770	Harris House	Subsistence/Agriculture Architecture/Community Planning Domestic
062-5037	1800	ca Hill House and Cemetery	Subsistence/Agriculture Architecture/Community Planning Domestic
062-5038	1800	ca Roberts - Smith House and Cemetery	Funerary Subsistence/Agriculture Architecture/Community Planning Domestic
062-5039	1913	Meander Inn	Funerary Subsistence/Agriculture Architecture/Community Planning Domestic
062-5040	1912	Jonesboro Baptist Church	Subsistence/Agriculture Architecture/Community Planning Religion
062-5041	1910	Grape Lawn	Architecture/Community Planning Domestic
062-5042	1899	Nodei	Subsistence/Agriculture Architecture/Community Planning Domestic
062-5043	1902	Stevens Store, Emmett	Subsistence/Agriculture Architecture/Community Planning

HISTORIC CONTEXT REPORT

DHR ID #	YEAR	PROPERTY NAME	DHR HISTORIC CONTEXT
062-5044	1765	ca Rocky Knob and Cemetery	Commerce/Trade Architecture/Community Planning Domestic Funerary
062-5045	1835	Goodwin Plantation	Subsistence/Agriculture Architecture/Community Planning Domestic
062-5046	1917	Nelmonte	Subsistence/Agriculture Architecture/Community Planning Domestic
062-5047	1785	ca Wills House, James, and Land Grant	Architecture/Community Planning Domestic
062-5048	1885	New Mount Church and Cemetery	Subsistence/Agriculture Architecture/Community Planning Ethnicity/Immigration Funerary Religion
062-5049	1830	ca Phillipi and Cemetery Hazelwood	Architecture/Community Planning Domestic Funerary
062-5050	1901	Arrington-Horsley House	Subsistence/Agriculture Architecture/Community Planning Domestic
062-5051	1790	ca Sneed-Saunders House and Cemetery	Architecture/Community Planning Domestic Ethnicity/Immigration Funerary
062-5052	1925	ca Chestnut Oak	Subsistence/Agriculture Architecture/Community Planning Domestic
062-5053	1804	ca Fortunes Cove, Mansion and Cemetery	Subsistence/Agriculture Architecture/Community Planning Domestic Funerary
062-5054	1775	ca Cherry Hill	Subsistence/Agriculture Architecture/Community Planning Domestic Ethnicity/Immigration
062-5055	1906	Bailey House, William Henry	Subsistence/Agriculture Architecture/Community Planning Commerce/Trade Domestic

HISTORIC CONTEXT REPORT

DHR ID #	YEAR	PROPERTY NAME	DHR HISTORIC CONTEXT
062-5056	1800	ca Warwick Hall	Architecture/Community Planning Domestic
062-5057	1800	ca Rose Hill and Cemetery	Subsistence/Agriculture Architecture/Community Planning Domestic
062-5058	1889	ca Gladstone Depot	Funerary Subsistence/Agriculture Architecture/Community Planning
062-5059	1892	Gladstone Memorial Baptist Church	Transportation/Communication Architecture/Community Planning
062-5060	1780	ca Taylor Tavern, Betsy Brent House	Religion Architecture/Community Planning
062-5061	1910	Whitehead House, Caid Upper Willowbrook	Commerce/Trade Domestic Architecture/Community Planning
062-5062	1840	ca Embly, House and Cemetery Garland Narrow Gate Farm	Commerce/Trade Domestic Government/Law/Political Architecture/Community Planning
062-5063	1826	Wellington, House and Cemetery	Domestic Funerary Subsistence/Agriculture Architecture/Community Planning
062-5064	1830	ca Hat Creek Farm	Domestic Ethnicity/Immigration Subsistence/Agriculture Architecture/Community Planning
062-5065	1895	Bryant House	Domestic Subsistence/Agriculture Architecture/Community Planning
062-5066	1890	ca Harvey-Bryant House Copeland	Domestic Subsistence/Agriculture Architecture/Community Planning
062-5067	1800	ca Edgewood at East Branch	Domestic Subsistence/Agriculture Architecture/Community Planning
062-5068	1830	Overseer's Cottage Gantt-Redd House	Domestic Subsistence/Agriculture Architecture/Community Planning

HISTORIC CONTEXT REPORT

DHR ID #	YEAR	PROPERTY NAME	DHR HISTORIC CONTEXT
062-5069	1880	ca Blue Rock, House and Cemetery	Subsistence/Agriculture Architecture/Community Planning Domestic Funerary Health Care/Medicine
062-5070	1891	East Branch Estate East Branch Farm	Subsistence/Agriculture Architecture/Community Planning Domestic
062-5071	1923	Methodist Episcopal Church and Cemetery Bethlehem United Methodist Church	Architecture/Community Planning Funerary Religion
062-5072	1800	ca Allen House, Howard Cat Rock Mountain Farm	Architecture/Community Planning Commerce/Trade Domestic
062-5073	1903	Carter, House and Store, Thomas James Mountain View	Architecture/Community Planning Commerce/Trade Domestic
062-5074	1907	Old Fleetwood School White House, Gladys	Architecture/Community Planning Domestic Education
062-5075	1890	Dodd House Corlett House, Esmee	Architecture/Community Planning Domestic Subsistence/Agriculture
062-5076	1870	ca Haven House and Garage, George "Harold"	Architecture/Community Planning Commerce/Trade Domestic
062-5077	1835	Quarters, Goodwin Plantation	Architecture/Community Planning Domestic Ethnicity/Immigration Subsistence/Agriculture

75 RECORDS IN THIS REPORT

HISTORIC CONTEXT REPORT

DHR ID #	YEAR	PROPERTY NAME	DHR HISTORIC CONTEXT
062-5044	1765	ca Rocky Knob and Cemetery	Architecture/Community Planning Domestic Funerary
062-5036	1770	Harris House	Subsistence/Agriculture Architecture/Community Planning Domestic
062-5054	1775	ca Cherry Hill	Subsistence/Agriculture Architecture/Community Planning Domestic
062-5016	1780	ca Aylmer Ewing House White Oak	Ethnicity/Immigration Subsistence/Agriculture Architecture/Community Planning Domestic
062-5060	1780	ca Taylor Tavern, Betsy Brent House	Subsistence/Agriculture Architecture/Community Planning Commerce/Trade Domestic
062-5047	1785	ca Wills House, James, and Land Grant	Architecture/Community Planning Domestic
062-5051	1790	ca Sneed-Saunders House and Cemetery	Subsistence/Agriculture Architecture/Community Planning Domestic Ethnicity/Immigration Funerary
062-5072	1800	ca Allen House, Howard Cat Rock Mountain Farm	Subsistence/Agriculture Architecture/Community Planning Commerce/Trade Domestic
062-5067	1800	ca Edgewood at East Branch	Architecture/Community Planning Domestic
062-5003	1800	ca Fall House, Johnny	Subsistence/Agriculture Architecture/Community Planning Domestic
062-5005	1800	ca Fox House, Samuel	Subsistence/Agriculture Architecture/Community Planning Domestic
062-5018	1800	ca Glowknotnuss Hazel Shade Hughes House	Subsistence/Agriculture Architecture/Community Planning Domestic
062-5037	1800	ca Hill House and Cemetery	Subsistence/Agriculture Architecture/Community Planning

HISTORIC CONTEXT REPORT

DHR ID #	YEAR	PROPERTY NAME	DHR HISTORIC CONTEXT
062-5033	1800	ca Mountain View Rock Spring Farm	Domestic Funerary Subsistence/Agriculture Architecture/Community Planning
062-5008	1800	ca Redland Farm Arisman House, Jacob	Domestic Subsistence/Agriculture Architecture/Community Planning
062-5038	1800	ca Roberts - Smith House and Cemetery	Domestic Ethnicity/Immigration Subsistence/Agriculture Architecture/Community Planning
062-5057	1800	ca Rose Hill and Cemetery	Domestic Funerary Subsistence/Agriculture Architecture/Community Planning
062-5056	1800	ca Warwick Hall	Domestic Subsistence/Agriculture Architecture/Community Planning
062-5053	1804	ca Fortunes Cove, Mansion and Cemetery	Domestic Subsistence/Agriculture Architecture/Community Planning
062-5027	1820	ca Cove Creek House Trinity	Domestic Funerary Subsistence/Agriculture Architecture/Community Planning
062-5021	1820	ca Crawford House	Domestic Architecture/Community Planning
062-5023	1820	ca Fortunes Cove, Upper House	Domestic Subsistence/Agriculture Architecture/Community Planning
062-5032	1820	ca Nallysland Monte Vista	Domestic Subsistence/Agriculture Architecture/Community Planning
062-5015	1823	ca Dodd House, Layman	Domestic Ethnicity/Immigration Subsistence/Agriculture Architecture/Community Planning
062-5063	1826	Wellington, House and Cemetery	Domestic Subsistence/Agriculture Architecture/Community Planning

HISTORIC CONTEXT REPORT

DHR ID #	YEAR	PROPERTY NAME	DHR HISTORIC CONTEXT
062-5017	1830	ca Dodd Cabin and Cemetery Mansfield House, Robert	Funerary Subsistence/Agriculture Architecture/Community Planning Domestic
062-5064	1830	ca Hat Creek Farm	Funerary Subsistence/Agriculture Architecture/Community Planning Domestic
062-5068	1830	Overseer's Cottage Gantt-Redd House	Ethnicity/Immigration Subsistence/Agriculture Architecture/Community Planning Domestic
062-5049	1830	ca Phillipi and Cemetery Hazelwood	Subsistence/Agriculture Architecture/Community Planning Domestic
062-5045	1835	Goodwin Plantation	Funerary Subsistence/Agriculture Architecture/Community Planning Domestic
062-5077	1835	Quarters, Goodwin Plantation	Subsistence/Agriculture Architecture/Community Planning Domestic
062-5028	1838	ca Bowling Store Four Brothers Antiques	Ethnicity/Immigration Subsistence/Agriculture Architecture/Community Planning Commerce/Trade
062-5062	1840	ca Embly, House and Cemetery Garland Narrow Gate Farm	Architecture/Community Planning Domestic
062-5011	1860	ca Hawthorne House, Preacher H. K. Beck-Jones House	Funerary Subsistence/Agriculture Architecture/Community Planning Domestic
062-5007	1860	ca Onan Goodloe House, Benton Hart	Subsistence/Agriculture Architecture/Community Planning Domestic
062-5025	1860	ca Woodley Farm Powell House	Subsistence/Agriculture Architecture/Community Planning Domestic
062-5013	1870	ca Beech Spring Farm and Cemetery Campbell-Mays House	Architecture/Community Planning Domestic Education Funerary

HISTORIC CONTEXT REPORT

DHR ID #	YEAR	PROPERTY NAME	DHR HISTORIC CONTEXT
062-5076	1870	ca Haven House and Garage, George "Harold"	Subsistence/Agriculture Architecture/Community Planning Commerce/Trade Domestic
062-5009	1870	ca Haven House, Bennie	Architecture/Community Planning Commerce/Trade Domestic
062-5034	1870	ca Morris Farm, John Wright Farm	Architecture/Community Planning Domestic Education Ethnicity/Immigration
062-5026	1870	Mt. Shiloh Baptist Church and Cemetery	Subsistence/Agriculture Architecture/Community Planning Funerary Religion
062-5069	1880	ca Blue Rock, House and Cemetery	Architecture/Community Planning Domestic Funerary Health Care/Medicine
062-5014	1880	ca Westover Hudson-Mays House	Subsistence/Agriculture Architecture/Community Planning Domestic
062-5048	1885	New Mount Church and Cemetery	Subsistence/Agriculture Architecture/Community Planning Ethnicity/Immigration Funerary Religion
062-5004	1887	Greenfield Page House	Architecture/Community Planning Domestic
062-5058	1889	ca Gladstone Depot	Subsistence/Agriculture Architecture/Community Planning Transportation/Communication
062-5075	1890	Dodd House Corlett House, Esmee	Architecture/Community Planning Domestic
062-5066	1890	ca Harvey-Bryant House Copeland	Subsistence/Agriculture Architecture/Community Planning Domestic
062-5070	1891	East Branch Estate East Branch Farm	Subsistence/Agriculture Architecture/Community Planning Domestic
062-5059	1892	Gladstone Memorial	Subsistence/Agriculture Architecture/Community

HISTORIC CONTEXT REPORT

DHR ID #	YEAR	PROPERTY NAME	DHR HISTORIC CONTEXT
		Baptist Church	Planning Religion
062-5012	1893	ca Goodloe Store	Architecture/Community Planning Commerce/Trade
062-5065	1895	Bryant House	Architecture/Community Planning Domestic
062-5042	1899	Nodei	Subsistence/Agriculture Architecture/Community Planning Domestic
062-5006	1900	ca Avon Post Office Anderson's Grocery	Subsistence/Agriculture Architecture/Community Planning Commerce/Trade
062-5010	1900	ca Critzer House, Christy Robinson House	Government/Law/Political Architecture/Community Planning Domestic
062-5035	1900	ca Log House, Fork Mountain	Architecture/Community Planning Domestic
062-5024	1900	ca Roberts House	Subsistence/Agriculture Architecture/Community Planning Domestic
062-5050	1901	Arrington-Horsley House	Architecture/Community Planning Domestic
062-5031	1902	Edgewood	Architecture/Community Planning Domestic
062-5043	1902	Stevens Store, Emmett	Subsistence/Agriculture Architecture/Community Planning Commerce/Trade
062-5073	1903	Carter, House and Store, Thomas James Mountain View	Architecture/Community Planning Commerce/Trade Domestic
062-5055	1906	Bailey House, William Henry	Architecture/Community Planning Commerce/Trade Domestic
062-5074	1907	Old Fleetwood School White House, Gladys	Architecture/Community Planning Domestic
062-5030	1910	Coffey House	Education Architecture/Community Planning Domestic
062-5041	1910	Grape Lawn	Industry/Processing/Extraction Architecture/Community

HISTORIC CONTEXT REPORT

DHR ID #	YEAR	PROPERTY NAME	DHR HISTORIC CONTEXT
			Planning
			Domestic
062-5022	1910	ca Mt. Airy Church and Cemetery	Subsistence/Agriculture Architecture/Community Planning
			Ethnicity/Immigration Funerary
062-5061	1910	Whitehead House, Caid Upper Willowbrook	Religion Architecture/Community Planning
			Commerce/Trade Domestic
062-5040	1912	Jonesboro Baptist Church	Government/Law/Political Architecture/Community Planning
			Religion
062-5039	1913	Meander Inn	Architecture/Community Planning
			Domestic
062-5019	1913	ca Valley Farm Coleman House, Emmett Rodes	Subsistence/Agriculture Architecture/Community Planning
			Domestic
062-5046	1917	Nelmonte	Architecture/Community Planning
			Domestic
062-5020	1920	ca Elk Hill Baptist Church	Architecture/Community Planning
			Religion
062-5029	1920	Grant House	Architecture/Community Planning
			Domestic
062-5071	1923	Methodist Episcopal Church and Cemetery	Architecture/Community Planning
		Bethlehem United Methodist Church	Funerary
			Religion
062-5052	1925	ca Chestnut Oak	Architecture/Community Planning
			Domestic
			Subsistence/Agriculture

75 RECORDS IN THIS REPORT

ARCHITECTURAL STYLE REPORT

DHR ID #	PROPERTY NAME	YEAR	ARCHITECTURAL STYLE
062-5003	Fall House, Johnny	1800	ca Georgian
062-5004	Greenfield Page House	1887	Colonial Revival
062-5005	Fox House, Samuel	1800	ca Early Republic
062-5006	Avon Post Office Anderson's Grocery	1900	ca Late 19th and Early 20th Century American Movements
062-5007	Onan Goodloe House, Benton Hart Woodley Farm	1860	ca Italianate
062-5008	Redland Farm	1800	ca Federal
062-5009	Arisman House, Jacob	1870	ca Colonial Revival
062-5010	Haven House, Bennie Critzler House, Christy Robinson House	1900	ca Late 19th and Early 20th Century American Movements
062-5011	Hawthorne House, Preacher H. K. Beck-Jones House	1860	ca Greek Revival
062-5012	Goodloe Store	1893	ca Late 19th and Early 20th Century American Movements
062-5013	Beech Spring Farm and Cemetery Campbell-Mays House	1870	ca Late Victorian
062-5014	Westover Hudson-Mays House	1880	ca Mid 19th Century
062-5015	Dodd House, Layman	1823	ca Early Republic
062-5016	Aylmer Ewing House White Oak	1780	ca Early Republic
062-5017	Dodd Cabin and Cemetery Mansfield House, Robert	1830	ca Mid 19th Century
062-5018	Glowknotnuss Hazel Shade Hughes House	1800	ca Early Republic
062-5019	Valley Farm Coleman House, Emmett Rodes	1913	ca Queen Anne
062-5020	Elk Hill Baptist Church	1920	ca Gothic Revival
062-5021	Crawford House	1820	ca Federal
062-5022	Mt. Airy Church and Cemetery	1910	ca Late 19th and Early 20th Century American Movements
062-5023	Fortunes Cove, Upper House	1820	ca Greek Revival
062-5024	Roberts House	1900	ca Colonial Revival
062-5025	Powell House	1860	ca Gothic Revival
062-5026	Mt. Shiloh Baptist Church and Cemetery	1870	Gothic Revival
062-5027	Cove Creek House Trinity	1820	ca Federal
062-5028	Bowling Store Four Brothers Antiques	1838	ca Mid 19th Century
062-5029	Grant House	1920	Colonial Revival
062-5030	Coffey House	1910	Late 19th and Early 20th Century American Movements

ARCHITECTURAL STYLE REPORT

DHR ID #	PROPERTY NAME	YEAR	ARCHITECTURAL STYLE
062-5031	Edgewood	1902	Queen Anne
062-5032	Nallysland Monte Vista	1820	ca Greek Revival
062-5033	Mountain View	1800	ca Greek Revival
062-5034	Rock Spring Farm Morris Farm, John Wright Farm	1870	ca Late 19th and 20th Century Revivals
062-5035	Log House, Fork Mountain	1900	ca Late 19th and Early 20th Century American Movements
062-5036	Harris House	1770	Georgian
062-5037	Hill House and Cemetery	1800	ca Early Classical Revival
062-5038	Roberts - Smith House and Cemetery	1800	ca Federal
062-5039	Meander Inn	1913	Colonial Revival
062-5040	Jonesboro Baptist Church	1912	Gothic Revival
062-5041	Grape Lawn	1910	Colonial Revival
062-5042	Nodei	1899	Colonial Revival
062-5043	Stevens Store, Emmett	1902	Late 19th and Early 20th Century American Movements
062-5044	Rocky Knob and Cemetery	1765	ca Colonial
062-5045	Goodwin Plantation	1835	Federal
062-5046	Nelmonte	1917	Colonial Revival
062-5047	Wills House, James, and Land Grant	1785	ca Colonial
062-5048	New Mount Church and Cemetery	1885	Late 19th and 20th Century Revivals
062-5049	Phillipi and Cemetery Hazelwood	1830	ca Federal
062-5050	Arrington-Horsley House	1901	Queen Anne
062-5051	Sneed-Saunders House and Cemetery	1790	ca Colonial
062-5052	Chestnut Oak	1925	ca Prairie School
062-5053	Fortunes Cove, Mansion and Cemetery	1804	ca Federal
062-5054	Cherry Hill	1775	ca Georgian
062-5055	Bailey House, William Henry	1906	Late 19th and Early 20th Century American Movements
062-5056	Warwick Hall	1800	ca Federal
062-5057	Rose Hill and Cemetery	1800	ca Georgian
062-5058	Gladstone Depot	1889	ca Stick/Eastlake
062-5059	Gladstone Memorial Baptist Church	1892	Late 19th and 20th Century Revivals
062-5060	Taylor Tavern, Betsy Brent House	1780	ca Colonial
062-5061	Whitehead House, Caid Upper Willowbrook	1910	Queen Anne
062-5062	Embly, House and Cemetery	1840	ca Greek Revival

ARCHITECTURAL STYLE REPORT

DHR ID #	PROPERTY NAME	YEAR	ARCHITECTURAL STYLE
	Garland		
062-5063	Narrow Gate Farm Wellington, House and Cemetery	1826	Greek Revival
062-5064	Hat Creek Farm	1830	ca Early Classical Revival
062-5065	Bryant House	1895	Late Victorian
062-5066	Harvey-Bryant House	1890	ca Late Victorian
	Copeland		
062-5067	Edgewood at East Branch	1800	ca Colonial
062-5068	Overseer's Cottage	1830	Mid 19th Century
	Gantt-Redd House		
062-5069	Blue Rock, House and Cemetery	1880	ca Late Victorian
062-5070	East Branch Estate	1891	Late Victorian
	East Branch Farm		
062-5071	Methodist Episcopal Church and Cemetery	1923	Gothic Revival
	Bethlehem United Methodist Church		
062-5072	Allen House, Howard	1800	ca Early Republic
	Cat Rock Mountain Farm		
062-5073	Carter, House and Store, Thomas James	1903	Late Victorian
	Mountain View		
062-5074	Old Fleetwood School	1907	Classical Revival
	White House, Gladys		
062-5075	Dodd House	1890	Late 19th and Early 20th Century American Movements
	Corlett House, Esmee		
062-5076	Haven House and Garage, George "Harold"	1870	ca Colonial Revival
062-5077	Quarters, Goodwin Plantation	1835	Mid 19th Century

75 RECORDS IN THIS REPORT

ARCHITECTURAL STYLE REPORT

DHR ID #	PROPERTY NAME	YEAR	ARCHITECTURAL STYLE
062-5044	Rocky Knob and Cemetery	1765	ca Colonial
062-5036	Harris House	1770	Georgian
062-5054	Cherry Hill	1775	ca Georgian
062-5016	Aylmer	1780	ca Early Republic
	Ewing House		
	White Oak		
062-5060	Taylor Tavern, Betsy	1780	ca Colonial
	Brent House		
062-5047	Wills House, James, and Land Grant	1785	ca Colonial
062-5051	Sneed-Saunders House and Cemetery	1790	ca Colonial
062-5072	Allen House, Howard	1800	ca Early Republic
	Cat Rock Mountain Farm		
062-5067	Edgewood at East Branch	1800	ca Colonial
062-5003	Fall House, Johnny	1800	ca Georgian
062-5005	Fox House, Samuel	1800	ca Early Republic
062-5018	Glowknotnuss Hazel Shade	1800	ca Early Republic
	Hughes House		
062-5037	Hill House and Cemetery	1800	ca Early Classical Revival
062-5033	Mountain View	1800	ca Greek Revival
	Rock Spring Farm		
062-5008	Redland Farm	1800	ca Federal
	Arisman House, Jacob		
062-5038	Roberts - Smith House and Cemetery	1800	ca Federal
062-5057	Rose Hill and Cemetery	1800	ca Georgian
062-5056	Warwick Hall	1800	ca Federal
062-5053	Fortunes Cove, Mansion and Cemetery	1804	ca Federal
062-5027	Cove Creek House	1820	ca Federal
	Trinity		
062-5021	Crawford House	1820	ca Federal
062-5023	Fortunes Cove, Upper House	1820	ca Greek Revival
062-5032	Nallysland	1820	ca Greek Revival
	Monte Vista		
062-5015	Dodd House, Layman	1823	ca Early Republic
062-5063	Wellington, House and Cemetery	1826	Greek Revival
062-5017	Dodd Cabin and Cemetery	1830	ca Mid 19th Century
	Mansfield House, Robert		
062-5064	Hat Creek Farm	1830	ca Early Classical Revival
062-5068	Overseer's Cottage	1830	Mid 19th Century
	Gantt-Redd House		
062-5049	Phillipi and Cemetery	1830	ca Federal
	Hazelwood		
062-5045	Goodwin Plantation	1835	Federal
062-5077	Quarters, Goodwin Plantation	1835	Mid 19th Century
062-5028	Bowling Store	1838	ca Mid 19th Century
	Four Brothers Antiques		

ARCHITECTURAL STYLE REPORT

DHR ID #	PROPERTY NAME	YEAR	ARCHITECTURAL STYLE
062-5062	Embly, House and Cemetery Garland	1840	ca Greek Revival
062-5011	Narrow Gate Farm Hawthorne House, Preacher H. K. Beck-Jones House	1860	ca Greek Revival
062-5007	Onan Goodloe House, Benton Hart Woodley Farm	1860	ca Italianate
062-5025	Powell House	1860	ca Gothic Revival
062-5013	Beech Spring Farm and Cemetery Campbell-Mays House	1870	ca Late Victorian
062-5076	Haven House and Garage, George "Harold"	1870	ca Colonial Revival
062-5009	Haven House, Bennie	1870	ca Colonial Revival
062-5034	Morris Farm, John Wright Farm	1870	ca Late 19th and 20th Century Revivals
062-5026	Mt. Shiloh Baptist Church and Cemetery	1870	Gothic Revival
062-5069	Blue Rock, House and Cemetery	1880	ca Late Victorian
062-5014	Westover Hudson-Mays House	1880	ca Mid 19th Century
062-5048	New Mount Church and Cemetery	1885	Late 19th and 20th Century Revivals
062-5004	Greenfield Page House	1887	Colonial Revival
062-5058	Gladstone Depot	1889	ca Stick/Eastlake
062-5075	Dodd House Corlett House, Esmee	1890	Late 19th and Early 20th Century American Movements
062-5066	Harvey-Bryant House Copeland	1890	ca Late Victorian
062-5070	East Branch Estate East Branch Farm	1891	Late Victorian
062-5059	Gladstone Memorial Baptist Church	1892	Late 19th and 20th Century Revivals
062-5012	Goodloe Store	1893	ca Late 19th and Early 20th Century American Movements
062-5065	Bryant House	1895	Late Victorian
062-5042	Nodei	1899	Colonial Revival
062-5006	Avon Post Office Anderson's Grocery	1900	ca Late 19th and Early 20th Century American Movements
062-5010	Critzer House, Christy Robinson House	1900	ca Late 19th and Early 20th Century American Movements
062-5035	Log House, Fork Mountain	1900	ca Late 19th and Early 20th Century American Movements
062-5024	Roberts House	1900	ca Colonial Revival
062-5050	Arrington-Horsley House	1901	Queen Anne
062-5031	Edgewood	1902	Queen Anne

ARCHITECTURAL STYLE REPORT

DHR ID #	PROPERTY NAME	YEAR	ARCHITECTURAL STYLE
062-5043	Stevens Store, Emmett	1902	Late 19th and Early 20th Century American Movements
062-5073	Carter, House and Store, Thomas James Mountain View	1903	Late Victorian
062-5055	Bailey House, William Henry	1906	Late 19th and Early 20th Century American Movements
062-5074	Old Fleetwood School	1907	Classical Revival
062-5030	White House, Gladys Coffey House	1910	Late 19th and Early 20th Century American Movements
062-5041	Grape Lawn	1910	Colonial Revival
062-5022	Mt. Airy Church and Cemetery	1910	ca Late 19th and Early 20th Century American Movements
062-5061	Whitehead House, Caid Upper Willowbrook	1910	Queen Anne
062-5040	Jonesboro Baptist Church	1912	Gothic Revival
062-5039	Meander Inn	1913	Colonial Revival
062-5019	Valley Farm Coleman House, Emmett Rodes	1913	ca Queen Anne
062-5046	Nelmonte	1917	Colonial Revival
062-5020	Elk Hill Baptist Church	1920	ca Gothic Revival
062-5029	Grant House	1920	Colonial Revival
062-5071	Methodist Episcopal Church and Cemetery	1923	Gothic Revival
062-5052	Bethlehem United Methodist Church Chestnut Oak	1925	ca Prairie School

75 RECORDS IN THIS REPORT