

United States Department of the Interior  
National Park Service

LISTED ON:  
VLR 12/18/2008  
NRHP 7/28/2011

# National Register of Historic Places Registration Form

This form is for use in nominating or requesting determinations for individual properties and districts. See instructions in *How to Complete the National Register of Historic Places registration Form* (National Register Bulletin 16A). Complete each item by marking "x" in the appropriate box or by entering the information requested. If an item does not apply to the property being documented, enter "N/A" for "not applicable." For functions, architectural classification, materials, and areas of significance, enter only categories and subcategories from the instructions. Place additional entries and narrative items on continuation sheets (NPS Form 10-900a). Use a typewriter, word processor, or computer, to complete all items.

## 1. Name of Property

historic name Marion Historic District Boundary Increase  
other names/site number DHR # 119-0012

## 2. Location

street & number Areas of: West Cherry Street; East Main Street; North Main Street; and Maple, North Chestnut, Broad, and North Commerce Streets NA  not for publication  
city or town Marion  vicinity NA  
state Virginia code VA county Smyth code 173 zip code 24354

## 3. State/Federal Agency Certification

As the designated authority under the National Historic Preservation Act, as amended, I hereby certify that this  nomination  request for determination of eligibility meets the documentation standards for registering properties in the National Register of Historic Places and meets the procedural and professional requirements set for in 36 CFR Part 60. In my opinion, the property  meets  does not meet the National Register criteria. I recommend that this property be considered significant  nationally  statewide  locally. (See continuation sheet for additional comments.)

[Signature] 6/8/11  
Signature of certifying official/Title Date

State or Federal agency and bureau

In my opinion, the property  meets  does not meet the National Register criteria. ( See Continuation sheet for additional comments.)

Signature of certifying official/Title Date

State or Federal agency and bureau

## 4. National Park Service Certification

I hereby certify that the property is:

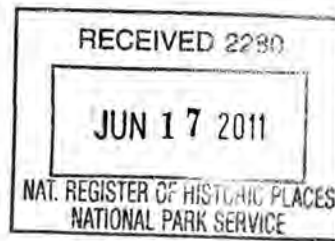
- entered in the National Register.  
 See continuation sheet
- determined eligible for the National Register.  
 See continuation sheet
- determined not eligible for the National Register
- removed from the National Register.
- other,

(explain:)

Signature of the Keeper

Date of Action

\_\_\_\_\_  
\_\_\_\_\_  
\_\_\_\_\_  
\_\_\_\_\_



487

United States Department of the Interior  
National Park Service

National Register of Historic Places  
Registration Form

This form is for use in nominating or requesting determinations for individual properties and districts. See instructions in *How to Complete the National Register of Historic Places registration Form* (National Register Bulletin 16A). Complete each item by marking "x" in the appropriate box or by entering the information requested. If an item does not apply to the property being documented, enter "N/A" for "not applicable." For functions, architectural classification, materials, and areas of significance, enter only categories and subcategories from the instructions. Place additional entries and narrative items on continuation sheets (NPS Form 10-900a). Use a typewriter, word processor, or computer, to complete all items.

1. Name of Property

historic name Marion Historic District Boundary Increase

other names/site number DHR # 119-0012

2. Location

street & number Areas of: West Cherry Street; East Main Street; North Main Street; and Maple, North Chestnut, Broad, and North Commerce Streets NA  not for publication

city or town Marion  vicinity NA

state Virginia code VA county Smyth code 173 zip code 24354

3. State/Federal Agency Certification

As the designated authority under the National Historic Preservation Act, as amended, I hereby certify that this  nomination  request for determination of eligibility meets the documentation standards for registering properties in the National Register of Historic Places and meets the procedural and professional requirements set for in 36 CFR Part 60. In my opinion, the property  meets  does not meet the National Register criteria. I recommend that this property be considered significant  nationally  statewide  locally. (See continuation sheet for additional comments.)

[Signature]  
Signature of certifying official/Title

6/8/11  
Date

State or Federal agency and bureau

In my opinion, the property  meets  does not meet the National Register criteria. ( See Continuation sheet for additional comments.)

Signature of certifying official/Title

Date

State or Federal agency and bureau

4. National Park Service Certification

I hereby certify that the property is:

entered in the National Register.  
 See continuation sheet

determined eligible for the National Register.  
 See continuation sheet

determined not eligible for the National Register

removed from the National Register.

other.

(explain:)

[Signature]  
Signature of the Keeper

Date of Action

Edson K. Beall

7-29-11

**5. Classification**

**Ownership of Property**  
(Check as many boxes as apply)

**Category of Property**  
(Check only one box)

**Number of Resources within Property**  
(Do not include previously listed resources in count)

- private
- public-local
- public-State
- public-Federal
- building(s)
- district
- site
- structure
- object

Contributing	Noncontributing	
204	68	buildings
1	1	sites
0	0	structures
0	0	objects
205	69	Total

**Name of related multiple property listing**  
(Enter "N/A" if property is not part of a multiple property listing.)  
N/A

**Number of Contributing resources previously listed in the National Register**  
1

**6. Function or Use**

**Historic Functions**

(Enter categories from instructions)

DOMESTIC/single dwelling  
DOMESTIC/secondary structure  
COMMERCE/TRADE/business  
EDUCATION/school

**Current Functions**

(Enter categories from instructions)

DOMESTIC/single dwelling  
DOMESTIC/secondary structure  
COMMERCE/TRADE/business  
EDUCATION/school

**7. Description**

**Architectural Classification**

(Enter categories from instructions)

LATE VICTORIAN: Queen Anne  
LATE 19<sup>th</sup> AND EARLY 20<sup>th</sup> CENTURY  
REVIVALS:  
Colonial Revival; Tudor Revival  
LATE 19<sup>th</sup> AND EARLY 20<sup>th</sup> CENTURY  
AMERICAN MOVEMENTS: I-house; Bungalow  
20<sup>th</sup> CENTURY: ART Deco

**Materials**

(Enter categories from instructions)

foundation STONE, BRICK; CONCRETE  
walls BRICK; STONE; WOOD  
CONCRETE  
roof ASPHALT; METAL  
other

**Narrative Description**

(Describe the historic and current condition of the property on one or more continuation sheets.)

**8. Statement of Significance**

**Applicable National Register Criteria**  
(Mark "x" in one or more boxes for the criteria qualifying the property for National Register listing.)

- A** Property is associated with events that have made a significant contribution to the broad patterns of our history.
- B** Property is associated with the lives of persons significant in our past.
- C** Property embodies the distinctive characteristics of a type, period, or method of construction or represents the work of a master, or possesses high artistic values, or represents a significant and distinguishable entity whose components lack individual distinction.
- D** Property has yielded, or is likely to yield, information important in prehistory or history.

**Criteria Considerations** N/A  
(Mark "x" in all boxes that apply.)

Property is:

- A** owned by a religious institution or used for religious purposes.
- B** removed from its original location.
- C** moved from its original location.
- D** a cemetery.
- E** a reconstructed building, object, or structure.
- F** a commemorative property
- G** less than 50 years of age or achieved significance within the past 50 years.

**Areas of Significance**  
(Enter categories from instructions)

ARCHITECTURE  
 COMMERCE  
 EDUCATION

---



---



---

**Period of Significance**  
Ca. 1855 – 1958

**Significant Dates**  
1873, 1887, 1905, 1938

**Significant Person**  
(complete if Criterion B is marked)  
N/A

**Cultural Affiliation**  
N/A

**Architect/Builder**  
Architects: Frank P. Milburn, Eubank & Caldwell,  
Clarence B. Kearfoot, Arthur C. Barlow

**Narrative Statement of Significance**  
(Explain the significance of the property on one or more continuation sheets.)

**9. Major Bibliographical References**

**Bibliography**

(Cite the books, articles, and other sources used in preparing this form on one or more continuation sheets.)

- Previous documentation on file (NPS):** N/A
- preliminary determination of individual listing (36 CFR 67) has been requested
  - previously listed in the National Register
  - Previously determined eligible by the National Register
  - designated a National Historic Landmark
  - recorded by Historic American Buildings Survey # \_\_\_\_\_
  - recorded by Historic American Engineering Record # \_\_\_\_\_

**Primary location of additional data:**

- State Historic Preservation Office
  - Other State Agency
  - Federal Agency
  - Local Government
  - University
  - Other
- Name of repository:  
Marion Public Library

Marion Historic District Boundary Increase  
Name of Property

Smyth County, Virginia  
County and State

**10. Geographical Data**

**Acreage of Property** Approximately 69 acres

**UTM References**

(place additional UTM references on a continuation sheet.)

**USGS Quad Map**

1	<u>17</u>	<u>453151</u>	<u>4076035</u>	3	<u>17</u>	<u>453046</u>	<u>4076143</u>
	Zone	Easting	Northing		Zone	Easting	Northing
2	<u>17</u>	<u>453071</u>	<u>4076147</u>	4	<u>17</u>	<u>453031</u>	<u>4076174</u>

See continuation sheet

**Verbal Boundary Description**

(Describe the boundaries of the property on a continuation sheet.)

**Boundary Justification**

(Explain why the boundaries were selected on a continuation sheet.)

**11. Form Prepared By**

name/title Kristen Luetkemeier and Andra Kowalczyk Martens  
organization Thomason & Associates date July 25, 2008  
street & number 1907 21<sup>st</sup> Ave. South telephone 615/385-4960  
city or town Nashville state TN zip code 37212

**Additional Documentation**

submit the following items with the completed form:

**Continuation Sheets**

**Maps**

A **USGS map** (7.5 Or 15 minute series) indicating the property's location

A **Sketch map** for historic districts and properties having large acreage or numerous resources.

**Photographs**

Representative **black and white photographs** of the property.

**Additional items**

(Check with the SHPO) or FPO for any additional items

**Property Owner**

(Complete this item at the request of SHPO or FPO.)

name See Continuation Sheet  
street & number \_\_\_\_\_ telephone \_\_\_\_\_  
city or town \_\_\_\_\_ state \_\_\_\_\_ zip code \_\_\_\_\_

**Paperwork Reduction Act Statement:** This information is being collected for applications to the National Register of Historic Places to nominate properties for listing or determine eligibility for listing, to list properties, and to amend existing listing. Response to this request is required to obtain a benefit in accordance with the National Historic Preservation Act, as amended (16 U.S.C. 470 *et seq.*)

**Estimated Burden Statement:** Public reporting burden for this form is estimated to average 18.1 hours per response including time for reviewing instructions, gathering and maintaining data, and completing and reviewing the form. Direct comments regarding this burden estimate or any aspect of this form to the Chief, Administrative Services Division, National Park Service, P. O. Box 37127, Washington, DC 20013-7127; and the Office of Management and Budget, Paperwork Reductions Projects (1024-0018), Washington, DC 20303.

United States Department of the Interior  
National Park Service

# National Register of Historic Places Continuation Sheet

Marion Historic District Boundary Increase  
Marion, Smyth County, Virginia

Section number 7 Page 1

---

## SUMMARY DESCRIPTION

The Marion Historic District is located in the town of Marion, Smyth County, Virginia. Marion is located approximately 45 miles northeast of Bristol at the Tennessee/Virginia border, and approximately 275 miles southwest of the capitol of Richmond, Virginia. Marion is located on Highway 11, a significant feature in the town's history. In 1995-1996, a limited reconnaissance survey of Smyth County's historic architectural properties partially inventoried the town of Marion. This survey documented 151 properties as eligible for listing in the National Register of Historic Places. In 1998-1999, the remaining properties within the proposed historic district were inventoried. In 2000, the Marion Historic District was listed in the National Register of Historic Places. The existing district comprises a significant portion of Marion's commercial and residential center. It includes an intact, contiguous area containing commercial and institutional properties lining the principal blocks of Main Street and domestic structures in neighborhoods to the north and south.

In 2007-2008, a subsequent reconnaissance survey identified additional properties on streets adjacent to the existing district boundaries. Following the same pattern of residential development, these properties meet the criteria of resources within the existing district. Established in 1832, the town of Marion was defined by its relationship to the main road (US Highway 11, today), a major thoroughfare and route of commerce from eastern points. As the town's commerce developed, businesses and the earliest dwellings were located along Main Street. Later residential neighborhoods expanded to the streets north and south of the commercial area. The 2007-2008 survey continues the identification of Marion's historic residential neighborhoods, as well as commercial areas.

The boundaries of the existing district, as well as those of the proposed increase, represent the significance of Marion's history as an important center of commerce/trade and education. This history reflects broad patterns of development of the county seat of Smyth County along an important trade route, including rapid industrial and commercial growth during the late nineteenth through early twentieth centuries. Marion's central location in the county, as well as rail and water transportation routes and rich mineral and lumber resources, facilitated its growth. The town's prosperity is reflected in the quality of its architectural character. Dating from around 1855, extant commercial and residential buildings compactly arranged on a street grid create a highly intact district. In the existing district, of the 205 buildings, sites, structures, and objects inventoried, 155 or seventy-six percent, are contributing. Contributing resources are at least fifty years old and possess sufficient architectural character and/or historical significance to meet National Register criteria. Non-contributing resources in the existing district number fifty (50), or twenty-four percent, and are less than fifty years old, or have been altered. The boundary increase adds 205 contributing buildings/sites and 69 non-contributing buildings/sites, with a contributing percentage of approximately 67%.

United States Department of the Interior  
National Park Service

# National Register of Historic Places Continuation Sheet

Marion Historic District Boundary Increase  
Marion, Smyth County, Virginia

Section number 7 Page 2

## INVENTORY:

### NEWLY SURVEYED RESOURCES:

- 1.) 311 Bluff Street 119-0012-0206 Contributing  
One-and-a-half-story, gable-front-and-wing Colonial Revival house built in 1938 has a gable roof with asphalt shingles, interior and exterior end chimneys, stretcher-bond brick exterior, concrete foundation, front patio, original six-panel door, four-light transom, bay window with a central six-over-nine sash window flanked by a four-over-six sash windows. Other windows are original six-over-six sash. Gable dormers with six-over-six wood sash windows; attached, single-bay garage with original paneled-wood, integral porch with original wood posts and original nine-light-and-two-panel door.
- 2.) 111 – 113 Broad Street 119-0012-0224 Contributing  
Two-story, ca. 1950, commercial building with flat roof, brick exterior, and two storefronts with original single-light glass-and-wood door, transoms (one fitted with an air conditioning unit); currently occupied by Rosewood Florist and Headliners. The upper front has two bays, each with three two-over-four-over-two metal windows. The outer portions each have three canted wooden windows. Art Moderne aluminum cornice above storefronts; gravel driveway.
- 3.) 116 Broad Street 119-0012-0225 Contributing  
Two-story, brick commercial building built ca. 1945 with poured-concrete foundation, flat asphalt roof, and exterior of five-course common-bond brick; original storefront with aluminum-and-glass display windows, original blue Carrera glass panels, and an aluminum-and-glass door. The central bay has an original garage entrance with a glass-and-aluminum overhead track door. Windows on the second floor are original paired seven-light steel awning design with concrete sills. Ca. 1950, one-story brick wing with an enclosed garage bay and original display windows with brick bulkheads. Original, multiple-light steel awning windows on the first and second floor; the latter have concrete sills. Entrance with three-panel wooden door; garage bay with ca. 1970 metal garage; ca. 1970 door and windows.
- 4.) 121 Broad Street 119-0012-0226 Contributing  
One-story brick commercial building built ca. 1955 has a concrete foundation, flat asphalt roof, and exterior of six-course common-bond bricks, original slanted inset storefront with aluminum-and-glass display windows and concrete bulkheads, surround with concrete panels; main entrance has a ca. 1990 single-light anodized-aluminum glass-and-wood door; original three-light fixed aluminum window with a concrete surround.
- Ca. 1980 steel open vehicle storage building. Non-Contributing
- 5.) 200 Broad Street 119-0012-0227 Non-Contributing  
One-story, ca. 1965, Colonial Revival commercial building with an asphalt-shingled hipped roof and a brick exterior; the foundation is not visible. Façade has slightly extending side walls and three bays, central bay with a pair of aluminum single-light doors with sidelights, outer bays with a pair of single-light aluminum windows; asphalt driveway, concrete sidewalk in front of the building.
- 6.) 207 Broad Street 119-0012-0228 Non-Contributing  
One-story concrete-block building built ca. 1940 has a flat asphalt roof, interior wall brick chimney, and poured-concrete foundation; front altered ca. 1970 with a brick skirt wall, vertical-board panels, and entrances with glass-and-wood doors. Above the storefront is a wood-shingled shed-roofed canopy. Windows are original paired three-light steel casement design with a two-light transom and concrete sills.
- 7.) 210 Broad Street 119-0012-0223 Non-Contributing

United States Department of the Interior  
National Park Service

# National Register of Historic Places Continuation Sheet

Marion Historic District Boundary Increase  
Marion, Smyth County, Virginia

Section number 7 Page 3

Two-story, ca. 1970 commercial building has a flat roof and a brick exterior; its foundation is not visible. The upper front has a central ca. 1970 interior-lit sign advertising Heilig Meyers and outer simulated window groupings with shutters, pediments, and columns. The lower front is slightly recessed and has ten large mirrored-glass panes; on one side is a pair of aluminum-and-mirrored-glass doors with a transom; full-width concrete patio with simple wooden posts; paved parking lot, gravel drive, sidewalk in front of the building.

8.) 211 Broad Street 119-0012-0229 Contributing

One-and-a-half-story, ca. 1935 Tudor Revival house with a side-gabled asphalt-shingled roof, one brick exterior end chimney, large shed dormer, brick exterior and foundation, three one-over-one wooden windows; projecting gabled bay with a small inner diamond-shaped-pane window and an outer paneled door with a storm door accessed via a concrete patio. Attached metal carport with a flat roof, asphalt driveway.

Ca. 1935 two-story three-car garage with a side-gabled, asphalt-shingled roof, brick exterior, original vertical-wooden-board doors, and upper living space accessed via a ca. 1990 wooden staircase. Contributing

9.) 215 Broad Street 119-0012-0230 Contributing

One-and-a-half-story, ca. 1930, Tudor Revival house with side-gabled roof covered ca. 1990 with crimped metal, stucco-and-half-timbering and brick on the exterior, brick foundation, one-story rear wing with a separate apartment. Three-bay façade: upper gable with a small window, an outer lower six-light metal window, and an inner lower single-light glass-and-wood door; center bay has two lower six-light windows and an upper pair of multiple-light metal casement windows; flat-roofed carport with wooden posts. Walkway leads to rear asphalt parking area.

10.) 219 Broad Street 119-0012-0231 Contributing

One-and-a-half-story, gable-front Bungalow built ca. 1925 has gable roof of asphalt shingles, interior and exterior wall brick chimneys, exterior of stretcher-bond brick, foundation of rock-faced concrete blocks, hipped roof porch with an original brick railing enclosed ca. 1980 with wood and masonite panels and a wooden door. The main entrance is not visible. Windows are original six-over-one wood sash with brick sills, exposed rafter tails, knee-brace brackets; asphalt parking lot, chain link fence, concrete entrance walkway.

11.) 230 Broad Street 119-0012-0232 Contributing

One-story frame house built ca. 1915 has a gable roof of crimped metal, exterior of asbestos shingles, concrete foundation, and central brick chimney; full-width shed-roofed porch with ca. 1990 wooden posts and a wood lattice railing, a ca. 1990 glass-and-wood door, ca. 1990 one-over-two vinyl sash windows.

Original frame storage shed with vertical-board siding, a gable roof of crimped metal, and a hinged wooden door. Contributing

12.) 236 Broad Street 119-0012-0233 Non-contributing

One-story, steel, commercial building occupied by Signs 'N Such building, built ca. 1970. The southern wall is of concrete blocks, while the rest is of steel construction. The building has a gable roof, an exterior of vertical steel panels, and a concrete foundation. It also has aluminum-and-glass doors and single-light windows.

13.) 305 Broad Street 119-0012-0234 Contributing

Two-story, ca. 1890, central-passage house shares a lot with the building at 244 Franklin and has a side-gabled crimped-metal-covered roof, one exterior and one interior brick chimney, weatherboard siding, stone foundation, symmetrical, three-bay façade, three-over-one wooden windows, six-light wood-paneled door and a storm door with a two-light transom and four-light sidelights, full-width, one-story porch with a hipped roof frame without a cover, a wooden floor, brick piers, and tapered wooden posts; rear wing, likely dating from ca. 1920, has a gabled metal-covered roof, weatherboard siding, and a ca. 1970 opening; gravel driveway.

14.) 312 Broad Street 119-0012-0235 Contributing



United States Department of the Interior  
National Park Service

# National Register of Historic Places Continuation Sheet

Marion Historic District Boundary Increase  
Marion, Smyth County, Virginia

Section number 7 Page 4

One-and-a-half-story Bungalow built ca. 1920 has a gable roof of asphalt shingles, interior brick chimney, poured-concrete foundation, exterior of stretcher-bond bricks, integral front porch with original brick posts and a solid brick railing, ca. 1980 glass-and-wood door, ca. 1980 fixed-light and six-over-six vinyl sash windows, gable dormer with knee-brace brackets and paired six-over-six vinyl sash windows; flagstone entrance walkway, attached ca. 1970 concrete-block garage bay with a flat roof and wrought-iron balustrade.

Ca. 1970 steel storage building.

Non-Contributing

15.) 325 Broad Street

119-0012-0236

Contributing

One-and-a-half-story, ca. 1915, gable-front Bungalow with an original crimped-metal roof covering, one interior and one exterior brick chimney, brick exterior and foundation, paired two-light wooden jalousie windows in gable field, paired one-over-one wooden windows, exposed rafter tails, central entrance bay with storm door, partial-width front porch with a hipped roof, solid brick rail, and tapered wooden posts. Asphalt parking area, wooden fence, metal-and-post fence.

16.) 112 Campbell Avenue

119-0012-0298

Contributing

One-and-a-half-story, ca. 1900, Craftsman house with a side-gabled asphalt-shingled roof with an interior brick chimney, exposed rafter tails, brick foundation, metal siding, one-over-one metal windows, gabled dormer with three single-light banked wooden windows. On the façade are three bays; one projects and has a bank of three windows; central bay has original single-light wooden door with a transom. Partial-width, integral wooden porch with posts.

Ca. 1900, original two-story hip-roofed garage has central brick chimney, six-over-six windows, and two ca. 1980 car doors.  
Contributing

Ca. 1900, small, original, frame, gabled shed.

Contributing

17.) 134 Campbell Avenue

119-0012-0273 Contributing

One-and-a-half-story three-bay Colonial Revival dwelling built ca. 1940 has a gable roof of asphalt shingles, a concrete foundation, exterior of stretcher-bond brick, ca. 1980 wood deck with a square-baluster railing, ca. 1980 shed-roofed entry porch with wood posts, original multiple-light glass-and-wood door, ca. 1990 one-over-one vinyl sash windows, three gabled dormers with vinyl siding and ca. 1990 fixed single-light vinyl windows. Gable-roofed side porch with brick columns; basement-level garage entrance with an original glass-and-wood overhead-track door. Stone steps, asphalt driveway.

18.) 142 Campbell Avenue

119-0012-0274

Contributing

One-and-a-half-story four-bay Tudor Revival dwelling built ca. 1940 has a gable roof of asphalt shingles, an interior and exterior wall brick chimney, a concrete foundation, exterior of stretcher-bond brick, projecting gabled bay entrance has an original three-light glass-and-wood arched door and brick surround with a brick keystone, second projecting gabled bay on this façade has stucco and half timbering. Windows date from 2000 and have multiple-light fixed, eight-over-eight, and six-over-six vinyl designs with brick sills. Secondary entrance with a ca. 1990 glass-and-wood door; gable-roofed side porch with an original 15-light glass-and-wood door, ca. 1970 metal awning, arched brick openings with keystones. Asphalt driveway, concrete walkway and stairs to the porch.

19.) 148 Campbell Avenue

119-0012-0275

Contributing

One-story four-bay brick Tudor Revival dwelling built ca. 1940 has a hipped asphalt-shingled roof, an exterior of stretcher-bond brick, a concrete foundation, and an exterior, façade wall, brick chimney, gabled entry bay with an original arched wood door with a circular light within concentric recessed brick arches; original four-light paired steel casement windows with transoms and brick sills, gable fields with rectangular louvered vents; corner integral porch with arched openings and a wrought iron railing, ca. 1960 metal awnings, original 15-light glass-and-wood door; an asphalt driveway.

20.) 154 Campbell Avenue

119-0012-0297

Non-contributing

One-story frame Ranch-style house built ca. 1970 clad with vinyl siding and has a side-gable roof and asphalt shingles.

United States Department of the Interior  
National Park Service

# National Register of Historic Places Continuation Sheet

Marion Historic District Boundary Increase  
Marion, Smyth County, Virginia

Section number 7 Page 5

---

- 21.) 106 Cedar Street 119-0012-0276 Contributing  
One-and-one-half-story, ca. 1920 house with a gabled roof of V-crimp metal, concrete foundation, six-course American-bond exterior, central interior brick chimney, and original two-over-two wood-sash windows, original six-light glass-and-wood door, ca. 1945 glass-and-wood paneled door with a metal awning, one-story enclosed sunroom; gravel parking area.
- 22.) 110 Cedar Street 119-0012-0277 Contributing  
One-story, ca. 1920 house with a ca. 2005 metal side-gabled roof, vinyl siding, and one-over-one vinyl windows. The house is behind 106 Cedar Street.
- 23.) 138 West Cherry Street 119-0012-0162 Contributing  
Two-story, three-bay, ca. 1890 I House has a side-gabled asphalt-shingled roof with two interior end brick chimneys, aluminum siding, and a stone pier foundation with brick infill, two-over-two vinyl windows, ca. 1960 three-diagonal-light wooden door with an aluminum storm door, full-width porch with a wooden floor, milled posts, and an asphalt-shingled hipped roof; one-story shed-roofed ca. 1950 attached garage, rear, one-story gabled addition.  
Ca. 1940, frame storage shed with a gable roof of V-crimp metal and an original, wood panel door. Contributing
- 24.) 204 West Cherry Street 119-0012-0163 Contributing  
One-and-a-half-story frame house built ca. 1890 has a gable roof with original pressed-metal shingles, two interior and one exterior wall chimneys, vinyl siding, stone foundation, full-width porch with Tuscan columns, original fifteen-light glass-and-wood door and a single-light transom, ca. 1980 one-over-one vinyl sash windows; secondary entrance with an original multiple-light door and ca. 1970 metal canopy supported by wrought-iron posts; walkway to street.  
Original one-story garage with a pressed-metal roof, vinyl siding, and hinged garage doors. Contributing
- 25.) 210 West Cherry Street 119-0012-0164 Contributing  
Two-story, ca. 1890, Queen Anne house has a side-gabled roof covered with crimped aluminum, a stuccoed interior chimney, aluminum siding, stone foundation, three bays, one-over-one wooden windows, original single-light wooden door with a transom and sidelights, wrap-around porch with a wooden floor, a crimped-metal-covered hipped roof, Ionic wooden columns, and ca. 1990 lattice trellises; front gables with cornice returns, milled wooden trim, and a round opening; stone retaining wall and a walkway with steps, dirt driveway
- 26.) 214 West Cherry Street 119-0012-0165 Contributing  
One-and-a-half-story brick Bungalow built ca. 1920 has a gable roof with asphalt shingles, an exterior wall brick chimney, poured-concrete foundation, full-width integral porch with original wooden posts and railing covered with wooden shingles, brick-pier foundation, and poured-concrete steps, original multiple-light glass-and-wood door, original three-over-one vertical-light wood sash windows, gabled dormer with three three-over-one vertical sash windows; eaves have exposed rafters and knee-brace brackets; concrete-and-stone retaining wall, asphalt driveway.
- 27.) 220 West Cherry Street 119-0012-0166 Contributing  
One-and-a-half-story ca. 1925 Craftsman house has a ca. 1990 crimped-metal covering and three gabled dormers on its side-gabled roof; in the eaves are brackets; brick exterior chimney, exterior walls, and foundation; three bays, central entrance has a ca. 1980 multiple-light wooden door with a storm door, paired six-over-six wooden windows, full-width front porch with a shed roof, wooden floor, tapered wood posts and brick piers, and a wooden rail with an open pattern; wooden fence, gravel drive, walkway.
- 28.) 222 West Cherry Street 119-0012-0168 Contributing  
One-and-a-half-story brick Bungalow built ca. 1925 has a poured-concrete foundation, gable roof of asphalt shingles, an exterior of six-course common-bond brick, and an exterior wall brick chimney, projecting gable-roofed porch with square wood shingles

United States Department of the Interior  
National Park ServiceNational Register of Historic Places  
Continuation SheetMarion Historic District Boundary Increase  
Marion, Smyth County, VirginiaSection number 7 Page 6

in gable field, original tapered brick posts and a solid brick railing, original single-light glass-and-wood door, ca. 1990 one-over-one vinyl sash windows; exposed rafter tails, knee-brace brackets; side, one-story, shed-roofed bay window; driveway, planter beds.

- 29.) 228 West Cherry Street                      119-0012-0169                      Contributing  
One-story, three-bay, ca. 1890 house has a side-gabled roof with a crimped-metal cover, aluminum siding, a stone pier foundation with brick infill, and two brick interior chimneys, two-over-two wooden windows, central entrance with original single-light paneled-wood door, near-full-width porch with a wooden floor, simple wooden columns, and a shed roof; side elevations have cornice returns and wooden trim; one-story, rear wing; concrete retaining wall, walkway with steps. The house appears to be abandoned.
- 30.) 232 West Cherry Street                      119-0012-0172                      Contributing  
One-story frame house built ca. 1920 has a gable roof of asphalt shingles, an interior brick chimney, exterior of vinyl siding, pier foundation covered with stamped metal panels, full-width porch with original tapered wood columns and a ca. 1980 wood railing, original single-light glass-and-wood door, ca. 1990 one-over-one vinyl sash windows; chain link fence, asphalt driveway.
- 31.) 233 West Cherry Street                      119-0012-0170                      Contributing  
One-and-a-half-story brick Bungalow built ca. 1925 has a gable roof of asphalt shingles, an exterior wall brick chimney, a poured-concrete foundation, exterior of stretcher-bond brick, integral full-width porch with original wood posts and a solid wood-shingled railing, main entrance has a ca. 1980 glass-and-wood door, ca. 1980 one-over-one vinyl sash windows, exposed rafter tails, knee-brace brackets, gabled dormer with an asphalt-shingled exterior; original one-story gabled wing; concrete walkway; concrete driveway, wooden fence.
- 32.) 237 West Cherry Street                      119-0012-0171                      Contributing  
One-story frame house built ca. 1900 has a gable roof of original crimped metal, a brick foundation, an interior brick chimney, exterior of vinyl siding, partial-width porch with original milled columns, ca. 1980 solid wood door, original two-over-two wooden sash windows; concrete walkway, wooden fence.
- Ca. 1930 shed-roofed storage building with vertical board siding, a metal roof, and a hinged door.    Contributing
- 33.) 240 West Cherry Street                      119-0012-0173                      Contributing  
One-story, ca. 1945 house with an asphalt-shingled hipped roof, concrete-block exterior and foundation, and central brick interior chimney, two bays, paired single-light sliding windows; partial-width porch with a wooden floor and a simple wooden post. In the porch's side wall is a ca. 1960 three-diagonal-light wooden door; gravel driveway, retaining wall.
- 34.) 242 West Cherry Street                      119-0012-0174                      Contributing  
One-story ca. 1910 gable-and-wing house has a raised-seam-metal gable roof with a central brick chimney, vinyl siding, stone foundation, two bays, paired ca. 1940 one-over-one wooden windows with ca. 1970 shutters, ca. 1970 paneled door with a storm door, partial-width porch with secondary entrance on side wall, a wooden floor, simple wooden posts, and a hipped roof. The house is set back, located directly behind 240 West Cherry Street; gravel driveway, parking area, concrete.
- 35.) 301 West Cherry Street                      119-0012-0177                      Contributing  
Two-story frame central-hall house built ca. 1905 has a gable roof of V-crimp metal, two central interior brick chimneys, a foundation of rock-faced-concrete blocks, exterior of vinyl siding, three-bay, hipped-roof entry porch with milled columns, ca. 1990 glass-and-wood door, ca. 1990 one-over-one vinyl sash windows, ca. 1960 picture window flanked by one-over-one windows; concrete path, concrete driveway.

One-story ca. 1940 garage with a hipped roof of crimped metal, and vertical-board siding. Contributing

United States Department of the Interior  
National Park Service

# National Register of Historic Places Continuation Sheet

Marion Historic District Boundary Increase  
Marion, Smyth County, Virginia

Section number 7 Page 7

One-story, ca. 1940, frame shed with a metal, shed roof and vertical wood board siding. Contributing

36.) 304 West Cherry Street 119-0012-0175 Contributing

Ca. 1935 one-story Craftsman house has a side-gabled asphalt-shingled roof with two interior and one exterior, facade brick chimneys and wooden brackets, a brick exterior, poured-concrete foundation, four-bay façade, three bays project and are within a single front-gabled section, central of these three bays has an exterior chimney, and the outer ones each have a pair of three-over-one wooden windows. Below is a basement window with six lights. Fourth bay has a cross-gable porch with a tile floor and a brick post, side wall entrance with a ca. 1970 paneled four-light door with a metal barred security door. Attached, gabled metal garage, concrete retaining wall, gravel driveway.

37.) 309 West Cherry Street 119-0012-0176 Contributing

Ca. 1930 one-and-a-half-story Bungalow with a side-gabled asphalt-shingled roof with wooden brackets, two interior brick chimneys, gabled dormer with a bank of three one-over-one wooden windows, vinyl siding, cast-concrete pier foundation with plywood infill, three bays, one projecting, central entrance has a ca. 1980 twelve-light paneled door, one-over-one wood sash windows, partial-width porch with a wooden floor, simple wooden posts, and an open rail; rear, wooden deck; gravel parking and driving area.

38.) 314 West Cherry Street 119-0012-0180 Contributing

One-and-a-half-story, three-bay, ca. 1935 Craftsman house with a brick exterior and a front-gabled asphalt-shingled roof with one interior brick chimney and wood brackets, multiple-light door with a storm door; the foundation is not visible, upper bank of three six-over-one wooden windows, full-width porch with brick posts, a solid brick rail, and a hipped roof. The porch and the upper windows have ca. 2000 crimped metal awnings. The house is set at an angle on top of a steep hill and is accessed by wooden steps and a walkway; small gravel parking area at base of steps

Ca. 1935, frame, one-bay garage with a gable roof of metal, asphalt siding, and an original wood door. Contributing

39.) 322 West Cherry Street 119-0012-0181 Contributing

Ca. 1955 one-story Ranch house has a side-gabled asphalt-shingled roof with one interior and one exterior brick chimney, a brick exterior, poured-concrete foundation, five bays, paired one-over-one windows, paneled-wooden door with a storm door, partial-width, gabled concrete porch with a metal rail and wooden posts, three-part bank of wooden windows with an inner single light window and outer one-over-one windows; gabled porch. Asphalt drive.

40.) 326 West Cherry Street 119-0012-0182 Contributing

One-story, ca. 1920 house, a side-gabled roof with original crimped-metal covering, cornice returns, two interior brick chimneys, and a central front gable, vinyl siding, cast-concrete-block foundation, symmetrical, three-bays façade, entrance with original three-light paneled-wood door, ca. 1950 one-over-one wooden windows, full-width porch with a wooden floor, simple wooden posts and rail, and hipped roof; basement and lower rear wing with an additional exterior brick chimney; gravel driveway, walkway with steps.

41.) 327 West Cherry Street 119-0012-0183 Contributing

One-story frame gable-and-wing house built ca. 1900 has a gable roof of ca. 1990 crimped metal, an exterior of aluminum siding, an interior brick chimney, brick foundation, partial-width porch with ca. 1970 wrought-iron columns, 1970 wooden door, ca. 1990 one-over-one vinyl sash windows, full, rear basement, one-story ca. 1970 concrete-block wing, concrete walkway, brick wall.

42.) 330 West Cherry Street 119-0012-0185 Contributing

One-story gable-and-wing, 1925 house has a gabled roof covered in crimped metal with cornice returns and two interior brick chimneys, aluminum siding, and a plywood-covered foundation, three bays, one projecting; two-over-two wooden windows; paneled door with two lights and a storm door, partial-width porch with a concrete floor, iron posts, and a hipped roof has a rear shed-roofed wing; concrete driveway, walkway.

United States Department of the Interior  
National Park ServiceNational Register of Historic Places  
Continuation SheetMarion Historic District Boundary Increase  
Marion, Smyth County, VirginiaSection number 7 Page 8

- 43.) 335 West Cherry Street 119-0012-0184 Contributing  
One-story frame dwelling built ca. 1900 has a gable roof of original crimped metal, an exterior of aluminum siding, brick-and-concrete foundation, full-width shed-roofed porch with ca. 1970 wrought-iron columns and a brick floor, a ca. 1960 glass-and-wood door, original two-over-two wood sash windows, full, rear basement, concrete retaining wall, wood ramp.
- 44.) 338 West Cherry Street 119-0012-0186 Contributing  
Two-story frame central-hall I house built ca. 1910 has a gable roof of original standing-seam metal, two interior brick chimneys, an exterior of aluminum siding, poured-concrete foundation, full-width shed-roofed porch with ca. 1970 wrought-iron columns, a ca. 1960 glass-and-wood door, ca. 1990 one-over-one vinyl sash windows. Attached ca. 1990 two-car garage with a gable roof, asphalt-covered parking area, concrete walkway.
- 45.) 343 West Cherry Street 119-0012-0187 Contributing  
One-story frame house built ca. 1905 has a hipped roof of asphalt shingles, an exterior of vinyl siding, brick foundation, full-width porch with original milled columns and a railing with square balusters, original single-light glass-and-wood door, ca. 1990 one-over-one vinyl sash windows, gabled dormer with a single-light window. Wooden stairs, walkway, concrete retaining wall,
- 46.) 348 West Cherry Street 119-0012-0188 Contributing  
Ca. 1915 one-story gable-and-wing house with vinyl siding and an asphalt-shingled roof with cornice returns and, in its rear section, an interior brick chimney, foundation varyingly of stone, concrete blocks, or bricks; three bays, one-over-one vinyl windows, a ca. 1980 three-light wooden door, partial-width porch with a crimped-metal shed roof, turned wooden posts and balusters, a wooden floor, and a brick foundation; concrete retaining wall, walkway, driveway.
- Ca. 1940, frame, gable roof, wood board-sided shed Contributing
- 47.) 349 West Cherry Street 119-0012-0189 Contributing  
Two-story building constructed ca. 1920 for commercial use has a first floor of ashlar-finish concrete blocks and bricks and an upper floor of frame with vinyl siding, ca. 1990 crimped-metal roof, poured-concrete foundation, ca. 1970 solid-wood pedestrian door with brick quoins, original garage bay enclosed with vinyl siding has concrete quoins, windows with brick quoins, original six-over-six wood sash windows, exterior, wooden staircase leading to a second-story entrance with a ca. 1970 glass-and-wood door; asphalt parking lot, asphalt driveway.
- One-story frame ca. 1970 storage building with vinyl siding and a metal gable roof. Non-contributing
- 48.) 352 West Cherry Street 119-0012-0190 Contributing  
Ca. 1910 two-story gable-and-wing house has a crimped-metal-covered roof with a central brick chimney and aluminum siding that covers its foundation, two bays, one projecting, one-over-one wooden windows with ca. 1970 shutters, partial-width, two-story porch with a shed roof and wooden floors, simple wooden posts and a ca. 1960, diamond-shaped light glass and wood door on upper level, partially enclosed and with a ca. 1960, square light glass and wood door on lower level; in its exterior wall is a one-over-one vinyl window with shutters. On the rear elevation is a shed-roofed component. Concrete retaining wall; walkway; stone retaining wall; wooden fence.
- 49.) 356 West Cherry Street 119-0012-0191 Contributing  
Ca. 1920 one-story house with a side-gabled asphalt-shingled roof, central interior brick chimney, vinyl siding, concrete-block foundation, three bays, six-over-six vinyl windows, original single-light wood-paneled door with a ca. 1990 storm door, full-width porch with a wooden floor, simple wooden posts, and a hipped roof; concrete patio, retaining walls, walkway with steps.
- 50.) 360 West Cherry Street 119-0012-0192 Contributing

United States Department of the Interior  
National Park ServiceNational Register of Historic Places  
Continuation SheetMarion Historic District Boundary Increase  
Marion, Smyth County, VirginiaSection number 7 Page 9

Ca. 1890 one-story house has an original side-gabled crimped-metal roof with cornice returns, two concrete-block interior chimneys, and a front-facing gable with fascia boards and a round central vent; three-bay symmetrical façade, central bay contains the entrance and the outer bays each have one window; these openings are covered with wood. Full-width porch with a hipped roof, wooden posts, and a wooden floor; small side addition with one boarded opening; rear, lower wing with an additional chimney; stone retaining wall. The house is abandoned and decaying.

51.) North Chestnut and Franklin Streets 119-0012-0221 Noncontributing

Ca. 1980 one-story warehouse is constructed of concrete blocks, flat roof, four bays, upper four-light wooden windows, lower paneled door, hanging garage door; are loading docks.

52.) 120 North Chestnut Street 119-0012-0237 Noncontributing

One-story ca. 1965 commercial building has a flat roof, stuccoed sides with brick sections, permastone-covered façade, two entrances: one with an original wooden paneled door with three lights and the one with a pair of solid metal doors; single-light vinyl window, pair of fixed two-light windows; metal gate leading to an exterior stairway, wooden fence, parking lot; rear elevation is below ground.

53.) 212 North Chestnut Street 119-0012-0212 Contributing

Ca. 1890 one-story house with a cast-concrete foundation, vinyl siding, and a multi-gabled metal-covered roof with two interior brick chimneys, six bays (three recessed), two front gables, original single-light wooden door with a transom and sidelights, one-over-one wooden windows, six-light door, six-over-six wooden window, partial-width porch with a wooden floor, turned wooden posts, and a hipped roof. The visible foundation appears to be more recent than the house's plan and door, and may indicate twentieth-century alterations. Asphalt driveway, walkway.

54.) 225 North Chestnut Street 119-0012-0216 Contributing

One-story house has an asphalt-shingled front-gabled roof with one interior and one exterior brick chimney, aluminum siding, a concrete-block foundation, three bays, central, ca. 1940 three-light wood-paneled door accessed via a concrete entry porch with an iron rail and posts and an asphalt-shingled hipped roof, three-over-one wooden windows, metal awnings; walkway, line of posts on side.

55.) 230 North Chestnut Street 119-0012-0215 Contributing

One-and-a-half-story Colonial Revival house with a side-gabled asphalt-shingled roof with an exterior brick chimney, two gabled dormers with asbestos shingles and one-over-one vinyl windows, two bays, pair of one-over-one vinyl windows, a recessed entrance with a two-light paneled door with an aluminum storm door, concrete porch with a brick post; small U-shaped rock wall, gravel drive, concrete sidewalk, walkway with concrete walls and wooden fences.

56.) 316 North Chestnut Street 119-0012-0239 Non-Contributing

One-story house built ca. 1910 has a gable roof of asphalt shingles, an exterior of stretcher-bond brick, concrete foundation; originally been frame, then brick veneered ca. 1945. Facade has a hip-roofed entry porch with ca. 1970 wrought-iron columns on ca. 1950 brick piers, ca. 1950 glass-and-wood door, original two-over-two wood sash windows; gravel driveway, walkway, wooden fence

Ca. 1950 concrete-block workshop and storage building. Contributing

57.) 324 North Chestnut Street 119-0012-0240 Contributing

One-story frame house built ca. 1910 has a gable roof of standing-seam metal, a central brick chimney, concrete pier foundation, exterior of vinyl siding, full-width shed-roofed porch with ca. 1980 wood posts and railing, original six-light paneled glass-and-wood door, ca. 1980 one-over-one vinyl sash windows, central gable; concrete walkway.

58.) 330 North Chestnut Street 119-0012-0238 Contributing

United States Department of the Interior  
National Park Service

# National Register of Historic Places Continuation Sheet

Marion Historic District Boundary Increase  
Marion, Smyth County, Virginia

Section number 7 Page 10

Ca. 1940 storage and office building with three conjoined sections has a two-story component with an asphalt-shingled gabled roof, one-over-one vinyl windows, and a concrete-block exterior. Attached are two one-story flat-roofed concrete-block components with metal multiple-light casement windows.

59.) 301 College Street 119-0012-0196  
School complex consists of five buildings:

Ca. 1995 Ralph G. Boehm Gymnasium has brick and metal siding exterior, metal gable roof. Non-contributing

Ca. 1995 Blue Ridge Wellness Center has brick exterior, raised gable roof of asphalt shingles, single-light, vinyl windows. Non-contributing

Ca. 1980 storage building with gable roof of asphalt shingles, poured concrete foundation, T-111 Siding. Non-contributing

Ca. 1970 support building of frame construction with a gable roof; wood canopy. Non-contributing

Ca. 1990 support building is pre-fabricated, crimped metal panels, gabled metal roof; wood canopy. Non-contributing

60.) 407 College Street 119-0012-0195 Contributing  
One-and-a-half-story ca. 1940 cross-gabled Bungalow with an asphalt-shingled roof with two brick chimneys, brick exterior, poured-concrete foundation, gable with two central one-over-one wooden windows, four bays, original single-light wood-paneled door with sidelights and a multiple-light storm door, one one-over-one wooden windows, wrap-around porch has a hipped roof, wooden posts on brick piers, and a concrete floor; walkway, sidewalk, asphalt driveway.

61.) 411 College Street 119-0012-0194 Contributing  
One-and-a-half-story, ca. 1920 house has a side-gabled asphalt-shingled roof with two interior brick chimneys, large gabled dormer with three wooden one-over-one windows, vinyl siding, brick foundation, one-over-one wooden windows, symmetrical, three-bay façade has a two-light paneled door with sidelights, a transom, and a storm door, full-width porch with a shed roof, iron posts, a wooden floor, wooden ramp; one-story wing, wooden deck, asphalt driveway, driveway, walkway.

Ca. 1950 small cottage with a side-gabled asphalt-shingled roof, original three-light glass and wood door, vinyl siding. Contributing

62.) 412 College Street 119-0012-0193 Contributing  
One-story gable-and-wing house from 1932 has a side-gabled roof with asphalt shingles and one interior brick chimney, a brick exterior with corbelling below the eaves, poured-concrete foundation, four-bay façade, eight-over-eight wooden windows, gabled entrance stoop with a concrete-and-tile floor and iron posts, half-circle-shaped vent in gable field, at the basement level is a garage bay. Planting beds, curving walkway, concrete wall.

63.) 112 North Commerce Street 119-0012-0241 Contributing  
Ca. 1940 one-story, two-bay, Minimal Traditional multiple-gabled house with an asphalt-shingled roof, twenty-light wooden window, hipped roofed wing with an inner solid door with a screen door and an outer bank of four six-over-one wooden windows; rear, interior brick chimney; walkway, brick-and-concrete retaining wall, asphalt driveway, graveled strip.

64.) South Commerce Street 119-0012-0299 Non-Contributing  
At this address is Magic Wand Carwash, a ca. 1970 two-story hipped roof carwash with a standing-seam metal roof with metal stove pipes, upper vinyl siding and lower brick veneer. The upper floor has one-over-one wooden windows and metal double doors, and the lower floor has four open bays with a central enclosed passage with a metal door. Asphalt lot; three vacuum units.

United States Department of the Interior  
National Park ServiceNational Register of Historic Places  
Continuation SheetMarion Historic District Boundary Increase  
Marion, Smyth County, VirginiaSection number 7 Page 11

- 65.) 149 South Commerce Street 119-0012-0300 Contributing  
One-and-a-half-story ca. 1925 brick Craftsman-influenced house with a stone-and-brick foundation and a side-gabled asphalt-shingled roof with wooden brackets. On the façade are two gabled dormers with six-over-six wooden windows, exposed rafter tails, and asphalt shingles; central entry with a ca. 1980 storm door flanked by wooden two-over-two windows, three-bay concrete porch has a shed roof and milled posts, a wood-board rail, concrete steps with metal rails, and a wooden ramp; shed-roofed side porch. Asphalt drive, gravel-and-concrete walk, concrete lamp post.
- 66.) 211 South Commerce Street 119-0012-0301 Contributing  
One-story ca. 1925 brick cottage with a concrete-block foundation, side-gabled asphalt-shingled roof, three bays, front-gabled entry porch with grouped posts and a concrete floor, twelve-light original wooden door flanked by wooden one-over-one windows with louvered wooden shutters with a pine-tree cut out at the top, an interior brick chimney, side-gabled concrete porch with posts, rear, shed-roofed wing with upper asbestos shingles.  
The house has an original concrete block garage with original paneled wood garage door and three-light paneled wood pedestrian door has a rear shed-roofed wing. Contributing
- 67.) 311 South Commerce Street 119-0012-0302 Contributing  
Ca. 1925 Tudor Revival house with a brick exterior, concrete foundation, and asphalt-shingled hip roof with a front gable, two bays, one interior and one exterior brick chimney, pair of six-over-six wooden windows, three-light basement window, partial-width, integral porch with concrete steps and floor, a solid brick rail, and an arched masonry opening. The door is in the side wall, and in the façade wall is a six-over-six wooden window; gravel drive, parking area, retaining wall.
- 68.) 135 Franklin Street 119-0012-0219 Non-Contributing  
Ca. 1910 two-story central-passage house has been extensively altered; it has an asphalt-shingled hipped roof and vinyl siding; its foundation is not visible. The symmetrical three-bay facade has upper one-over-one wooden windows on each side, a pair of the same below, and a central entrance with a ca. 2000 art-glass door and sidelights. All openings have ca. 1980 louvered shutters. The one-story porch has an asphalt-shingled shed roof, milled posts with Steamboat Gothic trim at the corners, and a ca. 2000 wooden floor; low concrete retaining wall, wooden fence, asphalt driveway.
- 69.) 204 Franklin Street 119-0012-0217 Contributing  
One-and-a-half-story, ca. 1925 Tudor Revival house has a gable roof of asphalt shingles, a brick foundation, exterior of stretcher-bond brick, prominent, façade, brick chimney with inlaid brick panels, gable-roofed entry porch that was enclosed ca. 1970 with steel jalousie windows and sliding-track aluminum-and-glass doors. The original door from the porch to the house is not visible. The windows are ca. 1980 one-over-one and fixed vinyl sash design. In the gable field on the front is an original diamond-shaped attic window; wooden-rail fence, asphalt driveways, asphalt walkway.
- 70.) 205 Franklin Street 119-0012-0218 Contributing  
One-story Tudor Revival house built ca. 1925 has a poured-concrete foundation, gable roof of asphalt shingles, exterior of stretcher-bond bricks, gable-roofed entry porch with original brick columns and arched porch openings with header-bond bricks, ca. 1980 glass-and-wood door, ca. 1980 one-over-one vinyl sash windows; concrete walkway.
- 71.) 209 Franklin Street 119-0012-0242 Contributing  
Two-story Bungalow built ca. 1925 has a gable roof of asphalt shingles, exterior of stretcher-bond bricks, concrete foundation, façade wall brick chimney with an inset arched concrete panel and metal grille, ca. 1980 integral porch with wood posts and railing, ca. 1980 glass-and-wood door, ca. 1980 one-over-one vinyl sash windows; exterior wooden staircase to second-floor apartment, ca. 1980 second-story wing addition with vinyl siding; concrete walkway.
- 72.) 231 Franklin Street 119-0012-0243 Contributing



United States Department of the Interior  
National Park Service

# National Register of Historic Places Continuation Sheet

Marion Historic District Boundary Increase  
Marion, Smyth County, Virginia

Section number 7 Page 12

Members founded the First Baptist Church in 1865. The current one-story Colonial Revival building, brick veneered in 1950, has a front-gabled asphalt-shingled roof with cornice returns and a pyramidal framed steeple with louvered vents, symmetrical three-bays façade, pair of ca. 1970 paneled doors with a three-light arched transom, concrete stoop with steps on one side and a ramp on the other, two-over-two wooden windows with textured colored glass panes from ca. 1950 and a four-light arched transom on each side. Above the door is an internally lit cross with the faded slogan "FIRST BAPTIST CHURCH;" sign with the congregation's name, historic marker. Recessed, enclosed hip-roofed, secondary entry bay; concrete-block hipped roof Fellowship Hall, added in 1982; walkway.

73.) 244 Franklin Street 119-0012-0244 Contributing  
Two-story, ca. 1940 multiple-occupancy building with an asphalt-shingled pyramidal roof and concrete-block exterior and foundation, three bays, three-over-one original wooden windows, original three-light wood-paneled door with a ca. 1980 storm door, original single-light glass-and-wood door sharing an opening with a single-light upper window and concrete-filled lower section (this configuration appears to be original), ca. 1960 multiple-light door and storm door sharing an opening with a two-light metal window and plywood infill; sidewalk in front of the building, which shares a lot with the house at 305 Broad Street.

74.) 208 Funk Street 119-0012-0205 Noncontributing  
Two-story building originally built as a garage ca. 1915 has a hipped roof of asphalt shingles, a brick foundation, exterior of hollow-core tiles; ca. 1970 shed-roofed garage bay with vinyl siding and ca. 1990 overhead vinyl door. Windows are ca. 1990 one-over-one vinyl sash. This building has a ca. 1990 wooden canopy on the southern elevation and intersects the canopy and ramp at 301 College Street.

75.) 218 Funk Street 119-0012-0204 Contributing  
Ca. 1930 Tudor-influenced two-story house has an asphalt-shingled side-gabled roof with an interior end chimney, a brick exterior, poured-concrete foundation, central gable, three bays, upper pair of six-over-six wooden windows, lower bank of three six-over-six wooden windows, lower ca. 2000 paneled door and a storm door, in the gable field is decorative brickwork; attached, concrete stoop, wooden deck, concrete retaining wall, curved walkway with steps.

One-story ca. 1890 brick outbuilding with a hipped roof and a stuccoed foundation. Contributing

76.) 224 Funk Street 119-0012-0203 Contributing  
Ca. 1920 one-story Craftsman house has an asphalt-shingled cross-gable roof with a central interior brick chimney and wooden brackets, a wood-shingled exterior with stucco and vertical boards in the gable field, a brick foundation, lower rear wing, three-bay façade, central paneled door with a storm door, four-over-one wooden windows, full-width porch with a wooden floor and shingled posts, basement-level openings on side elevation; gravel driveway, concrete retaining wall, walkway, planting bed.

77.) 230 Funk Street 119-0012-0202 Contributing  
One-story, ca. 1930, gambrel-and-wing house has an asphalt-shingled roof with an interior brick chimney, wood-shingle siding, poured-concrete foundation, three bays, paired one-over-one vinyl windows, three-diagonal-light door with ca. 1960 sidelights, gabled entry porch with a concrete floor, simple wooden posts and rail, and vinyl siding in the gable field; secondary entrance has a gabled shelter; asphalt driveway, concrete walkway, wooden fence, concrete retaining wall.

Ca. 1960, one-story, frame storage shed. Non-contributing

78.) 651 North Holston Street 119-0012-0303 Contributing  
Two-and-a-half-story Queen Anne house built ca. 1903 with a hipped standing-seam metal roof, an interior brick chimney, wood-board siding, covered foundation, wrap-around one-story hipped porch with a wooden floor and posts; three bays, one projecting, window on each level, 13-light original wooden attic window with colored glass, central entrance with a ca. 1990 door and a single-light transom, tower with attic ocular windows and lower windows on each floor. In general, the house's windows have metal one-over-one sashes and ca. 1980 louvered shutters; split-rail fence, concrete driveway.

United States Department of the Interior  
National Park Service

# National Register of Historic Places Continuation Sheet

Marion Historic District Boundary Increase  
Marion, Smyth County, Virginia

Section number 7 Page 13

Ca. 1960 gabled one-story large shed. Non-Contributing  
Ca. 1970 pre-fabricated shed with a Gambrel roof. Non-Contributing  
Ca. 1990 metal smokehouse. Non-Contributing

79.) 657 North Holston Street 119-0012-0304 Contributing

Ca. 1905, two-story Craftsman front-gabled, three-bay house with a pressed-tile roof with large hipped dormers with wooden one-over-one windows, an interior brick chimney, wooden shingles in gable field, central entrance with an original single-light wooden door and transom, one one-over-one wooden windows, full-width hip-roofed porch has a wooden floor, wooden Ionic columns, and a wooden rail, attached metal awning; walkway, split-rail fence, paved drive, standing lamp, concrete wall and wire fence.

Original one-story brick garage with a front-gabled metal roof with exposed rafter tails, six-over-six wooden windows, and original paneled wooden pedestrian and car doors. Contributing

80.) 116 East Lee Street 119-0012-0207 Noncontributing

Altered, one-story concrete block-and-stucco house built ca. 1930 has a concrete-block foundation, stucco exterior, hipped roof of asphalt shingles, and interior brick chimney, partially removed original basement level. Bay windows were added to the front ca. 1990. The partial-width integral front porch has an original wooden post and corner brick pier, original three-vertical-light glass-and-wood door. Some windows are original paired three-light casement design with two-light transoms. Other windows are ca. 1990 vinyl sash and casement design; at side is an excavated area and a gravel parking area.

81.) 119 East Lee Street 119-0012-0208 Contributing

Ca. 1950 one-story Minimal Traditional house with a side-gabled asphalt-shingled roof with interior brick chimneys, a brick exterior, concrete foundation, three bays, one is front-gabled projecting, central bay has a six-light wooden door with a storm door, paired of one-over-one wooden windows, partial-width porch with a concrete floor and a brick post; gravel driveway.

82.) 120 East Lee Street 119-0012-0209 Contributing

One-story brick gable-front Bungalow built ca. 1925 has a concrete-block foundation, asphalt-shingled roof, exterior of stretcher-bond brick, exterior wall brick chimney, exposed rafter tails, full-width shed-roofed porch with tapered wood posts on brick piers, original railing with square balusters, original three-vertical-light glass-and-wood door, original three-over-one vertical-light sash windows; wooden lattice panels below porch, concrete steps, secondary side entrance with a glass-and-wood door; asphalt driveway.

83.) 124 East Lee Street 119-0012-0210 Contributing

Ca. 1945 one-and-a-half-story house with a side-gabled asphalt-shingled roof with a large shed dormer with three one-over-one wooden windows, brick exterior, concrete-block foundation, three-bay façade, paired one-over-one wooden windows, central, fifteen-light door with a storm door, full-width porch with a concrete floor, wooden rails, and arched brick openings; attached rear, flat-roofed aluminum carport served by an asphalt driveway.

84.) 131 East Lee Street 119-0012-0211 Non-Contributing

Ca. 1960 one-story Ranch house has a side-gabled asphalt-shingled roof with an interior brick chimney, board-and-batten upper and brick lower exterior, concrete foundation, four bays, three-part sliding wooden windows, bank of three three-light jalousie windows, gabled entry porch with a concrete floor, brick railing, board-and-batten side walls, paneled main door with a storm door; asphalt driveway, stepping stones.

85.) 219 East Lee Street 119-0012-0245 Contributing

Ca. 1925 Bungalow with a side-gabled asphalt-shingled roof with an exterior brick chimney has a brick exterior, cast-concrete-block foundation, three-bay façade, enclosed, partial-width porch with wood-shingle siding and brick posts, paired one-over-one

United States Department of the Interior  
National Park Service

# National Register of Historic Places Continuation Sheet

Marion Historic District Boundary Increase  
Marion, Smyth County, Virginia

Section number 7 Page 14

wooden windows, single-light glass-and-wood door with sidelights, three-light basement windows are on side elevation, rear wooden porch with a shed roof and a basement entrance enclosed ca. 1985, asphalt parking areas.

86.) 224 East Lee Street 119-0012-0220 Non-Contributing  
The Home and Auto Tire Center building was built in 1974. It is a one-story commercial building with a brick exterior, gable roof of asphalt shingles, and concrete foundation; storefront with aluminum-and-glass display windows, three garage bays with original metal overhead-track doors, asphalt parking area, standing sign.

87.) 311 East Lee Street 119-0012-0278 Contributing  
One-story frame three-bay Minimal Traditional dwelling built ca. 1945 has a gable roof of asphalt shingles, an exterior wall brick chimney, concrete block foundation, exterior of asbestos shingles, original gable-roofed entry porch with wood posts and a wrought iron railing and brick foundation, ca. 1990 glass-and-wood door, original eight-over-eight and six-over-six wood sash windows, are six-over-six wood-sash attic windows, secondary entrance with a ca. 1990 glass-and-wood door; gravel driveway, concrete walkway.

88.) 315 East Lee Street 119-0012-0279 Contributing  
One-story frame three-bay Minimal Traditional dwelling built ca. 1945 has a gable roof of asphalt shingles, exterior of asbestos shingles, exterior wall and interior brick chimney, concrete block foundation, entrance with a Colonial Revival-style surround with fluted Doric pilasters and a cornice, ca. 1970 nine-light paneled glass-and-wood door with a ca. 1960 metal awning, original eight-over-eight and six-over-six wood sash windows, porch foundation is of brick, secondary side entrance with a hipped roofed wood canopy supported by knee-brace brackets, original nine-light-and-two-panel glass-and-wood door; gravel driveway, stone walkway.

89.) 321 East Lee Street 119-0012-0280 Contributing  
One-story frame gable-and-wing five-bay dwelling built ca. 1910, a gable roof of asphalt shingles, an exterior of weatherboard siding, foundation of rock-faced concrete block, partial-width shed-roofed porch with ca. 1970 wrought iron posts and a solid wood railing, original single-light glass-and-wood door, single-light rectangular transom, original two-over-two wood sash windows with pedimented cornices supported by brackets, chamfered corner bays, large milled eave brackets, diagonal-wood siding in gable fields, gable panel with a fleur de lis design; concrete block wall, concrete walkway, asphalt driveway.

Ca. 1925 hipped roof, frame garage with a standing-seam metal roof and weatherboard siding. The garage has original vertical-board hinged double doors. Contributing

Ca 1960 frame shed-roofed storage building with vertical-board siding. Non-Contributing

90.) 325 East Lee Street 119-0012-0281 Contributing  
One-story frame three-bay central hall dwelling built ca. 1910 has an interior brick wall chimney, a concrete pier foundation, a gable roof of asphalt shingles, exterior of vinyl siding, flat-roofed entry porch with ca. 1990 wood posts and railing, original single-light glass-and-wood paneled door and a rectangular single-light transom, central gabled bay with a rectangular louvered vent, original two-over-two wood sash windows, rear wing with an interior brick chimney; gravel driveway, concrete walkway.

91.) 180 Locust Street 119-0012-0282 Non-Contributing  
Ca. 1985, one-and-a-half-story house with a gabled roof of asphalt shingles, exterior end brick chimney, brick skirt wall, concrete foundation, one-over-one vinyl-sash windows, T-111 siding, an integral, wrap-around porch with wooden posts, four-panel door; asphalt parking area.

92.) 181 Locust Street 119-0012-0246 Contributing  
Ca. 1900 two-story, three-bay, I House with a concrete foundation, lower board-and-batten and upper vinyl-sided exterior, side-gabled roof with asphalt shingles, two interior central brick chimneys, and six-over-six vinyl-sash windows, full-width one-story

United States Department of the Interior  
National Park Service

# National Register of Historic Places Continuation Sheet

Marion Historic District Boundary Increase  
Marion, Smyth County, Virginia

Section number 7 Page 15

porch with wrought iron posts and rails, original single-light glass-and-wood paneled door, two-story rear L wing, one-story shed L wing enclosed as a porch; vinyl picket fence; asphalt driveway.

Ca. 1980 frame carport. Non-Contributing

93.) 185 Locust Street 119-0012-0247 Contributing

Ca. 1945, one-story, four-bay Ranch house with a concrete foundation, stretcher bond brick exterior, interior brick chimney, side-gabled roof with a ca. 1990 metal covering, original two-over-two horizontal wood-sash windows, and triple single-light wood picture windows with brick sills, an original three-horizontal-light glass-and-wood door, attached, metal carport has a similar door into house; gravel drive.

94.) 188 Locust Street 119-0012-0283 Contributing

Ca. 1925, one-and-a-half-story, three-bay Bungalow with a concrete block foundation, stretcher-bond brick exterior, interior brick chimney, side-gabled roof of asphalt shingles, large gabled dormer, full-width porch with brick posts and Tuscan columns, original single-light glass-and-wood door with a single-light transom and sidelights, one-over-one wood sash windows and leaded glass transoms; concrete parking area, walkway, asphalt driveway at garage.

Ca. 1940 garage with an asphalt-shingled roof and an original five-panel pedestrian door. Contributing

95.) 191 Locust Street 119-0012-0248 Non-Contributing

Ca. 1960 one-story Ranch house with vinyl siding, one-over-one metal-sash windows with original metal awnings, brick foundation, side-gabled roof with asphalt shingles, original wood paneled door with an eye-level viewing pane, entrance with a flat canopy; driveway and asphalt-paved parking area.

96.) 194 Locust Street 119-0012-0249 Contributing

One-story, ca. 1920 dwelling with a brick foundation, gable-front roof with ca. 2000 metal covering, one-over-one vinyl windows, and vinyl siding. A shed canopy is over the entrance. The house is set back from Locust Street and accessed via a gravel driveway.

Behind the house is a ca. 1920 frame shed with a gabled metal roof. Contributing

97.) 196 Locust Street 119-0012-0250 Contributing

One-story, ca. 1925 dwelling with a concrete foundation, stretcher-bond brick exterior, façade exterior brick chimney, side-gabled roof of asphalt shingles, and six-over-six vinyl windows with soldier-course lintels and brick brackets, projecting gable-front vestibule with a ca. 1980 oval-light door, scalloped wood shingles in gable field and on the siding of the shed-roofed porch on the side elevation. Ca. 2000 wooden decks are on each side elevation, rock steps.

To the rear is a ca. 1945 shed with asbestos siding and a gable metal roof. Contributing

98.) 197 Locust Street 119-0012-0251 Contributing

Ca. 1945 side-gabled house has roof covered with asphalt shingles, stretcher-bond brick exterior, two-over-two horizontal wood-sash windows, concrete block foundation, interior central brick chimney, original glass-and-wood door. On a side elevation is a metal carport with metal posts.

99.) 201 Locust Street 119-0012-0284 Contributing

Ca. 1900, two-story house with a side-gabled roof, vinyl siding, central interior brick chimney, six-over-six wood-sash windows, an original single-light glass-and-wood door, and a partially enclosed hip-roofed porch with wooden posts. The foundation is not visible. The house is accessed via a gravel lane from Locust Street.

100.) 203 Locust Street 119-0012-0252 Contributing

United States Department of the Interior  
National Park Service

# National Register of Historic Places Continuation Sheet

Marion Historic District Boundary Increase  
Marion, Smyth County, Virginia

Section number 7 Page 16

Ca. 1900 one-story gable-front-and-wing house with a concrete-block infilled foundation, vinyl siding, one-over-one vinyl-sash windows, two interior brick chimneys, and a complex roof of asphalt shingles, hipped dormers, partial-width three-bay porch with ca. 1980 wooden posts and railing, original single-light glass-and-wood door.

To the rear is a ca. 1925 gambrel-roofed shed with a V-crimp metal roof, wood casement windows with missing panes, and added vinyl siding. Contributing

101.) 204 Locust Street 119-0012-0253 Contributing

One-and-a-half-story, ca. 1925 Bungalow with a concrete foundation, gable-front roof of asphalt shingles, stretcher-bond brick exterior, one-over-one paired vinyl-sash windows, exterior brick chimney, full-width three-bay porch with brick posts and a closed brick rail, Craftsman-style glass and wood door, gabled dormer with wood-shingle siding, knee-brace brackets, exposed rafter tails; attached porte cochere, rear, ca. 2007 wooden deck, gravel lane, asphalt drive.

Ca. 1925, frame shed with a gabled roof. Contributing

102.) 207 Locust Street 119-0012-0254 Contributing

One-and-a-half-story, ca. 1910 house with a side-gable roof of asphalt shingles, brick pier foundation with infill, vinyl siding, central interior brick chimney, one-over-one vinyl-sash windows, partial-width integral porch with ca. 2000 wood posts and rail, gable dormer; rear, ca. 2000 wood deck; gravel driveway, walkway.

Ca. 1980 frame carport. Non-Contributing

103.) 212 Locust Street 119-0012-0255 Contributing

One-story, three-bay, ca. 1925 Bungalow with a concrete foundation, stretcher-bond brick exterior, exterior brick chimney, interior brick chimney, gable-front roof of asphalt shingles, original three-over-one wood-sash paired windows, eaves brackets, wood shingles in gable field, full-width porch, three bays, brick posts, and a closed brick rail, three-vertical-light glass and two-panel wood door; attached porte cochere on side elevation; asphalt driveway, walkway.

104.) 213 Locust Street 119-0012-0256 Contributing

One-and-a-half-story, three-bay, ca. 1940 dwelling with a rock-faced concrete foundation, stretcher-bond brick exterior, brick chimney on the façade, interior brick chimney, six-over-six wood-sash windows, projecting gabled vestibule with original nine-light glass-and-wood doors with an arched transom, porch with tapered wood posts on brick piers; basement garage bay with an original glass-and-wood paneled overhead-track door; rear and side, ca. 1970 wooden deck; rock retaining walls, walkway.

Ca. 1940 frame shed-roofed shed with a metal roof. Contributing

105.) 234 East Main Street 119-0012-0305 Non-Contributing

Ca. 1921 one-story service station "RR Stations," "BP," and "The Lucky Pub," has 2007 renovations, pressed-metal siding, Mansard-esque flat roof, small metal windows, fuel island, asphalt lot, standing sign.

106.) 237 East Main Street 119-0012-0306 Noncontributing

Ca. 1970 commercial building with a flat roof, concrete-and-wood exterior, metal-case fixed windows, and a glass-and-metal door, porte cochere on the side. The building presently houses Seaver Brown Funeral Services.

Ca. 1970 garage with a similar appearance to the building's. Noncontributing

107.) 242 East Main Street 119-0012-0307 Noncontributing

United States Department of the Interior  
National Park Service

# National Register of Historic Places Continuation Sheet

Marion Historic District Boundary Increase  
Marion, Smyth County, Virginia

Section number 7 Page 17

Ca. 1915, altered, two-bay, two-story building with a six-course American-bond brick exterior, concrete foundation, shed-roofed façade, flat roof with parapet, ca. 1970 storefront includes a glass-and-metal door and metal display windows, second entrance has a ca. 1980 metal panel door, vinyl replacement windows on second floor. It presently houses Merle Norman. Asphalt parking lots are on both sides of the building.

108.) 249 East Main Street 119-0012-0308 Contributing

Ca. 1915, seven-bay, two-story commercial building with a seven-course American-bond brick exterior, concrete foundation, flat roof with parapet, brick pilasters divide façade bays; three entrances, two are recessed; one has original single-light double doors the other has an original single-light wooden door. The third entrance leads to the upper floor and has a ca. 1970 glass-and-metal door. One storefront has original wooden display windows and the other has ca. 1970 metal display windows. Two-over-two and nine-over-nine wood sash windows on the upper floor have boarded panes. Corbelling is between the floors and below the roofline. The building currently houses the Marion Flower and Gift Shop. An asphalt lot is west of the building.

109.) 250 East Main Street 119-0012-0309 Noncontributing

Ca. 1920 one-story brick building with a five-course American bond exterior, a concrete foundation, flat roof with an side parapet. The appearance of the façade, with its drivet exterior, metal fixed windows, and glass-and-metal door, dates from ca. 1990. It presently houses Express Check Advance. A creek flows beneath the building, and an asphalt lot is between the building façade and the street.

110.) 302 East Main Street 119-0012-0310 Noncontributing

Ca. 1970 one-story building with a stucco exterior, brick flood course, shed awnings of asphalt shingles, two ca. 1980 metal bay doors and two ca. 1960 metal-and-glass bay doors.

111.) 311 East Main 119-0012-0257 Contributing

Ca. 1900 one-story vernacular dwelling with a rock foundation, vinyl siding, a hipped roof covered with asphalt shingles, one-over-one ca. 1990 vinyl-sash windows, gable-front projecting bay, slab concrete stoop, ca. 1980 metal paneled door with a lunette; rock wall, concrete path.

112.) 315 East Main Street 119-0012-0258 Contributing

Ca. 1925 one-story Tudor Revival-influenced dwelling with a concrete block foundation, asbestos siding, gabled roof covered with asphalt shingles, an exterior wall rock chimney on the façade, original three-over-one wood-sash windows, shed roof over a half-width porch with square wooden posts and a rock-wall rail, ca. 1980 metal paneled door with two small panes at the top, central, gable-front, rock-faced, enclosed vestibule with an original three-vertical-light glass-and-wood door with a gabled canopy, gabled dormer, rear, cross-gabled wing; driveway, walkway, ca. 1960 wooden ramp.

Ca. 1920 brick secondary dwelling with a hipped roof and central chimney. Contributing

113.) 322 East Main Street 119-0012-0285 Contributing

Ca. 1920 two-story commercial building with a concrete foundation, six-course American-bond-variation-with-Flemish-rows brick exterior, and gable-front roof with asphalt shingles, entrance with soldier-course surround and a single-light glass and three-panel wood door with a three-light transom and flat canopy; one-over-one wood-sash windows with brick sills; side entrances with original glass-and-wood paneled doors and metal awnings, glass-block-filled window; walkway with a metal pipe railing.

114.) 323 East Main Street 119-0012-0259 Contributing

Ca. 1920 one-story Bungalow with a concrete block foundation, stretcher-bond brick exterior, side-gabled roof covered with asphalt shingles, exterior brick chimney, partial-width porch with a gable-front roof, tapered brick piers, a closed brick-wall rail, ca. 2000 stucco in the gable field, Colonial Revival brick pediment surround, original single-light glass-and-wood door, replacement fixed picture windows; faux-brick wall, driveway, walkway, retaining wall.

United States Department of the Interior  
National Park Service

# National Register of Historic Places Continuation Sheet

Marion Historic District Boundary Increase  
Marion, Smyth County, Virginia

Section number 7 Page 18

---

One-story, ca. 1920, frame vinyl-sided garage with a hipped roof covered with wooden shingles. Contributing

115.) 326 East Main Street 119-0012-0286 Contributing

Two-story, frame, three-bay, gable-front-and-wing house built ca. 1905 has a brick foundation, gable roof of asphalt shingles, weatherboard siding, interior brick chimney, one-story shed-roofed porch with original Tuscan columns and a railing with milled balusters, rock-faced concrete piers with lattice panels in between, original glass-and-wood vestibule, one eight-light glass-and-wood door, original single-light glass-and-wood door, original one-over-one sash windows, gable returns, Palladian vent window, one-story, side, sun porch; original poured concrete retaining wall, concrete walkway and steps with railings of rock-faced concrete blocks; driveway.

116.) 350 East Main Street 119-0012-0287 Contributing

Ca. 1910, one-story, gable-front-and-wing house with an asphalt-shingled roof, an interior central brick chimney, vinyl siding, brick foundation covered with concrete contoured to resemble rocks, one-over-one replacement vinyl sash windows, original six-over-six wood-sash windows, partial-width porch has ca. 1980 wrought iron metal posts and railing, ca. 1960 nine-light glass-and-wood door; poured concrete wall, concrete block wall, series of steps.

One-story, ca. 1970, garage apartment with vinyl siding, side-gabled asphalt-shingled roof, and one-over-one vinyl windows.  
Non-contributing

117.) 403 East Main Street 119-0012-0260 Contributing

Two-story, three-bay, Colonial Revival house with a poured concrete foundation, stretcher-bond brick exterior, side-gabled roof covered with asphalt shingles, paired six-over-six wooden sash windows with brick sills, exterior end brick chimney, partial-width one-bay porch with a shed roof with a central gabled pediment and Tuscan columns, large gabled pediment with stucco infill, one-story window with a balcony roof; rear, shed-roofed wing; driveway, sidewalk.

118.) 404 East Main Street 119-0012-0288 Non-contributing

Ca. 2007, two-story, three-bay house with a side-gabled standing-seam metal roof, vinyl siding, textured concrete block foundation, four-over-four and six-over-six vinyl-sash windows, gable-front entry porch with wood posts, rear, shed-roofed porch with vinyl columns; series of steps, concrete walls.

119.) 407 East Main Street 119-0012-0261 Contributing

Ca. 1920, one-story Bungalow with an interior brick chimney, poured concrete foundation, stretcher-bond brick exterior, gable-front roof covered with asphalt shingles, knee-brace brackets, gable dormers, originally full-width porch partially enclosed ca. 1995, original square brick posts are intact under the porch's hipped roof; entrance has an original single-light glass-and-wood door, three original four-over-one wood-sash windows in gable field; ca. 1995 replacement one-over-one vinyl-sash windows on ground floor; asphalt driveway, walkway.

One-story, ca. 1920 gable-front garage with a brick exterior and an overhead track wood paneled door. Contributing

120.) 415 East Main Street 119-0012-0262 Contributing

One-and-a-half-story, ca. 1920 Bungalow with a poured concrete foundation, stretcher-bond brick exterior with basket-weave band, gabled roof with asphalt shingles, original four-over-one wood-sash windows, interior brick chimney, exterior end brick chimney; partially enclosed, full-width, shed-roofed porch with brick posts, single-light transom and sidelights and a storm door, large dormer with vinyl siding; rock wall, gravel driveway, concrete block wall; walkway.

121.) 416 East Main Street 119-0012-0289 Contributing

One-and-a-half-story, three-bay, ca. 1910 Bungalow with a complex roof of asphalt shingles, two interior brick chimneys, a concrete foundation, a stretcher-bond brick exterior, one-over-one wood- and vinyl-sash windows, shed dormers, wrap-around

United States Department of the Interior  
National Park ServiceNational Register of Historic Places  
Continuation SheetMarion Historic District Boundary Increase  
Marion, Smyth County, VirginiaSection number 7 Page 19

porch has metal fluted half columns on brick piers and a ca. 1990 railing with turned-wood balusters; hyphen attaches a rear ca. 1980 addition; walkway with steps.

122.) 417 East Main Street 119-0012-0311 Non-contributing  
Ca. 1970 side-gabled vinyl-sided house with pairs of sliding one-light vinyl windows and two one-light paired sliding glass doors on the façade with an asphalt incised porch with metal posts and an asphalt-shingled roof.

123.) 419 East Main Street 119-0012-0312 Contributing  
Behind the houses lining East Main Street is a cemetery established ca. 1887. A Virginia Civil War Trails marker at the head of the driveway gives biographical information about William Elisha Peters, an officer with the Second Virginia Cavalry, CSA and professor, whose body was buried here in 1906. Other grave markers bear the names of Pendelton, Campbell, Fairman, Sheffey, Haller, Peters, and Preston; some of these family names now double as local street names. An original wrought-iron fence encloses the approximately 40 by 40 foot plot and its approximately 20 markers. About a quarter of the markers are modern. Many of the historic markers are in good repair, while a few are broken and some are likely missing.

124.) 421 East Main Street 119-0012-0263 Contributing  
Ca. 1940, one-and-a-half-story Tudor Revival house with a concrete foundation, stretcher-bond brick exterior, cross-gabled roof with asphalt shingles, exterior brick chimney on the façade, original four-over-one wood-sash windows, other wood-sash windows with a diamond-light pattern, integral porch has arched openings, high-pitched gable fields have arched, diamond-light, wood casement windows; slightly projecting entrance vestibule with a gable-front roof and original multiple-light octagonal-pane glass-and-wood door, rear cross-gabled wing with a basement garage with an overhead-track wood paneled door with a row of glass panes at its top; screening fence around HVAC, brick path.

125.) 427 East Main Street 119-0012-0264 Contributing  
One-and-a-half-story, three-bay, ca. 1925 Bungalow with a concrete foundation, stretcher-bond brick exterior, side-gabled roof with asphalt shingles, one-over-one wood sash windows, interior brick chimney, full-width, three-bay porch with tapered brick posts, original single-light glass-and-wood door and single-light sidelights and transom, bay window, large gable dormer with wood-shingle siding and eave brackets; main roof also has brackets. Between the basement and the ground floor is a brick soldier course; shed-roofed, enclosed, side entrance with an original single-light glass-and-wood door; driveway, walkway, chain-link fence encloses back yard.

126.) 503 East Main Street 119-0012-0265 Contributing  
One-and-a-half-story, three-bay, ca. 1935 Bungalow with a concrete foundation, stretcher-bond brick exterior, side-gabled roof with asphalt shingles, two interior brick chimneys, original three-over-one wood-sash windows, some with metal awnings, partial-width, gable-front porch with arched openings, original three-vertical-light glass-and-wood arched door. Between the basement and ground floor is a brick soldier course; rear garage bay with a side-hinged wooden door is flanked by curved brick retaining walls, gravel driveway, concrete parking area, concrete walkway painted to resemble slate.

Ca. 1935 shed of concrete block construction with an original five-panel wood door and gable-front metal roof. Contributing

127.) 506 East Main Street 119-0012-0290 Contributing  
One-and-a-half-story, three-bay, ca. 1925, brick Bungalow with a concrete foundation, stretcher-bond brick exterior, interior brick chimney, six-over-one vinyl-sash windows, side-gabled roof of asphalt shingles, partial-width, integral, two-bay porch with tapered brick posts and a closed brick railing, ca. 1970 wood door, shed dormer with vinyl siding; exterior, wooden staircase with a canopy cover leading to the upper floor entrance; at the rear of the staircase is a wooden ramp; rear, vinyl-sided addition; asphalt driveway, rock wall, walkway.

128.) 512 East Main Street 119-0012-0291 Contributing



United States Department of the Interior  
National Park Service

# National Register of Historic Places Continuation Sheet

Marion Historic District Boundary Increase  
Marion, Smyth County, Virginia

Section number 7 Page 20

Ca. 1925, two-story, three-bay Bungalow with a side-gabled roof with asphalt shingles, concrete foundation, stretcher-bond brick exterior, four-over-one vinyl sash windows, second floor addition with vinyl siding, partial-width two-bay porch with brick posts and a closed brick rail, an original three-light glass-and-wood door with vertical two-light sidelights; porte cochere with a hipped roof and brick posts; pedestrian entrance with an original vertical-three-light glass-and-wood door; low brick wall, asphalt drive, ca. 1990 brick path, garden beds line the fence, driveway, path, and porch.

Original three-bay garage of bricks and concrete blocks with a hipped metal roof, a ca. 1940 glass-and-wood paneled overhead-track, and a sliding-track door. Contributing

129.) 513 East Main Street                      119-0012-0266                      Contributing

Ca. 1925 two-story, four-bay Bungalow with a concrete foundation, stretcher-bond brick exterior, complex roof with asphalt shingles, one-over-one vinyl-sash windows, interior brick chimney, one-story, four-bay porch with tapered brick posts and a closed brick-wall rail and a chamfered projecting bay, single-light glass-and-wood door with a laurel-wreath motif and a single-light transom; asphalt driveway, walkway.

Behind the house is a ca. 1940 one-story brick hip-roofed garage with an original overhead-track door. Another bay has an opening refitted to accommodate ca. 1980 metal paneled double doors. Contributing

130.) 522 East Main Street                      119-0012-0292                      Contributing

Ca. 1920 two-story Colonial Revival house with a concrete foundation, stretcher-bond brick exterior, asphalt-shingled hipped roof, central interior brick chimney, second floor six-over-six wood-sash windows with metal awnings, central pedestrian entrance with an original six-light glass-and-wood door with a gabled canopy and brackets flanked by garage bays with replacement doors.

131.) 523 East Main Street                      119-0012-0267                      Non-contributing

Ca. 1980 brick Ranch house with vinyl windows, a side-gable roof, a Colonial Revival two-bay porch, and a metal door with a lunette. The lot is encompassed by a much older stone retaining wall with entrance steps; driveway.

132.) 524 East Main Street,                      119-0012-0293                      Contributing

Ca. 1920, two-story house with a side-gabled roof with asphalt shingles, two interior brick chimneys, one-over-one wood-sash windows, a concrete foundation, integral porch with arched openings, a brick post, and a closed brick rail, an original single-light glass-and-wood door and a small vestibule with a twelve-light glass-and-wood exterior door flanked by four-light sidelights, a gabled dormer with vinyl siding; walkway. The house is located behind 522 East Main, and is accessed via an extended asphalt drive leading to Main Street.

Ca. 1920 brick garage with hipped roof and original wood paneled, six-light garage door. Contributing

133.) 528 East Main Street,                      119-0012-0294                      Contributing

One-and-a-half-story, three-bay, ca. 1935 Bungalow with a concrete foundation, Flemish-bond brick exterior, side-gable roof of asphalt shingles, and knee-brace brackets, full-width integral partially enclosed porch with brick posts, an original nine-light glass-and-wood door flanked by half-height six-light sidelights over wood panels, a seven-light transom, original one-over-one wood sash windows, gable dormer with vinyl siding, enclosed and vinyl-sided rear porch; asphalt drive.

Original two-bay brick garage with a metal hipped roof and original glass-and-wood panel doors. Contributing

134.) 531 East Main Street,                      119-0012-0268                      Contributing

One-and-a-half-story, three-bay, ca. 1925 Bungalow with a cut-stone foundation, stretcher-bond brick-and-stucco exterior, side-gable roof with asphalt shingles, knee-brace eave brackets, one-over-one and six-over-six replacement vinyl-sash windows, shed-roofed porch with arched openings, original single-light glass-and-wood door and single-light sidelights and transom, large gabled

United States Department of the Interior  
National Park ServiceNational Register of Historic Places  
Continuation SheetMarion Historic District Boundary Increase  
Marion, Smyth County, VirginiaSection number 7 Page 21

dormer, wood, diamond casement windows in side gables, rear, one-story shed-roofed addition with vinyl siding; asphalt driveway, walkway.

Original brick one-story garage with a ca. 1970 metal paneled door. Contributing

135.) 534 East Main Street, 119-0012-0295 Contributing  
One-and-a-half-story, three-bay, ca. 1930 Tudor Revival house with a concrete foundation, stretcher-bond brick exterior, exterior brick chimney, original eight-over-eight and six-over-six wood-sash windows, and gable-front roof with asphalt shingles and monitors, shed-roofed screened porch with brick posts, a closed brick railing, and a street-facing screen door, a gable-front projecting entry bay with a recessed original three-light glass-and-wood arched door and an original arched screen door; asphalt drive, walkway.

136.) 540 East Main Street, 119-0012-0296 Non-contributing  
One-story, 1986, Ranch house with a concrete foundation, stretcher-bond brick exterior, side-gable roof of asphalt-shingles, and original one-over-one wood-sash windows; rear deck, partial-width porch on the facade.

137.) 546 East Main Street, 119-0012-0313 Contributing  
One-and-a-half-story, four-bay, ca. 1940, side-gabled house with an asphalt-shingled roof, rusticated-stone exterior, exterior stone chimney, replacement single-light fixed windows, side porch with tapered stone piers and horizontal-wood-board siding in the gable field, projecting gable-roofed entrance bay on façade with a recessed original six-square-light glass-and-wood door; rear one-story, original garage bay with a refitted entrance with double metal paneled doors; stone path, curved path to rear.

138.) 552 East Main Street, 119-0012-0314 Contributing  
Ca. 1915, frame house with an asphalt-shingled complex roof, two interior brick chimneys, vinyl siding, and a foundation covered with concrete grooved to appear rock faced, partial-width porch with a gazebo component and milled wood posts and shingles, an original single-light glass-and-wood door, one-story sunroom wing, hipped dormer, scalloped wooden shingles in gable fields; stone walkway, gravel driveway.

Ca. 1940 garage with vinyl siding. Contributing

139.) 604 East Main Street, 119-0012-0315 Contributing  
One-and-a-half-story, three-bay, ca. 1915 gable-front-and-wing house with a concrete block foundation, vinyl siding, complex roof of asphalt shingles, one-over-one wood-sash windows with metal windows, two interior brick chimneys, partial-width porch with a gazebo component, turned wood posts, and decorative spindles, a single-light glass-and-wood door, a one-story bay window; rear, one-story porch, parking bay with wood posts, walkway, asphalt driveway.

Ca. 2000 metal storage shed with a metal gambrel roof. Non-contributing

140.) 610 East Main Street, 119-0012-0316 Contributing  
Ca. 1925, one-story Bungalow with a concrete block foundation, a stretcher-bond brick exterior, an interior central brick chimney, two exterior brick chimneys, a complex roof of asphalt shingles, one-over-one vinyl-sash windows, partial-width three-bay porch with an arched gable pediment and an alternating brick pattern, which appears to replace an earlier porch, an original three-vertical-light glass-and-wood door; ca. 1950 rear L wing has wood siding and a picture window; asphalt drive.

Ca. 1960 frame carport abuts 610 Tazewell Street. Non-contributing

141.) 611 East Main Street, 119-0012-0269 Contributing  
One-and-a-half-story, three-bay, ca. 1925 Bungalow with a concrete block foundation, stretcher-bond brick exterior, side-gabled roof with asphalt shingles and eave brackets, exterior brick chimney, original four-over-one wood-sash windows with concrete

United States Department of the Interior  
National Park ServiceNational Register of Historic Places  
Continuation SheetMarion Historic District Boundary Increase  
Marion, Smyth County, VirginiaSection number 7 Page 22

sills, full-width three-bay porch with brick posts and a closed brick rail, an original multiple-light Craftsman glass-and-wood door with multiple-light sidelights, large gabled dormer with vinyl siding and vinyl-sash one-over-one windows; rear, ca. 1970 wood deck, concrete parking area, asphalt driveway.

142.) 615 East Main Street, 119-0012-0270 Contributing  
One-and-a-half-story, three-bay, ca. 1925 Bungalow with a concrete foundation, stretcher-bond brick lower exterior and vinyl upper exterior, side-gable roof with asphalt shingles, interior central chimney, one-over-one vinyl-sash windows, a full-width three-bay porch with tapered wood posts on brick piers, original single-light glass-and-wood door with single-light sidelights and transom, gabled dormer with vinyl siding, brackets at eaves, wood diamond casement windows in side gable fields; rear, ca. 1990 wooden deck, wood picket fence, walkway, gravel drive.

143.) 621 East Main Street, 119-0012-0271 Contributing  
One-and-a-half-story, three-bay, ca. 1925 Bungalow with a concrete foundation, stretcher-bond brick exterior, side-gable roof with asphalt shingles, original four-over-one wood-sash windows, exterior end brick chimney, interior central brick chimney, two-bay full-width porch with brick posts has a partial gable-front roof and a partial wooden pergola cover, original three-light glass-and-wood door, eaves have brackets, hip-roofed porte cochere with exposed rafter tails, one-over-one vinyl sash windows; gravel driveway; walkway.

144.) 627 East Main Street, 119-0012-0272 Contributing  
One-and-a-half-story, three-bay, ca. 1925 Bungalow with a concrete foundation, stretcher-bond brick exterior, gable-front roof with a ca. 1990 metal covering, six-over-one vinyl-sash windows, exterior brick chimney, hip-roofed three-bay porch with vinyl-clad posts on brick piers, 15-light glass-and-wood door with a storm door, knee-brace brackets at eaves; rear, ca. 2000 wooden deck, gable dormers with vinyl siding; wall, concrete driveway, brick walkway.

145.) 631 East Main Street, 119-0012-0317 Contributing  
Ca. 1925, one-story gable-front-and-wing Tudor Revival house with a concrete foundation, stretcher-bond brick exterior, gable-on-hip roof with asphalt shingles, two interior brick chimneys, original six-over-six wood-sash windows, gable-front façade has a single-bay garage with an original wood paneled overhead-track door with half timbering and stucco in the gable field, side rear entrance with a metal canopy, small enclosed vestibule with a ca. 1980 four-light four-panel glass-and-wood door, two hipped dormers; railroad ties retaining wall, asphalt driveway, stone path, wall.

146.) 300 North Main Street, 119-0012-0318 Non-contributing  
Ca. 1990, one-story Chevron and Food Mart has institutional architecture and a textured concrete block exterior with metal siding near the top in imitation of a flat roof with Mansard roofline, metal single-pane windows with slated upper panes that create a greenhouse appearance. Its double metal doors each have one light. A flat canopy covers the pump "island" west of the building; walkway, asphalt paving.

147.) 311 North Main Street, 119-0012-0319 Contributing  
Ca. 1915, two-story, eight-bay building with two storefronts, a flat roof with a parapet, a concrete foundation, a seven-course American-bond brick exterior, one-over-one vinyl windows with soldier-course lintels. Both storefronts are altered; one retains an original single-light wooden door, the other, a ca. 1940 wood-and-glass-panel door. The central stairwell entrance has a ca. 1925 Craftsman door; asphalt-paved area.

148.) 315 North Main Street, 119-0012-0320 Contributing  
Ca. 1915 two-story, five-bay building with a concrete foundation, stretcher-bond brick veneer with a tapestry-brick insert, two arched openings below the roof line, flat roof, seven-course American-bond brick exterior and original metal casement windows on the side, second floor has ca. 1970 metal one-over-one and fixed windows, one of two storefronts is enclosed, and in the other is an original single-light wooden door. The building currently houses Francis Brothers Hardware.

United States Department of the Interior  
National Park Service

# National Register of Historic Places Continuation Sheet

Marion Historic District Boundary Increase  
Marion, Smyth County, Virginia

Section number 7 Page 23

- 149.) 320 North Main Street, 119-0012-0321 Non-contributing  
At this address is the Highlands Fellowship, housed in a two-story ca. 1945 house with ca. 2005 exterior materials including vinyl siding, two-light sliding vinyl windows and louvered shutters, and a front-gabled roof with asphalt shingles. The central entry has a wooden single-light door, and a pair of single-light metal display windows is on each side. On the façade is a full-width concrete ramp with a metal rail. Asphalt paving is on both sides of the building.
- 150.) 323 North Main Street, 119-0012-0322 Contributing  
One-and-a-half-story, three-bay, ca. 1920 Bungalow with a gabled roof of asphalt shingles, stretcher-bond brick exterior, concrete foundation, original Craftsman door and sidelights, original four-over-one wood sash window remains on the gabled façade dormer, a three-bay porch with brick posts, exterior end brick chimney, interior brick chimney, ca. 1970, two-story wooden deck, rear, shed-roofed addition; poured-concrete lot, iron fence, paved drive, walkway, garden beds.
- 151.) 327 North Main Street, 119-0012-0323 Contributing  
Ca. 1920 one-story, two-bay house with six-over-six wooden windows, a single-light door with a metal awning, a metal gable-front roof, a seven-course American-bond brick exterior, a concrete foundation, and an interior brick chimney; concrete patio, asphalt lot. This house is located behind 331 North Main.
- 152.) 331 North Main Street, 119-0012-0324 Contributing  
One-and-a-half-story, three-bay, ca. 1920 Bungalow with a concrete foundation, asphalt-shingled gable-front roof, stretcher-bond brick exterior with stucco in the gable field, recessed bay, wrap-around porch with wooden Ionic columns on brick piers, three-over-one and one-over-one wooden sash windows with metal storm windows, original single-light wooden door with single-light sidelights and a three-part transom, secondary entrance in the recessed bay has an original single-light door, shed-roofed dormer, a central interior brick chimney; paved driveway leads to the carport, brick walkway, wooden fence.  
A ca. 1960 gable-front carport. Non-contributing
- 153.) 340 North Main Street, 119-0012-0325 Non-contributing  
At this address is the ca. 2005 one-story USDA Service Center with a textured concrete-block-and-brick exterior, parapet, flat roof, concrete decorative finishes, multiple entrances with metal single doors, and metal windows with three stacked panes. A central concrete porch has posts; sidewalk is paved with asphalt.
- 154.) 347 North Main Street, 119-0012-0326 Non-contributing  
Ca. 1980 one-story building with Hardee's franchise architecture with a concrete foundation, concrete-and-glass exterior, and flat roof with a shed cornice of asphalt shingles. Asphalt surrounds the building.
- 155.) 400 North Main Street, 119-0012-0327 Non-contributing  
Ca. 1970 one-story building housing Smokey's Bar-B-Que with a shed roof with a parapet, simulated board and batten siding on the façade, wood siding on the side elevations, a nine-light front door, one-over-one vinyl windows; concrete porch with simple wood posts and tables, gravel parking area.
- 156.) 405 North Main Street, 119-0012-0328 Contributing  
Two-story, frame, three-bay Queen Anne dwelling built ca. 1900 has a brick foundation, gable roof of asphalt shingles, exterior of vinyl siding, shed-roofed entry porch with original milled columns, milled railing, and spindled frieze, porch eave brackets, two entrances have original multiple-light glass-and-wood doors, ca. 2000 six-over-six and four-over-four vinyl sash windows, rectangular louvered vents in gable fields; rear, one-story wing with an exterior wall brick flue; concrete walkway, gravel driveway.  
Ca. 1920 frame garage with a crimped-metal gable roof, weatherboard siding, poured concrete foundation, exposed eave rafters and ca. 1980 hinged wood doors. Contributing

United States Department of the Interior  
National Park ServiceNational Register of Historic Places  
Continuation SheetMarion Historic District Boundary Increase  
Marion, Smyth County, VirginiaSection number 7 Page 24

- 157.) 411 North Main Street, 119-0012- 0329 Contributing  
One-story, frame, three-bay gable-and-wing dwelling built ca. 1895, a brick foundation, two interior brick chimneys, a gable roof of asphalt shingles, an exterior of weatherboard, partial-width shed-roofed porch with ca. 1990 wood posts and wood railing, porch eaves have added wood gutter support brackets and two original milled brackets, original two-light-and-two-panel glass-and-wood door, original six-over-six wood sashes with cornices, original bay window with three six-over-six wood-sash windows, below which are inset rectangular wood panels, original saw-tooth valances, saw-tooth shingles in gable fields, wing posts, and cross bracing; concrete retaining wall, concrete walkway, gravel driveway.
- 158.) 417 North Main Street, 119-0012-0330 Contributing  
Two-story, three-bay, frame gable-front dwelling built ca. 1910 has a poured concrete foundation, a gable roof of asphalt shingles, an interior brick chimney, exterior of vinyl siding, full-width shed-roofed porch with original Tuscan columns and a solid wood railing, single-light glass-and-wood door of stained glass has green and brown glass depicting flowers and cattails, transom above has a similar design, and the entrance also has stained glass sidelights; original one-over-one wood sashes, shed dormers with two one-over-one wood-sash windows. The basement level also has one-over-one wood-sash windows; asphalt driveway, concrete walkway.
- 159.) 422 North Main Street, 119-0012-0331 Non-contributing  
Ca. 1970 former Texaco service station currently housing U-Haul Rentals. The building has a flat roof with a shingled simulated Mansard roofline, brick exterior, and a corner office. Attached to the façade is an extensive flat canopy. West of the building is a standing sign.
- 160) 427 (A) North Main Street, 119-0012-0332 Contributing  
Two-story, six-bay, brick, commercial building built ca. 1930 has a poured concrete foundation, flat asphalt roof, exterior of six-course common bond brick, ca. 1990 wood handicapped-access ramp leading to a central entrance, ca. 1995 paired glass-and-wood doors flanked by art-glass windows, second floor windows are ca. 1995 six-over-six vinyl-sash design; three bays of the building have original structural-glass-block windows, original single-light glass-and-wood door; original loading dock bay with a multiple-light glass-and-wood overhead-track door and recessed bay with a ca. 1995 wood deck and glass-and-wood doors on side elevation. Windows and doors on the rest of this elevation also have ca. 1995 vinyl designs.
- 161.) 427 (B) North Main Street, 119-0012-0333 Contributing  
Two-story, three-bay, brick, commercial building built ca. 1940 has a concrete foundation, flat asphalt roof, exterior of tan stretcher-bond bricks, an original single-light glass-and-wood door and a rectangular single-light transom, Art Moderne surround of structural-glass blocks with curved corners, original brick sills, ca. 1995 art glass and two-light vinyl design, ca. 1995 bay window of multiple-light glass design above entrance; concrete loading dock sheltered by a large bracketed shed roof on side. Leading to the loading dock are five doors of original wood hinged and double door paneled design. Windows on this elevation are original 16-light steel hinged design. At the rear is a large brick chimney in a one-story brick wing.
- 162.) 437 North Main Street, 119-0012-0334 Contributing  
The J. B. Rhea Building, 1905, is a two-story brick four-bay commercial building with a brick foundation, exterior of stretcher-bond bricks, sloping flat roof of asphalt; storefront was altered ca. 1980 with wood paneled bulkheads, a recessed entrance with an aluminum-and-glass door, and wood panels over the transom, with some original display windows, some ca. 2000 glass-and-wood designs. The storefront is framed by brick piers with capitals of egg-and-dart brick. The upper façade is original and has four one-over-one wood sash windows and arched single-light transoms; stone-and-brick cornice with modillion blocks and egg-and-dart brick between floors. The windows have arched three-course sailor-course brick connecting to egg-and-dart brick panels. Above the windows is a corbelled brick cornice with egg-and-dart and a stone parapet wall. Ca. 1960 side elevation balcony with two original glass-and-wood doors; opposite side has three arched windows on the first story and 10 arched one-over-one wood-sash windows on the second story.

United States Department of the Interior  
National Park ServiceNational Register of Historic Places  
Continuation SheetMarion Historic District Boundary Increase  
Marion, Smyth County, VirginiaSection number 7 Page 25

163.) 440 North Main Street, 119-0012-0335 Contributing  
Two-story, brick, five-bay commercial building built ca. 1940 has a poured concrete foundation, flat asphalt roof, exterior of stretcher-bond bricks, central entrance with original double single-light glass-and-wood doors, large rectangular transom, concrete canopy, projecting concrete pier with open rectangular panels. The storefront has original aluminum-and-glass display windows and concrete bulkheads. Windows in the upper façade have original paired twelve-light steel hinged designs with brick sills. On the side elevations the window bays have original structural-glass blocks; garage bay with an original 20-panel overhead-track door.

Behind the building is a substantial, ca. 1950 metal shed. Contributing

164.) 504 North Main Street, 119-0012-0336 Non-Contributing  
One-and-a-half-story, two-bay. ca. 1915 building with a gable-front roof of V-crimp metal, a concrete foundation, and a five-course American-bond brick exterior, altered façade has a concrete-block foundation, a sheet-metal exterior, and ca. 1980 glass-and-metal doors; one-story loading-dock is on side elevation has a ca. 1950 glass-and-wood paneled garage door; asphalt lot; concrete retaining wall, concrete pad, asphalt drive.

Ca. 1940 concrete-block garage with two original glass-and-wood paneled bay doors. Contributing

165.) 512 North Main Street, 119-0012-0337 Contributing  
Ca. 1950, four-bay, three-story building with a flat roof, variation on six-course Flemish-bond brick exterior, concrete foundation, original display windows, multiple-light casement windows, second-floor six-light metal casement windows, third-floor ca. 1980 vinyl sliding windows, ca. 1980 glass-and-metal double doors, hip-roofed canopy with a metal covering across the façade. The building presently houses Dean's Bikes; asphalt lot and drives, wooden fence.

166.) 516 North Main Street, 119-0012-0338 Contributing  
Ca. 1920, two-story, two-bay apartment building with a flat roof with a parapet, concrete foundation, and six-course American-bond brick exterior. The altered first floor has aluminum siding infill, and the second floor has one-over-one vinyl windows; ca. 1980 wooden landing and staircase, and on the western elevation is a ca. 1950 concrete-block shed-roofed addition. Corbelling is below the roofline; driveway, wood fence.

167.) 517 North Main Street, 119-0012-0339 Contributing  
Two-story, five-bay, ca. 1950 commercial building with a concrete foundation, ca. 2005 aluminum windows, flat roof, stretcher bond brick exterior, glass-and-metal door. Manufacturers made the first Mountain Dew in this building; asphalt parking lot.

168.) 520 North Main Street, 119-0012-0340 Non-contributing  
Ca. 1960, two-story, front-gabled, commercial building housing Century Heating and Air Conditioning and Rector Supply Company has a lower brick and an upper vinyl-sided façade, concrete-block sides, an asphalt-shingled roof, exterior brick chimney, three metal two-over-two windows, central pair of single-light metal doors; a single-light metal window is on each side. Above the storefront is a metal hipped awning; attached, two-story, concrete-block garage with a shed roof; upper vinyl siding and pairs of one-over-one vinyl windows; and a lower concrete-block exterior with six-light metal windows, a solid pedestrian door, and a paneled two-light car door. Asphalt paving a chain-link fence, garbage dumpster.

169.) 534 North Main Street, 119-0012-0341 Contributing  
At this address is the ca. 1930 Tudor Revival one-and-a-half-story Allstate-Steve Demit building with a brick exterior, side-gabled roof with concrete shingles and two hipped dormers, interior brick chimney with pots, three façade bays, integral porch one-over-one vinyl windows, six-over-six wooden window, original six-light wooden door; wooden ramp, asphalt parking area and drive, standing sign, chain-link fence.

170.) 651 North Main Street, 119-0012-0342 Contributing

United States Department of the Interior  
National Park Service

# National Register of Historic Places Continuation Sheet

Marion Historic District Boundary Increase  
Marion, Smyth County, Virginia

Section number 7 Page 26

The one-story Norfolk and Western train station has a brick exterior; concrete foundation, hipped roof with concrete shingles, four hipped façade dormers with six-light wooden windows, exposed rafter tails, interior brick chimney, metal finials, large eave to wall brackets; four entrances, one has an arched single-light ca. 2000 transom and original single-light wooden doors and the others have original eight-light wooden transoms and original glass-and-wood paneled doors. Also on the façade are 10 windows of various sizes with original multiple-over-single-light wooden sashes. Currently occupying the building are Spectrum Design; Shultz, Kiser, and Associates; and Details Hair and Tanning. On one side of the station is North Main Street and on the other are the railroad tracks.

171.) 703 North Main, 119-0012-0375 Contributing  
Ca. 1945 two-story Dutch Colonial Revival house with a gambrel roof of asphalt shingles, concrete foundation, one-over-one vinyl windows, stretcher-bond brick exterior, ca. 1990 metal-and-glass door, gambrel entrance canopy with vinyl-clad columns; asphalt lot.

Behind the main building is a ca. 1945 gambrel-roofed shed with a brick lower and vinyl upper exterior. Contributing

172.) 709 North Main Street, 119-0012-0343 Contributing  
One-and-a-half-story, four-bay, ca. 1920 Bungalow with a concrete foundation, stretcher bond brick exterior, gabled roof of asphalt shingles, exterior end brick chimney, gabled dormer, original three-over-one wood-sash windows, one-over-over vinyl replacements, two Craftsman doors, full-width three-bay porch with brick posts. Steps, sidewalk, asphalt drive.

173.) 715 North Main Street, 119-0012-0344 Contributing  
Ca. 1925 two-story two-bay multiple-gabled house with asphalt roofing shingles, a gabled dormer, two interior brick chimneys, a concrete foundation, a lower brick and upper board and batten exterior, one-over-one vinyl windows, projecting bay window, half-width wrap-around porch with tapered posts on brick piers. Stairs lead to the sidewalk, asphalt lot, railroad-tie wall, driveway.

174.) 224 Maple Street, 119-0012-0345 Contributing  
Ca. 1940 one-story, three-bay, brick, front-gabled house with asphalt roofing shingles, one interior chimney, concrete foundation, asbestos shingles in gable fields, paired one-over-one metal windows, ca. 1950 wooden door with three lights, wooden porch with an extended gable roof, brick half posts with wooden trellis-like uppers and a wooden rail, shed-roofed wooden porch with similar elements.

Ca. 1970 metal Gambrel-roofed shed. Non-contributing

175.) 230 Maple Street, 119-0012-0346 Contributing  
Ca. 1915 one-story, three-bay cottage has a stuccoed foundation, asbestos shingles, side-gabled asphalt-shingled roof with one interior brick chimney, central entry with a ca. 1960 door and covered transom and sidelights, original two-over-two wooden windows, three-bay wooden porch with shed roof and wooden posts and rail, projecting bay window with brackets and wooden detailing at its roofline In the porch foundation are six-light original wooden basement windows.

176.) 302 Maple Street, 119-0012-0347 Contributing  
Ca. 1945 brick, three-bay, one-story house with a concrete-block foundation, brick exterior with asbestos shingles in the gable fields, front-gabled asphalt-shingled roof with a central interior brick chimney, one-over-one metal windows, original, six-light wooden door, two-bay front-gabled concrete porch with brick half posts with wooden trellis-like uppers and rail, ca. 1970 louvered shutters on the windows. The house is a mirror replica of its neighbor at 306 Maple Street; swing set, gravel drive, wood-board fence.

177.) 306 Maple Street, 119-0012-0348 Contributing  
Ca. 1945 one-story, three-bay, brick house with a front-gabled asphalt-shingled roof with a central interior brick chimney, asbestos shingles in gable fields, concrete-block foundation, central entry with ca. 1990 storm door, one-over-one vinyl windows,

United States Department of the Interior  
National Park Service

# National Register of Historic Places Continuation Sheet

Marion Historic District Boundary Increase  
Marion, Smyth County, Virginia

Section number 7 Page 27

two-bay concrete porch with brick half posts with wooden trellis-like uppers and rail. The house is a mirror replica of its neighbor at 302 Maple Street; stone retaining wall, gravel driveway.

Original shed-roofed wood-board shed on a pier foundation of concrete blocks. Contributing

178.) 309 Maple Street, 119-0012-0349 Contributing  
Two-story, three-bay, ca. 1900 Central Hall house with a gable roof of metal shingles, stone-pier-with-brick-infill foundation, vinyl siding, interior end brick chimney covered with stucco, a central entrance with a ca. 1980 metal panel door and single-light sidelights, hipped dormer with one-over-one vinyl windows, shed-roofed porch with ca. 2000 wooden floor and posts, rear, one-story T addition with a gable roof covered in V-crimp metal and an interior brick chimney; rear yard is enclosed by a metal fence.

179.) 315 Maple Street, 119-0012-0350 Contributing  
Ca. 1900 two-story three-bay Central Hall house with a stone-and-brick-pier foundation, vinyl siding, side-gable roof covered with V-crimp metal, and two interior stuccoed chimneys, original six-over-six wood sash windows, enclosed one-story porch with one-over-one wood sash windows and a ca. 1930 three-light wood paneled door. On the rear elevation is a one-story gable-roofed addition with an additional chimney.

Ca. 1940 concrete-block garage with a metal shed roof. Contributing

180.) 316 Maple Street, 119-0012-0351 Contributing  
Ca. 1915 one-story three-bay gable-front dwelling with an asphalt-shingled roof, concrete-block foundation, vinyl siding, central interior brick chimney, six-over-six wood sash windows, a wrap-around porch with vinyl-clad posts. The house is set back from the street and accessed by a gravel drive; stone retaining wall, ca. 2000 steps.

181.) 320 Maple Street, 119-0012-0352 Contributing  
Ca. 1915 one-story three-bay pyramid square house with a concrete foundation, stucco exterior, central interior brick chimney, hipped roof of asphalt shingles, six-over-six vinyl sash windows, a half-width porch with a hipped roof and ca. 1980 wood posts and spindle railing; stepping-stone path, gravel drive, railroad-tie retaining wall.

Ca. 1915 concrete-block shed with stucco and a side-gable roof of asphalt shingles. Contributing

182.) 325 Maple Street, 119-0012-0353 Non-contributing  
One-story three-bay Antioch Baptist Church building, constructed in 1986. The building has a concrete-block foundation, a stretcher-bond-brick-and-concrete-block exterior, a gable-front roof of asphalt shingles, wooden entrance deck and ramp, shed-roofed addition is on the rear elevation.

183.) 326 Maple Street, 119-0012-0354 Contributing  
Ca. 1915 one-story three-bay pyramid square house with a concrete-block foundation, asbestos siding, an interior central brick chimney, an interior rear chimney, hipped roof of asphalt shingles, ca. 1950 diagonal-three-light wooden door, ca. 1950 two-over-two wood sash windows, half-width porch with milled post; stone-lined landscaped beds, stone-and-concrete path.

184.) 332 Maple Street, 119-0012-0355 Contributing  
One-story, two-bay, ca. 1925 brick Tudor Revival house with a cross-gabled standing-seam metal roof, two exterior brick chimneys, projecting gabled bay with pair of ca. 1960 metal one-over-one windows with a metal awning, original six-light wooden door, integral concrete porch with a post and a solid rail, rear, shed-roofed wing; chain-link fence.

Ca. 1925 small wooden shed is behind the house. Contributing

185.) 319 North Street, 119-0012-0197 Non-contributing



United States Department of the Interior  
National Park Service

# National Register of Historic Places Continuation Sheet

Marion Historic District Boundary Increase  
Marion, Smyth County, Virginia

Section number 7 Page 28

Ca. 1980 two-story, three-bay, Colonial Revival house has a side-gabled asphalt-shingled roof with a stove pipe, eight-over-eight wooden windows, vinyl siding, foundation is not visible, three upper and two lower windows, central entry with paneled door with sidelights and a surround. Attached with a hyphen to the main block is a one-story garage; the hyphen has a one-light paneled door and the garage has two front windows. Both entries include brick stoops; asphalt driveway, brick walkway.

186.) 329 North Street, 119-0012-0198 Contributing  
One-and-a-half-story frame Bungalow built ca. 1925 has a gable roof of asphalt shingles, an interior brick chimney, a poured-concrete foundation, exterior of wood shingles, partial-width integral porch with a corner brick post and a railing with ca. 1980 diagonal bracing, original fifteen-light glass-and-wood door, ca. 1990 one-over-one vinyl sash windows, gabled dormer with a shingle exterior, original shed-roofed wing; ca. 1990 open metal carport, circular asphalt driveway, gravel path.

187.) 335 North Street, 119-0012-0199 Contributing  
One-and-a-half-story ca. 1945 Colonial Revival house has a side-gabled asphalt-shingled roof, interior brick chimney, hipped dormer with two three-over-one windows, aluminum siding, brick foundation, three bays, one-over-one windows, eight-light wooden door with a storm door, gabled porch with a wooden floor, posts, and rail, side wooden deck, a rear two-story component; picket fence, driveway.

188.) 339 North Street, 119-0012-0200 Contributing  
Ca. 1945 one-and-a-half-story Tudor Revival house with a side-gabled asphalt-shingled roof, interior brick chimney, two gabled dormers, six-over-one wooden windows, brick exterior, concrete foundation, and five-bay façade, three-light door with a storm door, diamond-shaped window, arched porch entrance, flagstone patio with iron posts and a metal shed awning; asphalt driveway, curved walkway.

189.) 346 North Street, 119-0012-0201 Contributing  
Two-story brick Colonial Revival house built ca. 1945 has a poured-concrete foundation, gable roof of asphalt shingles, a central brick chimney, exterior of stretcher-bond brick, shed-roofed entry porch with original paired wooden posts, original six-panel door, ca. 1990 six-over-six vinyl sash windows, second-story wall dormers, ca. 1970, rear, one-story, frame wing with a sun porch, secondary entrance with an original glass-and-wood door.

Small, ca. 1965 house with a gable roof and vinyl siding. Non-contributing

Ca. 1965 storage building with a gable roof and vinyl siding. Non-contributing

190.) 103 – 105 Pendleton Street, 119-0012-0356 Contributing  
Ca. 1915 one-story Art Deco warehouse with a six-course American-bond exterior, original metal multiple-light casement windows, interior brick chimney, ca. 1940 Carrara glass above metal-cased display windows, corbelled brick pilasters with stepped caps, entrance with a single-light wooden door, ca. 1980 glass-and-metal doors on side.

191.) 107 Pendleton Street, 119-0012-0357 Contributing  
Ca. 1910 three-story five-bay building with a recessed two-story addition that historically housed the Herb House has a poured-concrete foundation, five-course American-bond brick exterior, flat roof with a parapet, corbelling above first floor and at the roofline, segmental arched windows with one-over-one wooden sashes and concrete sills, original single-light wooden door with a single-light transom; landscaped garden bed, steps.

192.) 109 Pendleton Street, 119-0012-0358 Contributing  
Ca. 1940 five-bay one-story garage with a concrete foundation, concrete-block exterior, flat roof, 25-light metal casement windows with painted sashes and panes, two original, four-light, 16-panel wooden bay doors, central, ca. 1960 wooden door with one square pane. The building is substantially set back from the street; asphalt lot.

United States Department of the Interior  
National Park Service

# National Register of Historic Places Continuation Sheet

Marion Historic District Boundary Increase  
Marion, Smyth County, Virginia

Section number 7 Page 29

- 193.) 111 (A) Pendleton Street, 119-0012-0359 Contributing  
Ca. 1915 three-bay two-story central-hall-plan house has wood-board siding on the façade and rolled-asphalt siding on the side elevation, rock and concrete block foundation, two exterior end stretcher-bond brick chimneys, four-bay one-story porch with a wooden floor and Tuscan columns, six-over-six wood-sash and three-over-one wood-sash windows, entrance has an original two-light two-panel wooden door, three-light sidelights, a three-part transom, and fluted wooden pilasters; rear metal landing and stairs; graveled area, driveway.
- 194.) 111 (B) Pendleton Street, 119-0012-0360 Contributing  
Ca. 1930 two-bay two-story building has a concrete foundation, concrete-block exterior, and a flat roof with a parapet, ca. 1970 metal windows are on the top floor, and metal multiple-light casement windows are on the side elevation. One entrance has an original six-light three-panel wooden door and another has a ca. 1960 glass-and-metal door. The building is substantially set back from the street; gravel area, railroad-tie fence.
- 195.) Pendleton Street between 111 and 121, 119-0012-0361 Non-contributing  
Ca. 1960, L-shaped self-storage center comprises multiple components: main building has a metal gabled roof, a concrete block exterior and foundation, 16-light metal casement windows, and corrugated metal doors; secondary gabled concrete-block building; small gabled building with concrete-block walls, a 16-light metal window, and vinyl siding in the gables; shed-roofed building with concrete-block walls open on one side with two interior compartments; asphalt parking lot.
- 196.) 121 Pendleton Street, 119-0012-0362 Contributing  
The ca. 1940 building at this address is labeled "T-SHIRTS & VIDEOS," and houses Birds Computers and The Clothes Line. On the façade is an old satellite-dish-shaped sign for Sanders Electric Satellite TV. The building has a brick veneer, concrete foundation, stepped parapet with metal coping, ca. 1960 metal display windows, and 1980 nylon awnings. One storefront has a central entrance with an original wooden single-light door. The other storefront's entry is at its inner edge; its door is similar to the other's; asphalt parking lot, standing sign for "Anders Video."
- 197.) 123 Poston Street 119-0012-0222 Non-contributing  
Two-story brick house built ca. 1960 has a concrete foundation, hipped roof of asphalt shingles, exterior of stretcher-bond brick, gable-roofed entry porch with wrought-iron columns, large picture window flanked by two-over-two horizontal-sash windows. Other windows have original two-over-two horizontal wooden sashes and one-over-one wooden sashes; exposed rafters tails, metal door leading to a second-floor entrance with a solid-wood door; concrete walkway, asphalt parking area.
- 198.) 119 South Sheffey Street, 119-0012-0161 Non-contributing  
One-story brick commercial building built ca. 1970 has a concrete foundation, flat asphalt-covered roof, stretcher-bond brick exterior, entrance framed by Doric pilasters and cornice with dentils, original, paired, six-over-six wood sash windows; paved parking lot.
- 199.) 104 Snively Street, 119-0012-0363 Non-contributing  
Ca. 2005 one-story 1<sup>st</sup> Choice Cash Advance building with a textured-concrete-block exterior and a side-gabled asphalt-shingled roof with vinyl siding in the gable field; single-light metal door and fixed single-light metal windows; asphalt-paved parking area, standing sign, ca. 1900 stone retaining wall.
- 200.) 112 Snively Street, 119-0012-0364 Contributing  
Ca. 1925 one-story gable-and-wing house with an asphalt-shingled roof with one interior brick chimney, asbestos siding, concrete foundation, gabled bay has a ca. 1975 nine-light two-panel wooden door and an upper wooden vent, other bay has an original six-light four-panel wooden door; six-over-six wood sash windows; some are paired. Both entries have concrete stoops.
- 201.) 116 Snively Street, 119-0012-0365 Contributing

United States Department of the Interior  
National Park Service

# National Register of Historic Places Continuation Sheet

Marion Historic District Boundary Increase  
Marion, Smyth County, Virginia

Section number 7 Page 30

Ca. 1940 one-story house with a raised concrete-block basement, front-gabled roof with asphalt shingles and exposed rafter tails, two interior brick chimneys, vinyl siding, central entry with an original single-light wooden door flanked by one-over-one wooden windows, wooden deck is on the façade and side, shed-roofed porch with a metal cover and exposed rafter tails, a rear hipped roof wing with an additional brick chimney; concrete block retaining wall with steps.

Ca. 1980 metal shed. Non-contributing

Ca. 1995 wooden tree house. Non-contributing

202.) 117 East Strother Street, 119-0012-0213 Contributing

Owners moved the two-story brick gable-front-and-wing house built ca. 1900 to this address in 1923. It has a brick-and-stone foundation, a gable roof of crimped metal, two interior brick chimneys, one-story enclosed porch with a ca. 1980 storm door, original brick on, ca. 1970 vinyl siding on other elevations, main entrance has a single-light glass-and-wood door; rear, original one-story brick wing, original two-over-two wood sash windows; three brick-filled windows; gravel driveway and concrete driveway.

203.) 125 East Strother Street, 119-0012-0214 Non-contributing

One-story frame house built ca. 1945 and remodeled ca. 1960 has a concrete foundation, gable roof of asphalt shingles, and an interior brick chimney, gable-roofed entry porch with ca. 1970 wooden posts, original three-vertical-light glass-and-wood door, ca. 1990 one-over-one vinyl sash windows; ca. 1960 added wing, added brick skirt wall with vinyl siding above on façade, ca. 1960 wooden door on basement section; wooden deck was added ca. 1990 to the front and side; one asphalt driveway and one concrete driveway.

204.) 604 Tazewell Street, 119-0012-0366 Non-contributing

Ca. 1990 double-wide trailer on a brick foundation. An asphalt parking area is in front of the garage.

Alongside the trailer is a ca. 1980 garage. Non-contributing

205.) 610 – 612 Tazewell Street, 119-0012-0367 Contributing

Ca. 1940 two-story dwelling with a concrete foundation, stretcher-bond brick exterior, central interior chimney, hipped roof with asphalt shingles, original glass-and-wood paneled garage door, original three-light glass-and-wood pedestrian door, original three-over-one wood-sash windows on upper floor; stepping stones path.

206.) 220 West Town Street, 119-0012-0167 Contributing

Ca. 1880 one-story outbuilding formerly housed the law office of D. C. Miller has a hipped roof with asphalt shingles, central interior chimney, six-course American bond brick exterior, stone foundation, two front bays, paneled door, six-over-six wood sash window, additional two-light paneled door; the library's parking lot is behind the building, and a sidewalk connects the building with the library facility. In front of the building is a brick patio with stone benches.

207.) 254 West Town Street, 119-0012-0179 Contributing

One-story frame house built ca. 1945 has a gable roof of asphalt shingles, an interior brick chimney, a concrete-block foundation, exterior of asbestos shingles, gable-roofed entry porch with wooden posts and railing, main entrance with a ca. 1980 glass-and-wood door, ca. 1980 one-over-one vinyl sash windows; gravel driveway.

Ca. 1970 frame storage building with masonite siding, a flat metal roof, and hinged double doors. Non-contributing

208.) 262 West Town Street, 119-0012-0178 Non-contributing

United States Department of the Interior  
National Park Service

# National Register of Historic Places Continuation Sheet

Marion Historic District Boundary Increase  
Marion, Smyth County, Virginia

Section number 7 Page 31

Ca. 1970 one-story metal mobile home with five front bays, one-over-one metal windows with shutters, wooden door with a diamond-shaped light, wooden porch with a crimped-metal roof and simple wooden rails and posts; chain link fence, gravel drive, walkway.

209) 125 Wilden Street, 119-0012-0368 Contributing

Originally built in 1932 as a doctor's office, this one-and-a-half-story brick four-bay Tudor Revival dwelling has an original arched entrance with a vertical-board and single-light door, gable roof of asphalt shingles, concrete foundation, exterior of stretcher-bond bricks, and a prominent exterior wall chimney on the main façade, original eight-over-eight and six-over-six rectangular wood sash windows with brick sills and soldier course lintels, gable-roofed porch with brick columns, original 15-light glass-and-wood door; attached garage with an original glass-and-wood multiple-panel hinged garage door; shed-roofed porch with ca. 2008 wooden posts; sunken concrete driveway leading to a basement garage entrance; curving asphalt driveway to the rear of the house.

210.) 134 Wilden Street, 119-0013 Contributing

Three-story brick Colonial Revival Marion Middle School building constructed in 1938 consists of a symmetrical central block and side wings, all with similar styling, a side-gabled slate or imitation slate roof with four gabled dormers with arched six-over-six windows and a central brick cupola, nine-light metal windows with concrete keystones, and a central recessed entry with a wooden surround and double three-light metal doors; concrete walkway, flag pole, asphalt parking lot, sign, concrete retaining wall.

211.) 135 Wilden Street, 119-0012-0370 Contributing

Ca. 1955 one-and-a-half-story three-bay Minimal Traditional house with a stretcher-bond brick exterior, concrete foundation, side-gable roof of asphalt shingles, central interior brick chimney with a corbelled cap, six-over-six vinyl sash windows, projecting gable-front enclosed entrance vestibule with a ca. 1985 oval-light glass-and-wood door, screened porch; asphalt drive, stone path.

212.) 141 Wilden Street, 119-0012-0371 Contributing

One-and-a-half-story four-bay Minimal Traditional house with a stretcher-bond brick exterior, concrete foundation, side-gable roof of asphalt shingles, exterior end brick chimney, six-over-six wood sash windows, gable-front projecting vestibule with an original nine-light wooden door, side-gabled porch, retaining wall, landscaping, driveway.

Original brick gable-front garage. Contributing

213.) 153 Wilden Street, 119-0012-0372 Contributing

Ca. 1945 one-and-a-half-story gable-front three-bay Tudor Revival-influenced house with a concrete foundation, stretcher-bond brick exterior, gable roof of asphalt shingles, exterior façade chimney with a corbelled cap, projecting gable-front entrance vestibule with a ca. 1980 wooden door with three-lights and a fanlight transom, ca. 1980 single-light metal fixed or casement windows, side-gabled bay; stone retaining wall, asphalt drive leads to an attached original single-bay garage of concrete block with a gable-front roof.

214.) 159 Wilden Street, 119-0012-0373 Contributing

Ca. 1940 Tudor Revival, five-bay, one-and-a-half-story house with a stretcher-bond brick exterior, concrete foundation, gable roof of asphalt shingles, two gable-front bays at opposite ends with six-light arched wooden casement windows, entrance vestibule has a concentric archway with a gable roof and an original single-light wooden door with a circular pane, original one-over-one wooden sash windows, exterior brick façade chimney, arched integral porch; recessed, attached garage; split rail fence, asphalt drive.

215.) 185 Wilden Street, 119-0012-0374 Contributing

United States Department of the Interior  
National Park Service

# National Register of Historic Places Continuation Sheet

Marion Historic District Boundary Increase  
Marion, Smyth County, Virginia

Section number 7 Page 32

Ca. 1915 one-story gable-front-and-wing house with a hipped roof of asphalt shingles, stretcher-bond brick exterior, rock-faced foundation, interior brick chimney, and one-over-one metal-sash windows, partial-width two-bay porch with wood posts. The house is situated behind 546 East Main Street.

### PREVIOUSLY SURVEYED RESOURCES, WITH NON-CONTRIBUTING STATUS, RESURVEYED:

1.) 308 College Street 119-0012-0157 Contributing

Ca. 1950 Ranch style house with a side gable roof of asphalt shingles, an exterior, brick chimney, pressed-wood lap siding, stuccoed foundation, original paneled door, picture window flanked by two-over-two wood sash windows, a tiled stoop entrance, small side porch with a gable roof, and a gable front wing.

2.) 318 College Street 119-0012-0068 Contributing

Ca. 1950 Ranch style house with a side gable roof of asphalt shingles, an exterior chimney, brick veneer, twelve-light wooden door, five sidelights, picture window flanked by one-over-one wood sash windows, small gable front wing, integral porch with wooden railing.

3.) 338 College Street 119-0012-0067 Contributing

Ca. 1950 two-story, two-bay Colonial Revival style house with a side gable roof of asphalt shingles, a central, interior, brick chimney, a poured concrete foundation, one-over-one wood sash windows, a central entrance with a gabled shelter, and a one-car projecting garage bay.

Ca. 1980 metal shed Non-Contributing

4.) 356 College Street 119-0012-0063 Contributing

Ca. 1950, one-story, three-bay Minimal Traditional house with a side gable roof of asphalt shingles, brick exterior, an interior, brick chimney, original, two-over-two wood sash windows, an original three-light wooden door, and a central, tiled porch.

Behind the house is a small, front-gable, one-car, original brick garage with original paneled car and pedestrian doors.  
Contributing

5.) 309 North Jones Street, 119-0012-0029 Contributing

One-story, three-bay house built 1948 has a side gable roof of raised seam metal, asbestos siding, original, wood sash one-over-one windows, and a concrete foundation; concrete stoop with a gabled awning with slender columns, solid door.

6.) 123 East Main Street 119-0012-0147 Contributing

Ca. 1950, two-story, three-bay commercial building with a flat roof, brick exterior, upper windows with wood covers, ca. 1970 wood-shingled awning above the storefront, ca. 1970 paired metal display windows, recessed central bay, and pair of metal doors.

7.) 202 East Main Street 119-0012-0131 Non-Contributing

At this location is a one-story, four-bay, ca. 1995 Colonial Revival building with a side gable roof of faux slate, brick exterior, dentils, an entrance with a broken pediment, multi-light doors, and vinyl Palladian windows.

8.) 309 West Main Street 119-0012-0158 Demolished

This building was demolished post-2000 survey.

9.) 101 North Park Street 119-0012-0097 Contributing

Ca. 1950, one-story, concrete block, commercial building with a flat roof and two storefronts: one with resized openings infilled with block glass and a ca. 1980 single-light metal door; the other with four single-light display windows, ca. 1980 doors with single-light transoms and ca. 1980 awnings.

United States Department of the Interior  
National Park Service

# National Register of Historic Places Continuation Sheet

Marion Historic District Boundary Increase  
Marion, Smyth County, Virginia

Section number 7 Page 33

---

10.) 221 North Sheffey Street 119-0012-0038 Contributing

Ca. 1955, one-story-four-bay brick house with a side gable roof of asphalt shingles, an exterior, brick chimney, one-over-one wood sash windows, pair of single-light sliding windows, a ca. 2000 paneled door, a tiled stoop with a closed gable roof and milled wood posts, a porte cochere with a balcony, and a side porch with a hipped roof.

11.) 110 Strother Street 119-0012-0080 Non- Contributing

Ca. 1900, two-story house with low hipped roof of asphalt shingles, aluminum siding, six-over-one wood sash windows a one-story, one-bay porch, ca. 1975 shutters, and a ca. 1980 two-light paneled door.

12.) 110 South Chestnut Street 119-0012-0115 Non- Contributing

At this location is an open-air, side gabled shelter with a raised seam metal roof. The wood frame appears to be from ca. 1990, though previous surveys dated to ca. 1950.

13.) 111 North Church Street 119-0012-0098 Contributing

Ca. 1955, two-story, three-bay Colonial Revival office building with a flat roof, brick exterior with dentils and quoins, a concrete foundation, central entrance porch with a hipped roof of raised seam metal, ca. 1980 fluted, vinyl columns, original, one-over-one wood sash windows with concrete sills and lintels.

United States Department of the Interior  
National Park Service**National Register of Historic Places  
Continuation Sheet**Section number 8 Page 34Marion Historic District Boundary Increase  
Marion, Smyth County, Virginia**STATEMENT OF SIGNIFICANCE*****Summary Statement & Justification of Criteria***

The Marion Historic District in Smyth County, Virginia, was originally listed in 2000 on the National Register of Historic Places under Criterion A for its local significance in commerce and education and Criterion C for local significance in architecture. The same criteria apply to this boundary increase because, under Criterion A, the district represents broad patterns of development of a county seat in a region of rapid industrial and commercial growth during the late nineteenth and early twentieth centuries. County seats in the region of southwestern Virginia were centers of population, thus, commerce, education, and politics, as pioneers moved westward to establish new communities. Under Criterion C, Marion's prosperity from the late nineteenth through early twentieth centuries is evident in the extant architecture of the period. As a whole, the existing district and boundary increase comprise an intact, contiguous area containing commercial and institutional properties lining the principal blocks of Main Street and domestic structures in neighborhoods to the north and south. The period of significance begins in 1855, as justified in the original district nomination, and ends in 1958, the year the latest contributing resources were constructed within the new district boundary.

***Historical background***

Earliest settlers came to the southwestern region of Virginia in the mid-eighteenth century. Stephen Holsten, Charles Sinclair, and Samuel Stalnaker claimed thousand-plus-acre tracts along the Middle and South Forks of the Holston River. These were recorded by surveyor James Patton in 1748. However, raids during the French and Indian War thwarted permanent settlement attempts in the region until 1769. Twenty years later, the Virginia General Assembly directly influenced rapid immigration to the area through the order of a new road over the Cumberland Mountains into Kentucky. The Wilderness Road led pioneers into the southwestern portion of the state. The area that became the town of Marion, originally included in a land grant to the Campbell family, was situated along both the Wilderness Road and the Middle Fork of the Holston River. These features figured significantly in the developed of Marion.<sup>1</sup>

Smyth County was established in 1832, taking portions of Washington and Wythe Counties. Land was selected for the site of the county courthouse, and the town was named after Revolutionary War General Francis Marion. The courthouse was completed in 1834, and the streets surrounding it quickly became populated with houses, mercantiles, livery stables, and taverns. By 1835, the population of Smyth County was over 6000, including 1400 slaves; 100 people lived in Marion, including three attorneys and two doctors.<sup>2</sup> In 1846, the General Assembly of Virginia called for the construction of a road from Salem, westward, through Marion. The Southwestern Turnpike, following the path of the Wilderness Road, provided a macadamized road surface, which allowed Marion continued growth in population and trade. Additionally, by 1848, the Virginia and Tennessee Railroad was under construction, spanning 328 miles from Petersburg

<sup>1</sup> Gibson Worsham, "National Register of Historic Places Nomination: Marion Historic District," Section 8, 2000.

<sup>2</sup> Ibid.

United States Department of the Interior  
National Park ServiceNational Register of Historic Places  
Continuation Sheet

Section number

8

Page

35

Marion Historic District Boundary Increase  
Marion, Smyth County, Virginia

to Bristol, also running through Marion.<sup>3</sup> These land routes of transportation, along with rivers, provided Smyth County, with Marion as its county seat, ample opportunities to move products to market, ensuring their success and growth.

**Criterion A: Commerce & Education**

During the decade prior to the Civil War, Smyth County prospered through agriculture, industry, and mineral extraction. Along with salt, the county was abundant with gypsum and limestone, which were used to fertilize cropland. In 1850, the county produced 301,222 bushels of corn, 34,742 bushels of wheat, 139,580 bushels of oats and 100,410 pounds of butter. Industrially, in Smyth County there were seven saw mills, three iron furnaces, one iron foundry, one salt furnace and two tanneries. With a population of 8162 (including 1064 slaves), Smyth County contained twelve churches and 600 pupils attending public schools.<sup>4</sup> On record in Smyth County during the mid-1850s were fourteen dry goods mercantiles, seven hotels, four industrial manufacturers, and eight physicians.<sup>5</sup>

While Smyth County's infrastructure suffered destruction wrought by the Civil War, it rebounded quickly, continuing the industrial growth begun in ante bellum years. Rail lines and bridges were quickly repaired to ensure continued access to markets. During the post-war period, rail mergers became common, and the Virginia and Tennessee Railroad reorganized as the Atlantic, Mississippi, and Ohio railroad, expanding Marion's commercial sphere. Lucrative crops shipped from the fertile valley included corn, wheat, tobacco, oats, and buckwheat, as well as dairy and orchard products. Smyth County continued extracting salt, limestone, and gypsum, and, in addition, marble, copper and iron ore.<sup>6</sup>

The county's population grew from almost 9000 in 1860 to 12,160 by 1880, or thirty-six percent.<sup>7</sup> By 1887, the number had grown to 14,000, with 1300 people residing in Marion. The county seat by that time had evidenced its importance in finance via the establishment of the Bank of Marion, newspaper publishing via the *Conservative Democrat*, and leisure entertainment via the Seaver's Opera House, the county's only bank, newspaper, and opera house, respectively. Health care professionals of Smyth County were concentrated at Marion, where three of the county's five dentists, both of the county's druggists, and four of its thirteen physicians practiced. For lodging accommodations, Marion offered travelers three of the county's four hotels; two boarding houses were also available in Marion.<sup>8</sup>

<sup>3</sup> William W. Huber, "National Register of Historic Places Nomination: Marion Norfolk and Western Railway Depot," Section 8, 1994.

<sup>4</sup> Richard Edwards, "Statistical Gazetteer of the State of Virginia," in New River Notes accessed July 16, 2008 at website <http://www.newrivernotes.com/va/vagaz1854.htm>.

<sup>5</sup> "Thomson's Mercantile and Professional Directory- Virginia- 1851," in New River Notes, accessed July 16, 2008 at website <http://www.newrivernotes.com/va/vathom.htm#smy>

<sup>6</sup> "Chataingne's 1888-89 Gazetteer and Business Directory for Smyth County, Virginia," in New River Notes accessed July 16, 2008 at website <http://www.newrivernotes.com/va/smyt1888.htm>.

<sup>7</sup> Worsham.

<sup>8</sup> Ibid.



United States Department of the Interior  
National Park Service

# National Register of Historic Places Continuation Sheet

Section number 8 Page 36 Marion Historic District Boundary Increase  
Marion, Smyth County, Virginia

---

Commercial enterprise flourished in Marion, while agricultural-based activity within the county continued to expand. In 1887, Marion boasted eleven of the county's twenty-seven general merchandise establishments, four blacksmiths, three butcher markets, two grocers, two hardware stores, three insurance agents, four carpenter-builders, and three jewelers. Across Smyth County were twenty-three grain mills, fourteen sawmills, three woolen mills, six saddle makers, and four tanners. The majority of the county's population was engaged in farming.<sup>9</sup>

Education also made advances in Smyth County following the war. While, Smyth County students already enjoyed access to public schools, the 1869 Underwood Constitution of Virginia mandated state funding of public schools (as well as extended the right to vote to all males over the age of twenty). In Marion, a new grammar school was built. One-room schoolhouses were built for rural residents throughout the county. Education for African American students was limited to log houses or outbuildings, typically with teachers educated in the North. By 1887, Smyth County has fifty-seven white schools and seven black schools. Private schools were also available to students of Smyth County and Marion.<sup>10</sup>

Before 1870, Marion had one co-educational secondary school, established by J.J. Schere. In 1873, Marion became home of two new private educational institutions, the Lutheran Church-based Marion Female College, located west of downtown north of Main Street, and the Marion Male Academy. The latter was also located west of downtown Marion within a residential district on College Street. The academy's objective was to prepare students for university coursework, as well as provide extracurricular activities. The Marion Male Academy was listed on the National Register of Historic Places in 1989, representing the town's leadership in education in southwest Virginia.<sup>11</sup>

The town of Marion had by the 1880s established itself as an important center of public and private productivity. When the need for an additional state mental health institution became evident, the Virginia General Assembly appointed a commission to locate a site for a new facility, and the town of Marion became the choice in the southwest region. Completed in 1887, the Southwestern State Hospital became a leading employer in Marion.<sup>12</sup> The location chosen for the hospital, east of downtown on East Main Street, would later influence the development of a residential neighborhood as Marion continued to expand.

Rapid industrialization occurred in Marion during the years leading into the twentieth century. The railroad was bought by a private bank in Philadelphia and was renamed the Norfolk and Western Railroad. New steel tracks were laid, allowing for greater freight transportation, including of coal. Public water lines were laid in 1888, and the Smyth County Telephone Company was organized. The Marion Light and Power Company was established in 1900. The Norfolk and Western built a passenger depot northeast of downtown Marion in 1903, at which time there were two banks in town. Marion's population continued

---

<sup>9</sup> Ibid.

<sup>10</sup> "Chataingne's 1888-89 Gazetteer and Business Directory for Smyth County, Virginia;" Ibid.

<sup>11</sup> Gibson Worsham, "National Register of Historic Places Nomination: Marion Male Academy," Section 8, 1989.

<sup>12</sup> John Salmon and Julie Vosmik, "National Register of Historic Places Nomination: Henderson Building/Southwestern State Hospital, Section 8, 1989; Kenneth William Heath, Marion and Hungry Mother State Park (Charleston, SC: Arcadia Publishing Company, 2004).

United States Department of the Interior  
National Park ServiceNational Register of Historic Places  
Continuation Sheet

Section number

8

Page

37

Marion Historic District Boundary Increase  
Marion, Smyth County, Virginia

growing, to 2045 people by 1900;<sup>13</sup> the population of Smyth County was 17,230. While agriculture provided livelihoods for the majority of residents, increased industrialization had made Marion a financial and commercial center of the southwestern region.<sup>14</sup>

By 1907, Smyth County had grown its public school system to sixty-one buildings with eighty-eight teachers. There were forty churches at that time, and a three-decade old ban on the sale of alcohol within the county suggests a collective civic progressivism. Marion's inclination towards improvement and stability was reflected in the decision to raze its pioneer, 1834 county courthouse and replace it with a new and larger one built in 1905 in the Neo-classical style.<sup>15</sup> Following its thematic use at the 1893 World's Fair, Neo-Classical architecture was thought to represent the height of modern culture, and Marion's new county courthouse re-affirmed the city's regional leadership not only in public matters, but in finances, education, and commerce.

The ideals of simplicity and stability associated with Neo-Classicism were in practice at the growing Southwestern State Hospital (119-5006). With over 500 patients in 1907, the facility was a model of self-sufficiency. It maintained its own electric light and power plant, and enjoyed a gravity-fed supply of water from a natural spring three miles from Marion. The hospital's farm produced over \$12,000 in produce supplying patients and employees with nearly 25,000 gallons of milk and 11,000 dozen eggs in 1907.<sup>16</sup>

Agriculture remained the basis of the economy for much of Smyth County during the early part of the century. It was common for a county poultry farms to ship 300,000 dozen eggs to market, as well as thousands of hens, turkeys, and ducks. The uplands of the valley were covered in indigenous bluegrass, a livestock forage so plentiful in Smyth County and rich in nutrients, that no corn was required to fatten cattle for market. Vegetables from cabbages to potatoes to apples were grown in abundance, thanks to rich river bottoms and temperate climate.<sup>17</sup> With access to rail transportation in Marion, county farmers could quickly move produce to market.

Marion industry continued to prosper in these years as well. The Look & Lincoln factory, making wagon and plows since 1865, became the Virginia Table Works company in the early twentieth century, shifting its focus to furniture making. The Marion Foundry and Machine Works expanded to include railroad repair services. By 1920, Marion's population was 3253. Railroads continued to dominate transportation of freight, and the establishment of the first state highway by the Virginia General Assembly ushered in the era of automobile transportation for passengers. The state highway commission assumed the responsibility of road construction and maintenance. The state road, running from Winchester to Staunton, Virginia, continued through Smyth County and Marion as US Highway 11, also known as the Lee Highway. Accordingly, automobile sales stores, repair garages, and fuel stations appeared on the Marion landscape.

---

<sup>13</sup> Worsham, "Marion Historic District."

<sup>14</sup> John P. Sheffey, ed., "General Resources and Advantages of Smyth County," accessed July 16, 2008 at website <http://www.newrivernotes.com/va/smyth907.htm>.

<sup>15</sup> Ibid.

<sup>16</sup> Ibid.

<sup>17</sup> Ibid.

United States Department of the Interior  
National Park ServiceNational Register of Historic Places  
Continuation SheetSection number 8 Page 38 Marion Historic District Boundary Increase  
Marion, Smyth County, Virginia

The economy of the area was booming, and new banks, hotels, and entertainment venues joined the Main Streetscape of downtown Marion.<sup>18</sup>

During the 1930s, Marion experienced continued advances in public facilities, as its population continued growing. During 1931, the Southwestern State Hospital's Henderson Building (119-004) underwent a physical transformation from the Italianate to the Colonial Revival style. The change reflected the shift away from Victorian embellishment towards a more reserved manifestation of order and simplicity. During the same period, a WPA post office (119-0008) was constructed in the Colonial Revival style in 1934-35. Improvements in black education included the establishment of the Carnegie School in Marion. The new Marion High School (119-0012-0369/119-0013), now the Marion Middle School, opened in 1938, exemplifying the symmetrical balance and modest adornment of the Colonial Revival style. Located at 134 Wilden Street, east of downtown Marion, the school was sited in the neighborhood that grew up around the Southwestern State Hospital.

From the intersection of West Main and Pendleton Streets, the terrain rises high above the downtown commercial area. The location of the hospital at the top earned the East Main Street extension the name "Hospital Hill." While the hospital itself is set far back from the street, Bungalow and Colonial Revival style dwellings created a residential neighborhood beginning in the early twentieth century, with many homes dating to the 1920s. The neighborhood reflects the natural expansion of the town, but still in a compact arrangement bordering the commercial area. In 1927, famous novelist and short-story author Sherwood Anderson had moved to Marion. The author nicknamed Marion's downtown commercial area "the Rialto" for its excitement and entertainment. From Hospital Hill, one could look down on the busy "Rialto" that captured Anderson's fancy. Though Marion was the bustling center of the southwestern region of Virginia, Anderson considered it a charming country town. When he bought the town's two newspapers, merging them into the "Smyth County News and Messenger" and became its editor, he created a fictional character "Buck Fever," a local mountain man, as his voice of his news reporting.<sup>19</sup>

By 1940, Marion's population had grown to 5177. Accordingly, there was an increase in single-dwelling and multiple-unit housing construction. With a new high school, Marion was able to convert the former high school building on Church Street into an elementary school in 1946. Marion's population continued to grow through the war years, increasing to 6982 by 1950.<sup>20</sup> Settlement patterns remained largely unchanged in Smyth County and Marion through 1960. However, with the 1960s construction of Interstate 81, parallel to Highway 11, the compact arrangement centered on Main Street was no longer the model followed. Commercial businesses could move to the outskirts and still offer convenient access to consumers, and residential subdivisions could offer larger lots and new construction outside of the city limits. Though a few buildings were added to the Marion Historic District during the 1950s, the decade signaled the end of familiar commercial and residential development patterns.

<sup>18</sup> Worsham, "Marion Historic District."

<sup>19</sup> Heath, 9; Worsham, "Marion Historic District."

<sup>20</sup> Worsham, "Marion Historic District."

United States Department of the Interior  
National Park Service

# National Register of Historic Places Continuation Sheet

Section number

8

Page

39

Marion Historic District Boundary Increase  
Marion, Smyth County, Virginia

---

## **Criterion C: Architecture**

Established in 1832, the history of the development of Marion is closely tied to the town's relationship with the main road (Highway 11, today), a major thoroughfare and route of commerce. Marion's growth reflects broad patterns of development of the county seat of Smyth County along an important trade route, including rapid industrial and commercial growth during the late nineteenth through early twentieth centuries. Marion's central location in the county, rail and water transportation routes, and rich natural resources, facilitated its growth. Commercial buildings and the earliest dwellings of Marion were located along Main Street. As the economy prospered, residential neighborhoods expanded to the streets north and south of the commercial area. The town's prosperity is reflected in the quality of its architecture, the extant commercial and residential buildings, dating from the late nineteenth and early twentieth centuries.

As the original Marion Historic District nomination lists and describes the 180 primary resources within its boundaries at the time of listing (2000), this Boundary Increase addresses the resources of adjacent neighborhoods that were unavailable for inclusion at that time, due to the limited scope of survey. A total of 272 buildings and 2 sites are included in the boundary increase. Most of these are located to the northeast and east of the existing district and include residential neighborhoods and a commercial corridor along Pendleton and North Main Street. To either side of this strip of commercial establishments are three concentrations of dwellings, the first including Wilden, Locust and East Main Street and the second including blocks of Lee, Franklin, Maple, Broad and Chestnut Streets, to the north of the district. Additionally, a third smaller residential neighborhood is located to the southwest of the existing district on West Cherry Street.

The neighborhood along West Cherry Street begins at the intersection of West Cherry with Sheffey Street, and continues southwest to Poston Street. This neighborhood was developed over several decades, featuring houses from ca. 1890 through the 1930s. There are several examples of ca. 1890 vernacular form dwellings, such as the two-story central-hall I-house at 138 West Cherry (199-0012-0162), at the northeast end of the neighborhood, as well as simpler one-story, side-gable dwellings from the same time, as at 228 West Cherry Street (119-0012-0169), at mid-neighborhood, and 360 West Cherry Street (119-0012-0192), at the southwest end of the street. The central-hall plan, a popular vernacular form of this period, had a symmetrical arrangement of rooms to each side of the central hall. Typical of the form, these examples feature side gable roofs with an end chimney at each gable and full-width, one-story porches.

On West Cherry Street, several Bungalow dwellings are present. These houses typically date from the 1920s and are one- or one-and-one-half-story in height. Their roof shape can be single- or complex-gabled or even hipped. The front porch is a defining feature of the Bungalow design, as seen at 223 West Cherry Street (119-0012-0170) and 214 West Cherry Street (119-0012-0165). The Bungalow is closely associated with the Craftsman style, which continued in popularity into the 1930s. Generally, the Craftsman movement occurred in response to machined mass production and busy Victorian embellishment, in both architecture and furniture design. The Craftsman style embraced the individualism of artisanship, rejecting ornate ornamentation for simpler, basic forms. The open plans of these dwellings contrasted sharply with Victorian compartmentalization. Examples of Craftsman architecture can be found at 304 West Cherry Street (119-0012-0175) where the ca.1935 one-story Craftsman house features multiple chimneys, including one on the façade, wooden brackets, and a four-bay façade, with three projecting bays within a single front-gabled section, and a fourth cross-gable porch bay. The ca. 1935 Craftsman at 314 West Cherry Street (119-0012-

United States Department of the Interior  
National Park Service

# National Register of Historic Places Continuation Sheet

Section number 8 Page 40 Marion Historic District Boundary Increase  
Marion, Smyth County, Virginia

---

0180) is a front-gabled dwelling set atop a hill, askew from the street and accessed by wooden steps and a walkway and has an entrance both under its full-width porch and its long side.

Another Marion neighborhood with similarly dated resources is located to the north of the existing district's east end. East Strother, East Lee, and Franklin Streets are parallel to Main Street; cross-streets in this neighborhood are Broad, Chestnut, and Maple Streets. This neighborhood adjoins the existing district where residential buildings were constructed behind the commercial blocks. As on West Cherry, ca. 1890-1910 Center Hall plan dwellings can be found, both two-story examples, as at 305 Broad Street (119-0012-0234), and one-story models, at 325 Maple Street (119-0012-0350). These dwellings have the typical side gable roof common for the plan. Another early twentieth-century vernacular form found in this neighborhood is the pyramid square plan, found at 320 and 326 Maple Street, (119-0012-0352) and (119-0012-0354), respectively. As the name suggests, these one-story forms have square dimensions with a pyramidal roof shape. They date to ca. 1915. Bungalows are also found here, as at 219 Broad Street (119-0012-0231), which has several typical features such as exposed rafter tails, knee brace eave brackets, and a front porch.

Into the twentieth century, more distinct styles of architecture begin to appear in residential neighborhoods, such as Tudor Revival dwellings at 215 and 211 Broad Street, (119-0012-0230) and (119-0012-0229), respectively. This style was popular from the 1920s through the 1940s. The style may feature projecting bays with gabled roofs, as at 211 Broad, whose projecting bay has a diamond shaped window pane, a common embellishment for a gable field or entrance. A common exterior treatment found in the Tudor Revival style is stucco with half-timbering, as at 215 Broad Street.

As noted, Marion's pattern of development consisted of commercial buildings along Main Street and dwellings to the north and south. Broad Street exemplifies this arrangement, as a cross-street to Main that has both commercial buildings, in the first blocks from its intersection with Main, and residences, on the blocks further away from the town's commercial thoroughfare. At 116 Broad Street (119-0012-0225) is a two-story, brick commercial building from ca. 1945. It displays typical characteristics of a commercial building from this period with a façade featuring original brick bulkheads, display windows, and a flat roof. This particular building also has original Carrara glass panels, popular during this period when the smooth, shiny surfaces of Art Moderne were in style.

During the early-to-mid-twentieth century, Art Deco was also a popular architectural style. Featuring geometric designs, it was used mainly for public and commercial buildings. In Marion, the Art Deco style was used at 103 – 105 Pendleton Street (119-0012-0356), south of the intersection of Pendleton and Main Streets. This ca. 1915 one-story Art Deco warehouse has metal-cased display windows divided by corbelled brick pilasters with stepped caps, creating an emphasis on the vertical. Above are ca. 1940 Carrara glass panels. Moving away from Main Street, south along Pendleton Street, there is a mix of residential and commercial buildings, dating from ca. 1910 to ca. 1940.

Where Pendleton "T's" into Main Street, the latter divides into East Main, ascending "Hospital Hill," a residential neighborhood, and North Main, which continues as a mix of commercial and residential. Among the former are historic commercial buildings, as at 315 North Main Street (119-0012-0320) a

United States Department of the Interior  
National Park Service

# National Register of Historic Places Continuation Sheet

Section number 8 Page 41 Marion Historic District Boundary Increase  
Marion, Smyth County, Virginia

---

ca. 1915 two-story, five-bay building with stretcher-bond brick veneer with a tapestry-brick insert; original residences adapted for commercial use, as at 323 North Main Street (119-0012-0322) a ca. 1920 Bungalow with an original Craftsman door and sidelights and a three-bay porch with brick posts; and modern, franchise buildings, such as the Hardee's fast-food restaurant at 347 North Main Street, (119-0012-0326). Residential buildings on North Main Street include single and multiple dwellings. At 405 North Main Street (119-0012-0328) is a two-story, frame, three-bay Queen Anne dwelling built ca. 1900 with original milled columns, milled railing, and spindled frieze, and porch eave brackets, typical of the style. At 411 North Main Street (119-0012-0329) is a similar style, the Folk Victorian, here found on the vernacular gable-and-wing house plan. The ca. 1895, one-story, frame dwelling has original milled brackets, original two-light-and-two-panel glass-and-wood doors, original six-over-six wood sash windows, original saw-tooth valances, and saw-tooth shingles in gable fields. At 516 North Main Street (119-0012-0338) is a ca. 1920, two-story, two-bay apartment building with a flat roof with a parapet and six-course American-bond brick exterior. North Main Street continues with commercial buildings, both historic and modern, towards the train depot, after which a handful of original dwellings have been adapted for commercial uses.

The East Main Street neighborhood began its development around the turn of the twentieth century. By that time, the Southwestern State Hospital had been in operation over ten years. As it grew, it came to employ many Marion residents. The neighborhood that developed along east Main and Locust Streets was a logical expansion on Marion's residential neighborhoods. The earliest dwellings are of vernacular form, such as the gable-and-wing plan at 350 East Main Street (119-0012-0287) and the two-story, central hall plan at 181 Locust Street (119-0012-0246). Bungalows are most prevalent in the neighborhood, signifying a surge of growth during the 1920s. The Bungalow at 416 East Main Street (119-0012-0289) features a complex roof, a characteristic common to the style; the Bungalow at 188 Locust Street (119-0012-0283) features a full-width porch with original Tuscan columns on brick piers and an original single-light glass-and-wood door with a single-light transom and sidelights, all typical characteristics.

Other styles that followed include Tudor Revival, Colonial Revival, and Ranch dwellings. The Tudor Revival at 315 East Main Street (119-0012-0258) has a rock-faced, exterior wall chimney on the façade and a small vestibule entrance. These are common characteristics of the style. These and other Tudor Revival traits, such as the high-pitched, cross gable roof and diamond-light fenestration, are found at 421 East Main Street (119-0012-0263). At 522 East Main Street (119-0012-0292) is a two-story Colonial Revival displaying the symmetry typical of the style, with a central entrance flanked by matching fenestration. During the 1930s, this neighborhood was selected by the city for the location of a new Marion High School, suggesting that local government took note of the growing neighborhood to the east of downtown. Originally, the city high school was located on Church Street, two blocks north of Main Street, in downtown Marion. This neighborhood to the east continued growing into the mid-twentieth century, as seen by several dwellings from that time, such as Ranch style houses. The ca. 1945, one-story Ranch dwelling at 185 Locust Street (119-0012-0247) is characteristically low and long, further emphasizing the horizontal with original two-over-two horizontal wood-sash windows and an original three-horizontal-light glass-and-wood door. As often seen in the Ranch style, this example has a (triple) single-light picture window.

Buildings in the Marion Historic District illustrate the development of the town, expanding outward from the commercial corridor along Main Street. Residences are found within the blocks to the north and south. The construction dates of these dwellings demonstrate as a group the gradual process of in-filling of residential

**United States Department of the Interior**  
**National Park Service**

# **National Register of Historic Places**

## **Continuation Sheet**

Section number 8 Page 42

Marion Historic District Boundary Increase  
Marion, Smyth County, Virginia

---

neighborhoods. The earliest neighborhoods were laid out beginning after the Civil War through the 1880s. The principal streets to the north of Main Street were Strother and Lee (then called Foundry) Streets; to the south of Main Street, Cherry was the main residential street. Development spread more to the west than east at that time. A Sanborn Map from 1885 shows that Marion was concentrated between Chestnut Street to Sheffey Street on the west. Most of the earliest growth centered around the courthouse, approximately equidistant from the above north-south streets. A 1908 map shows a mix of brick and frame structures; by 1927 the majority of the commercial building stock was of masonry. By this time, the previously vacant spaces within residential blocks were filling. This compact development continued through the mid-twentieth century, at which time interstate construction influenced a shift in patterns of development, with businesses and residences moving to the outskirts and beyond, rather than continuing to center on downtown Marion.

United States Department of the Interior  
National Park Service

# National Register of Historic Places Continuation Sheet

Section number 9 Page 43

Marion Historic District Boundary Increase  
Marion, Smyth County, Virginia

---

## BIBLIOGRAPHY

"Chataingne's 1888-89 Gazetteer and Business Directory for Smyth County, Virginia," in New River Notes accessed July 16, 2008 at website <http://www.newrivernotes.com/va/smyt1888.htm>

Edwards, Richard. "Statistical Gazetteer of the State of Virginia," in New River Notes accessed July 16, 2008 at website <http://www.newrivernotes.com/va/vagaz1854.htm>.

Harrington, Ronnie.E. *Marion Landmarks, Past and Present*. Marion, VA: Tucker Printing, 2007

Heath, Kenneth William. *Marion and Hungry Mother State Park*. Charleston, SC: Arcadia Publishing Company, 2004.

Huber, William W. "National Register of Historic Places Nomination: Marion Norfolk and Western Railway Depot," Section 8, 1994.

Salmon, John and Julie Vosmik, "National Register of Historic Places Nomination: Henderson Building/Southwestern State Hospital, Section 8, 1989.

Sheffey, John P. ed. "General Resources and Advantages of Smyth County," accessed July 16, 2008 at website <http://www.newrivernotes.com/va/smyth907.htm>.

"Thomson's Mercantile and Professional Directory- Virginia- 1851," in New River Notes, accessed July 16, 2008 at website <http://www.newrivernotes.com/va/vathom.htm#smy>.

Worsham Gibson "National Register of Historic Places Nomination: Marion Historic District," Section 8, 2000.

\_\_\_\_\_. "National Register of Historic Places Nomination: Marion Male Academy," Section 8, 1989.



**United States Department of the Interior**  
National Park Service

# National Register of Historic Places

## Continuation Sheet

Section number 10 Page 44

Marion Historic District Boundary Increase  
Marion, Smyth County, Virginia

### VERBAL BOUNDARY DESCRIPTION

The boundary of the Marion Historic District, as amended, begins at the northwest corner of the district with 411 and 412 College Street, west of the intersection of Poston Street; thence east along College Street to 329 College Street at the west terminus of North Street and including all properties on both sides of Funk, Bluff, North, Maple, Chestnut, and Franklin streets, south of River Street and west of N. Commerce Street. Thence proceeding east from the corner of N. Commerce and Elee streets across a tributary of the Holston River, from where the north boundary is defined by the Holston River until it turns south along Campbell Avenue, which defines much of the eastern boundary of the district. From the river's southerly turn the boundary extends east on the north side of N. Main Street only, as far as 715 N. Main Street, just east of Holston Street. From the corner of Campbell Avenue and E. Main Street, the boundary turns south and west to include both sides of E. Main, Locust, Tazewell, Wilden, Cedar, and Pendleton streets, as well as Acton Lane on the south side of E. Main. Proceeding west, the district includes the east side of S. Commerce Street as far as 303 Commerce, 216 E. Town Street and both sides of S. Chestnut on the south side of E. Town Street; turning south following the original district boundary to include lots on the south side of Cherry Street, then continuing to include all addresses on the south and north sides of Cherry Street proceeding west to S. Poston Street, where the boundary turns north to rejoin the original boundary at the intersection of S. Poston and S. Main streets. The boundaries of the entire district, including the amended area, encompass approximately 130 acres. Of the 130 acres, 61 acres made up the original district, designated in 2000. The accompanying map illustrating the boundary is drawn at a scale of 1" = 400'.

### VERBAL BOUNDARY JUSTIFICATION

The Marion Historic District boundary is drawn to include the largest concentration of contiguous commercial properties in the downtown area and residential properties in adjacent neighborhoods that retain integrity. The boundary represents the historic compact arrangement of the town as it developed into a center of commerce and education for Smyth County and the region of southwestern Virginia, beginning with its founding and extending through the 1950s. The original nomination for the district concentrated on the historic commercial area and the residential area to the north and west of downtown. This boundary increase includes all of the contiguous properties that possess architectural and historical significance as well as integrity.

### UTM REFERENCES CONTINUATION

- |                         |                         |
|-------------------------|-------------------------|
| 5. 17 453048E 4076190N  | 18. 17 454465E 4077161N |
| 6. 17 453029E 4076235N  | 19. 17 454266E 4077110N |
| 7. 17 453211E 4076343N  | 20. 17 454483E 4077017N |
| 8. 17 453136E 4076507N  | 21. 17 454614E 4076695N |
| 9. 17 453295E 4076766N  | 22. 17 454390E 4076689N |
| 10. 17 453344E 4076652N | 23. 17 454275E 4076668N |
| 11. 17 453428E 4076711N | 24. 17 453979E 4076434N |
| 12. 17 453442E 4076811N | 25. 17 453933E 4076518N |
| 13. 17 453556E 4076931N | 26. 17 453839E 4076470N |
| 14. 17 453859E 4076907N | 27. 17 453870E 4076413N |

United States Department of the Interior  
National Park Service

# National Register of Historic Places Continuation Sheet

Section number      10      Page      45  
\_\_\_\_\_

Marion Historic District Boundary Increase  
Marion, Smyth County, Virginia

- 
- 15. 17 454239E 4077155N
  - 16. 17 454398E 4077240N
  - 17. 17 454461E 4077217N

**United States Department of the Interior**  
National Park Service

# National Register of Historic Places Continuation Sheet

Section number \_\_\_\_\_ Photos \_\_\_\_\_ Page 46

Marion Historic District Boundary Increase  
Marion, Smyth County, Virginia

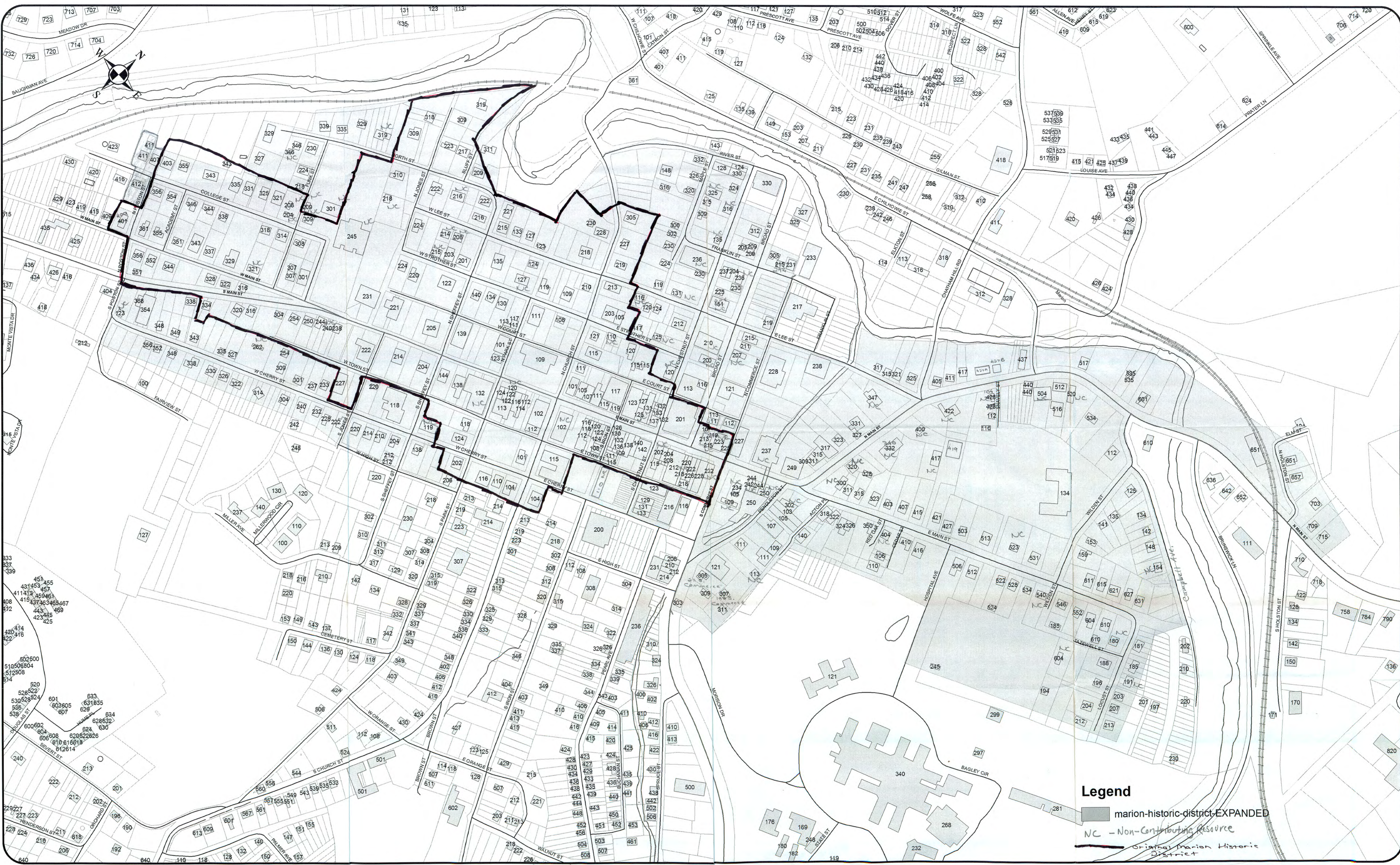
---

Marion Historic District  
Marion, Smyth County, Virginia

Photos by: Thomason and Associates  
Date: December 2007, March 2008  
Location of Negatives: VDHR, Richmond, VA

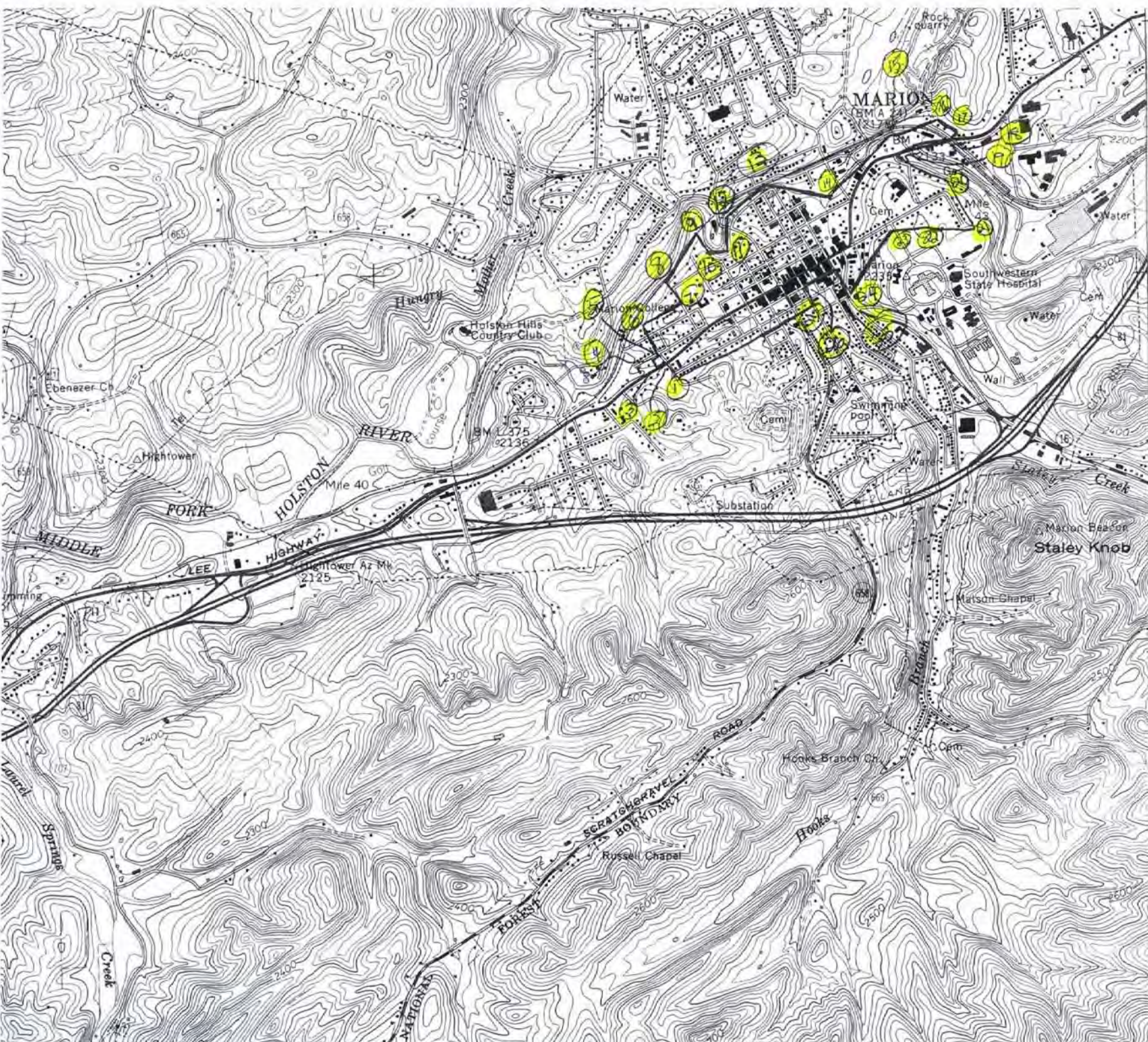
Note: All photographs are of properties within the district amendment area.

- Photo No. 1: East & West Main Streetscape, facing southwest
- Photo No. 2: 400 block North Main Streetscape, facing northeast
- Photo No. 3: 300 block West Cherry Streetscape, facing southwest
- Photo No. 4: 651 North Main Street, facing northwest
- Photo No. 5: 134 Wilden Street, facing west
- Photo No. 6: 651 North Holston Street, facing north
- Photo No. 7: 220 West Cherry Street, facing southeast
- Photo No. 8: 604 East Main Street, facing southeast
- Photo No. 9: 315 Maple Street, facing northeast
- Photo No. 10: 111 Pendleton Street, facing east
- Photo No. 11: 249 East Main Street, facing northeast
- Photo No. 12: 220 West Town Street, facing southeast



**Legend**  
 marion-historic-district-EXPANDED  
 NC - Non-Contributing Resource  
 Original Marion Historic District

Marion Historic District Boundary Increase  
 Smyth County, VA  
 DHR# 119-0012



7	17	453011E	4076343N
8	17	453136E	4076507N
9	17	453295E	4076766N
10	17	453340E	4076852N
11	17	453428E	4076711N
12	17	453442E	4076811N
13	17	453550E	4076931N
14	17	453659E	4076907N
15	17	454239E	4077185N
16	17	454398E	4077340N
17	17	454461E	4077217N
18	17	454465E	4077161N
19	17	454260E	4077110N
20	17	454483E	4077017N
21	17	454614E	4076915N
22	17	454390E	4076629N
23	17	454275E	4076644N
24	17	453079E	4076434N
25	17	454933E	4076514N
26	17	453851E	4076470N
27	17	453870E	4076413N

ATKINS 223-SW)  
4757 IV SW

ATTWAY 23 MI.  
24 MI. TO U.S. 58

*Marion HD*

**United States Department of the Interior**  
National Park Service

Marion Historic District Boundary Increase
Name of Property
Smyth County, VA
County and State
N/A
Name of multiple listing (if applicable)

**National Register of Historic Places**  
**Continuation Sheet**

Section number Additional Documentation Page 1

Approved:  
NRHP 4/24/2017

Introduction

The Marion Historic District was originally listed in the National Register of Historic Places on August 2, 2000. A nomination to increase the historic district’s boundaries was listed in the National Register on July 28, 2011. This additional documentation is being submitted to correct mapping of the historic boundary and entries in the district inventory associated with the 2011 boundary increase nomination. The historic district’s boundaries *have not changed* as a result of this update.

Due to professional error, the dark outline of the historic boundary shown on the historic district’s 2011 Sketch Map inadvertently excluded a section of the historic district between Cherry, Town, Chestnut, and Commerce streets. Thus, three properties that are within the 2011 boundary increase area were not included in the historic district nomination’s resource counts in Section 5 or the narrative description in Section 7. This additional documentation is submitted to add the three properties within this area to the district’s nomination. They are located at 123 S. Chestnut Street (contributing), 129-133 S. Chestnut Street (non-contributing), and 215 E. Cherry Street (contributing). The resource counts in Section 5 have been updated accordingly. An inventory entry and narrative description is included in Section 7. Section 10 is updated to include a corrected location coordinate. Additionally, a detail map showing the corrected boundary is included herein, as well as an aerial view Location Map that shows the historic district’s current boundaries in their entirety and the updated location coordinate from Section 10.

The following pages provide information to update the Marion Historic District, keyed to the numbered sections of the original nomination form.

**Section 5. Classification**

**Number of Resources within Property**

(Do not include previously listed resources in the count)

Contributing	Noncontributing	
<u>206</u>	<u>69</u>	buildings
<u>1</u>	<u>1</u>	sites
<u>0</u>	<u>0</u>	structures
<u>0</u>	<u>0</u>	objects
<u>207</u>	<u>70</u>	Total

**Section 7. Description**

**Inventory**

Following are the inventory entries and narrative descriptions for the three properties that were inadvertently omitted from the 2011 nomination’s inventory.

**United States Department of the Interior**  
**National Park Service**

**National Register of Historic Places**  
**Continuation Sheet**

Marion Historic District Boundary Increase
Name of Property
Smyth County, VA
County and State
N/A
Name of multiple listing (if applicable)

Section number Additional Documentation Page 2

216.) Commercial Building, 123 S. Chestnut St. 119-0012-0376 Contributing  
 Located at the southeast corner of E. Town and S. Chestnut streets with no setbacks, the c.1925 building occupies tax parcel 210-125-1. It is a one-story brick building, which most recently held a chiropractor's office, with a low-pitch hip roof and an arched main entry on Chestnut Street, sheltered by a fabric awning. The windows have fixed steel sash. Much of the brickwork looks modern, but some, particularly the common-bond north elevation foundation, looks original. The building is now connected to the c.1938 two-story building at 214-216 E. Cherry Street by a small, one-story brick hyphen. The parcel is depicted as vacant on the 1921 Sanborn Insurance map, but the 1927 Sanborn map shows the building, labeled as "Virginia Table Co. Inc. Genl Offices." On the 1941 updated Sanborn Map, it is labeled "Feed and Fertilizer."

217.) Commercial Building 129-133 S. Chestnut St. 119-0012-0377 Non-contributing  
 The c. 1970 building stands on the northeast corner of S. Chestnut and E. Cherry streets, fronting onto Chestnut with no setback. Although just one building, it is divided into three separate storefronts with separate addresses of 129, 131, and 133 S. Chestnut. It is a one-story flat-roofed brick-veneered commercial building built in at least two phases beginning ca. 1970. It has three storefronts facing Chestnut Street, capped with green metal awnings.

218.) Commercial Building, 215 E. Cherry St. 119-0012-0378 Contributing  
 This c.1938 building occupies the entire tax parcel 190-88-70A, located between E. Town and E. Cherry streets, with no setbacks. It is a two-story brick commercial building with roof parapets, fronting to the south onto E. Cherry Street. It has steel sash windows and a vaulted steel-truss roof. The brick walls are laid in common bond. There are three freight doors, a steel fire escape from the second floor, and a covered loading dock on the front of the building. The Cherry Street building is attached by a small one-story brick hyphen to the rear elevation of the one-story building at 129 S. Chestnut Street. The two buildings are oriented perpendicular to one another. The parcel is shown as vacant on the 1921 and 1927 Sanborn Insurance maps, but the Sanborn map updated in 1941 depicts the building, labeled as "Whol. Groc. Gov't Surplus."

**Section 10. Geographical Data**

Location Coordinates Correction

In the 2011 nomination, coordinate #26 was taken at the point where the historic boundary was drawn incorrectly. The coordinate has been updated accordingly and is now show in decimal degrees as currently preferred by the National Park Service. The coordinate location also is shown on the attached district Location Map.

26. Latitude: 36.832980 Longitude: -81.516840

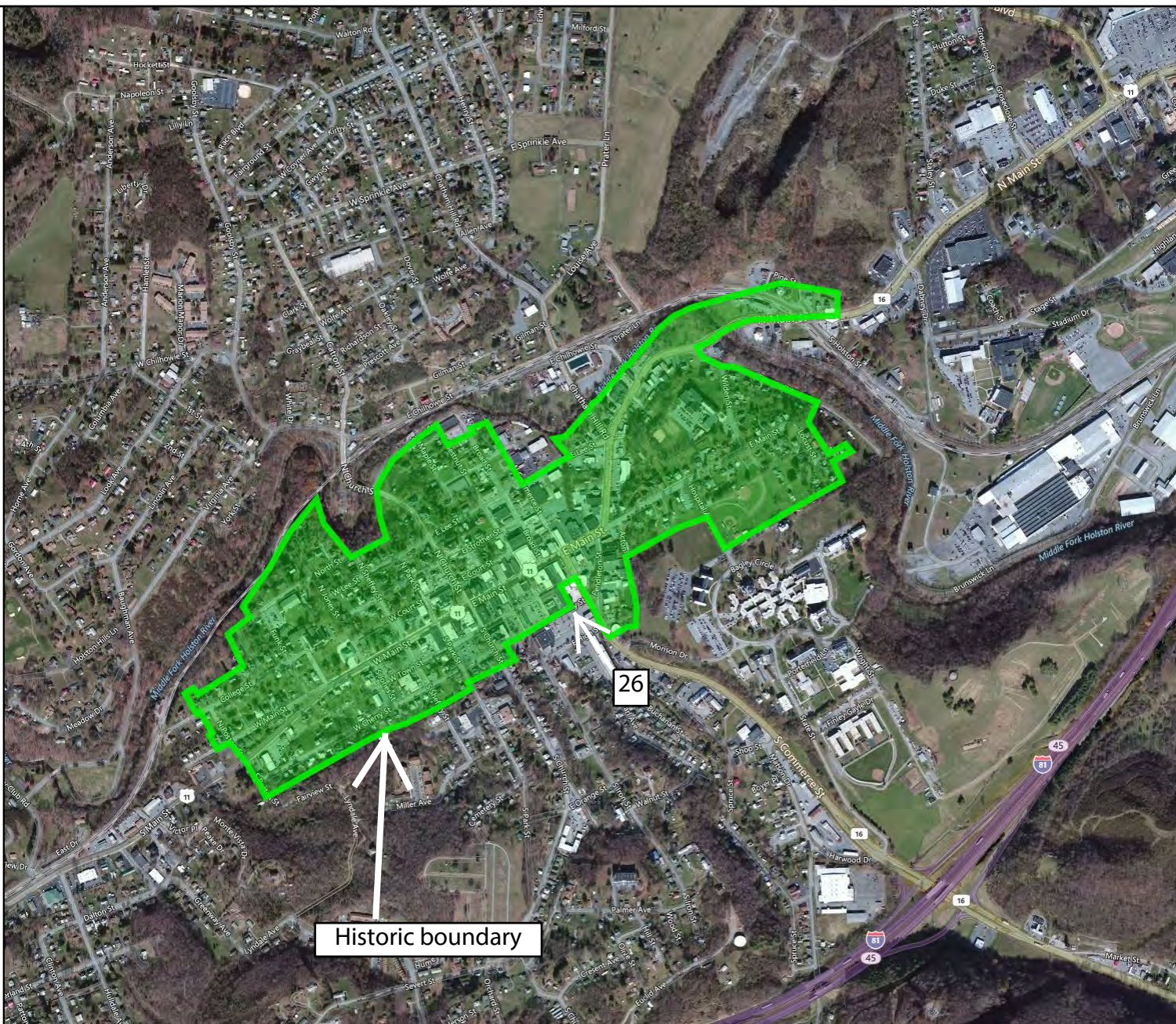


LOCATION MAP

Correction to Coordinate No. 26  
Marion Historic District Boundary  
Increase

Smyth County, Virginia  
DHR No. 119-0012

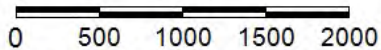
Location Coordinates:  
26. Latitude: 36.832980  
Longitude: -81.516840



Historic boundary



Feet



1:18,056 / 1"=1,505 Feet

**Title: Marion Historic District**

**Date: 3/8/2017**

*DISCLAIMER: Records of the Virginia Department of Historic Resources (DHR) have been gathered over many years from a variety of sources and the representation depicted is a cumulative view of field observations over time and may not reflect current ground conditions. The map is for general information purposes and is not intended for engineering, legal or other site-specific uses. Map may contain errors and is provided "as-is". More information is available in the DHR Archives located at DHR's Richmond office.*

*Notice if AE sites: Locations of archaeological sites may be sensitive to the National Historic Preservation Act (NHPA), and the Archaeological Resources Protection Act (ARPA) and Code of Virginia §2.2-3705.7 (10). Release of precise locations may threaten archaeological sites and historic resources.*



