

United States Department of the Interior
National Park Service

National Register of Historic Places Registration Form

This form is for use in nominating or requesting determinations for individual properties and districts. See instructions in National Register Bulletin, *How to Complete the National Register of Historic Places Registration Form*. If any item does not apply to the property being documented, enter "N/A" for "not applicable." For functions, architectural classification, materials, and areas of significance, enter only categories and subcategories from the instructions.

Listed:
VLR 6/16/2016
NRHP 8/15/2016

1. Name of Property

Historic name: Courtland School
Other names/site number: DHR File # 201-5005
Name of related multiple property listing:
Rosenwald Schools in Virginia (012-5041)
(Enter "N/A" if property is not part of a multiple property listing)

2. Location

Street & number: 25499 Florence Street
City or town: Courtland State: VA County: Southampton
Not For Publication: N/A Vicinity: N/A

3. State/Federal Agency Certification

As the designated authority under the National Historic Preservation Act, as amended,
I hereby certify that this X nomination ___ request for determination of eligibility meets
the documentation standards for registering properties in the National Register of Historic
Places and meets the procedural and professional requirements set forth in 36 CFR Part 60.
In my opinion, the property X meets ___ does not meet the National Register Criteria.
I recommend that this property be considered significant at the following
level(s) of significance:

___ national ___ statewide X local
Applicable National Register Criteria:
X A ___ B X C ___ D

Julie W. Langston 6/30/16
Signature of certifying official/Title: Date
Virginia Department of Historic Resources
State or Federal agency/bureau or Tribal Government

In my opinion, the property ___ meets ___ does not meet the National Register criteria.

Signature of commenting official: Date

Title : State or Federal agency/bureau
or Tribal Government

Courtland School
Name of Property

Southampton County, VA
County and State

4. National Park Service Certification

I hereby certify that this property is:

- entered in the National Register
- determined eligible for the National Register
- determined not eligible for the National Register
- removed from the National Register
- other (explain:) _____

Signature of the Keeper

Date of Action

5. Classification

Ownership of Property

(Check as many boxes as apply.)

- Private:
- Public – Local
- Public – State
- Public – Federal

Category of Property

(Check only **one** box.)

- Building(s)
- District
- Site
- Structure
- Object

Courtland School
Name of Property

Southampton County, VA
County and State

Number of Resources within Property

(Do not include previously listed resources in the count)

Contributing	Noncontributing	
<u>1</u>	<u>0</u>	buildings
<u>0</u>	<u>0</u>	sites
<u>0</u>	<u>2</u>	structures
<u>0</u>	<u>0</u>	objects
<u>1</u>	<u>2</u>	Total

Number of contributing resources previously listed in the National Register 0

6. Function or Use

Historic Functions

(Enter categories from instructions.)

EDUCATION: School

Current Functions

(Enter categories from instructions.)

SOCIAL: Civic: community center

DOMESTIC: Secondary structure: picnic shelter

Courtland School
Name of Property

Southampton County, VA
County and State

7. Description

Architectural Classification

(Enter categories from instructions.)

LATE 19TH AND EARLY 20TH CENTURY AMERICAN MOVEMENTS:

Bungalow/Craftsman

Materials: (enter categories from instructions.)

Principal exterior materials of the property: BRICK; WOOD; Weatherboard; METAL

Narrative Description

(Describe the historic and current physical appearance and condition of the property. Describe contributing and noncontributing resources if applicable. Begin with a **summary paragraph** that briefly describes the general characteristics of the property, such as its location, type, style, method of construction, setting, size, and significant features. Indicate whether the property has historic integrity.)

Summary Paragraph

The Courtland School is located in Southampton County in the Town of Courtland, Virginia, and sits on 3.27 acres at the northwest corner of the intersection of Florence and Bateman Streets. The site is in close proximity to, but is not included in, the potential Courtland Historic District (DHR File # 201-5001). Constructed in 1928, it is a two-teacher plan school built under the auspices of the Rosenwald Fund and of a type described in the Multiple Documentation Form *Rosenwald Schools of Virginia (012-5041)*. Built in the Craftsman architectural style, the one-story, frame school has a brick foundation, weatherboard siding, and side-gable, standing-seam metal roof. Centered on the primary (west) façade is a projecting, front-gable bay featuring a centered group of four, one-over-one double-hung sash windows. The projecting bay is flanked by recessed entries sheltered by pent roof overhangs. A pair of smaller windows, with six-over-six, double-hung sash, are to the side of each entry. The character-defining exterior architectural details retain a high degree of historic integrity. Much of the original interior plan and architectural features survive, although some have been covered with non-historic materials. The school yard currently includes a newer playground, basketball court and picnic shelter.

Courtland School
Name of Property

Southampton County, VA
County and State

Narrative Description

The Courtland School was constructed according to the plan for the “Two Teacher Community School, To Face East or West Only”, and incorporated “Floor Plan No. 20,” as was specified in the 1924 publication, *Community School Plans*, a publication of the Rosenwald Fund (see Figure 1 at the end of Section 8). This publication was an expansion of the earlier 1915 pamphlet, *The Negro Rural School and Its Relation to the Community*, produced by two African-American architecture professors at Tuskegee Institute and published by the Rosenwald Fund. Community School Plans were developed under the direction of Rosenwald Fund director Samuel L. Smith and included detailed drawings for schools that were to have anywhere between one to seven teachers. Separate plans were produced for each prototype, dictated by whether the school would be oriented north-south or east-west, with the goal of capturing the most natural light available. As described in the MPD *Rosenwald Schools in Virginia*, “The most recognizable architectural feature of Rosenwald schools was large banks of windows, an important feature in an era where rural schools seldom had the benefit of electricity. Samuel Smith’s plans specified room size and height, blackboard and desk placement, paint colors, and window shades, all in order to make the most of available light. Smith insisted that windows be placed so that light came only from the student’s left, and included alternative plans depending on the orientation of the school.”

Situated on 3.27 acres, the Courtland School property is located within the Town of Courtland and is bounded by private property on the north, Florence Street on the south, Bateman Street on the east and High Street on the west. The school building is located in the southeast corner of the lot. The site also contains a playground (2005; 2008) just to the north of the building, a hard surface basketball court (2006; non-contributing structure) in the northwest corner and a picnic shelter (2008; non-contributing structure) just west of the playground. The property is accessed from Florence Street on the south into a dirt parking area at the primary (west) façade of the school. The majority of the southwest quadrant of the property remains in open space, a feature emphasized in Rosenwald School plans. A small, recent, community garden exists immediately behind the school’s rear (east) façade. No longer extant, the site originally included two privies, one for girls and one for boys, which were located on the side of the lot that is opposite to Florence Street. The girls’ privy was 30 feet from the school building and the boys’ privy was 65 feet away.

The school is a one-story, frame building, clad with weatherboard and constructed on a continuous brick, common bond foundation. The main section of the school is rectangular in shape with a standing-seam metal gable roof with bracketed eaves. A c. 1965, small, one-story, frame, gable-roofed addition is located on the south end of the building and houses two bathrooms and a storage room. There is a central brick chimney which accommodated two coal-burning stoves, one for each classroom. Currently, a gas stove pipe utilizes the chimney and is visible on the exterior, extending from the top of the chimney. The two recessed front entrances are located on either side of the front-gabled projection that is centered in the middle of the façade. Each entrance is covered by a simple pent roof with supporting brackets, all original. Visible at the front of the recessed entrance areas is framing from screening that was installed c.

Courtland School
Name of Property

Southampton County, VA
County and State

1965. The walls of the recessed entrances are clad with the original wood, tongue-and-groove bead-board paneling. The original doors have been replaced with solid metal doors; however, the original transom windows are still present over each door. The entrance steps are concrete and a newer wood, wheelchair ramp has been added to the left (north) entrance. On either side of the front entrances are a pair of wood, six-over-six, double-hung, sash windows, separated by a simple vertical board. The pair on the left (north) side are replacements, which match the original window configuration. The projecting gable-front section of the school contains a bank of four, one-over-one, double-hung, sash windows which are replacements but installed within the same opening as the originals. Each sash is separated by a simple, vertical board. Centered above this bank of windows is a rectangular, louvered attic vent.

The rear (east-facing) elevation has two banks of windows which provide light for the two classrooms. Both of these banks contain the original six, wood, nine-over-nine, double-hung, sash windows, each separated by a simple, vertical board. The north gable-end wall has only a single rectangular louvered attic vent penetrating the wall, as well as a modern gas stove vent pipe. The south, gable-end wall has the small c. 1965 addition attached to it. The addition is frame, clad with weatherboard and has a gable, asphalt-shingled roof and two, four-over-four double-hung sash windows on the front, one of the same on the rear, and a smaller four-light fixed window on the end.

The interior plan is a typical, two-teacher school plan, identified in *Community School Plans* as floor plan No. 20. Each of the two front entrances opens directly into a classroom. The projecting front bay of the school housed the Industrial Room, another common feature of every Rosenwald School. The two classrooms were typically separated by a removable partition wall that allowed for the creation of one large space for use as an auditorium or for other community functions. Each classroom originally contained built-in blackboards and a cloak room.

In the Courtland School, the original wood flooring has been covered by ceramic tile. The original tongue-and-groove beaded board paneling has been covered by non-historic painted paneling in the two classrooms. The partition wall that originally separated the grades 1-3 classroom from the grades 4-7 classroom has been removed. The ceilings in both classrooms and the Industrial Room have been dropped and are composed of ceiling panels and lights. The blackboard and the beaded board paneling in the Industrial Room are intact; however, they have been painted. Additionally, a sink, counter, plumbing and appliances have been added to the Industrial Room and it is currently used as a kitchen for the community center.

An original built-in bookshelf in the grades 4-7 classroom remains intact with its original glass. This book storage area was originally designated as a "library" for the school. Both classroom cloak closets remain intact and the original flooring, four-panel doors with transom windows, and tongue-and-groove beaded board paneling are still visible in both.

The building is currently stable, however in need of minor repairs. Much of the exterior siding is in need of repair and repainting. The remaining original window sash are also in need of repair.

Courtland School
Name of Property

Southampton County, VA
County and State

The non-contributing picnic shelter was built in 2008 and is a rectangular shaped, open, wood frame structure on concrete piers with an asphalt shingle gable roof. The non-contributing paved basketball court was constructed in 2006.

Courtland School
Name of Property

Southampton County, VA
County and State

8. Statement of Significance

Applicable National Register Criteria

(Mark "x" in one or more boxes for the criteria qualifying the property for National Register listing.)

- A. Property is associated with events that have made a significant contribution to the broad patterns of our history.
- B. Property is associated with the lives of persons significant in our past.
- C. Property embodies the distinctive characteristics of a type, period, or method of construction or represents the work of a master, or possesses high artistic values, or represents a significant and distinguishable entity whose components lack individual distinction.
- D. Property has yielded, or is likely to yield, information important in prehistory or history.

Criteria Considerations

(Mark "x" in all the boxes that apply.)

- A. Owned by a religious institution or used for religious purposes
- B. Removed from its original location
- C. A birthplace or grave
- D. A cemetery
- E. A reconstructed building, object, or structure
- F. A commemorative property
- G. Less than 50 years old or achieving significance within the past 50 years

Courtland School
Name of Property

Southampton County, VA
County and State

Areas of Significance

(Enter categories from instructions.)

ARCHITECTURE

EDUCATION

ETHNIC HERITAGE: AFRICAN AMERICAN

Period of Significance

1928-1963

Significant Dates

1928

Significant Person

(Complete only if Criterion B is marked above.)

N/A

Cultural Affiliation

N/A

Architect/Builder

Smith, Samuel (architect)

O.J. High (builder)

Courtland School
Name of Property

Southampton County, VA
County and State

Statement of Significance Summary Paragraph (Provide a summary paragraph that includes level of significance, applicable criteria, justification for the period of significance, and any applicable criteria considerations.)

Education for Virginia's African-American population was first provided on a separate and unequal basis starting in 1869-1870. As described in the *Rosenwald Schools of Virginia (012-5014)* Multiple Property Documentation Form, under which the Courtland School is being nominated, due to inequitable funding, the earliest public schools built for African American students after the Civil War were taught in old or inadequate buildings. In the second decade of the twentieth century, African Americans were assisted in their educational endeavors by the philanthropic efforts of a northern foundation. In 1917, Julius Rosenwald, president of Sears Roebuck and Company, established the Julius Rosenwald Fund as a way to improve education for African Americans. Rosenwald was influenced by the work of Booker T. Washington at the Tuskegee Institute and that institution directed the efforts of the Fund until 1920 when a separate office was established in Nashville. The Foundation provided matching funds and school building plans. In Virginia, 367 schools in 79 localities were assisted with Rosenwald funds. Fifty percent of those constructed in Virginia were, like the Courtland School, of the two-teacher type. In the American South, 5,358 Rosenwald Schools were constructed, improving classroom conditions for over 648,000 African-American students, and providing educational opportunities for generations. Rosenwald schools often became sites for community pageants, exhibits, theatricals and other community activities and they often set the standard for the surrounding area with regard to architecture, sanitation and maintenance. Rosenwald schools in Virginia and the American South are the tangible reminders of the Fund's initiatives for the advancement of African-American education during the first half of the twentieth century. Within this historic context, the Courtland School is locally significant under Criterion A in the areas of Ethnic Heritage: African American and Education and is locally significant under Criterion C in the area of Architecture. The period of significance starts with the date of construction, 1928, and continues through 1963, when the school closed.

Narrative Statement of Significance (Provide at least **one** paragraph for each area of significance.)

The Courtland School meets the criteria for registration set out in the *Rosenwald Schools in Virginia (012-5041)* Multiple Property Documentation (MPD) form. It was built during the period between 1917-1932 using funds provided by the Julius Rosenwald Fund. The school's floor plan, workmanship and materials are typical of Rosenwald Schools and the Courtland School maintains a high degree of architectural integrity as well as its historic rural setting.

The Courtland School is an example of a subtype #2 school, as explicated in the MPD. Such schools were constructed after 1920 according to standardized plans created by architect Samuel Smith. In 1924, the Rosenwald Fund published a booklet, *Community School Plans*, in which examples of one- and two-room schools, as well as teachers' residences and privies, were provided. The Courtland School was constructed according to Floor Plan No. 20, a two-room

Courtland School
Name of Property

Southampton County, VA
County and State

school constructed on an east-west axis to maximize natural light (see Figure 1 at the end of this section). The smaller, more modest standardized designs typically had a slight Craftsman or Colonial Revival stylistic influence; the Courtland School's detailing is an example of the Craftsman style. On the interior, the Courtland School featured the industrial room, cloak rooms, and classrooms specified in the standardized plans.

As an intact example of a Rosenwald school, the Courtland School has significance under Criterion A in the areas of Education and Ethnic Heritage: African American, as its historic context is within the parameters set forth in the *Rosenwald Schools of Virginia (012-5014)* MPD. The Courtland School also is a significant example of a standardized Rosenwald school plan, thus meeting Criterion C in the area of Architecture as explained in the MPD. The Courtland School meets the registration requirements specified in the MPD, as a frame school building with modest architectural details, retaining its original location and rural setting, and having a high degree of integrity of design, workmanship, and materials. The school's integrity of association and feeling is bolstered by the property's rural setting. All of these aspects are expanded upon in the following narrative.

Historical Background

Courtland School is located in Southampton County, which was established by the Virginia House of Burgesses in 1794. The county gained notoriety as the site of the Nat Turner Insurrection which took place in 1831. Turner, an enslaved African American person and educated minister, believed that he was chosen by God to lead his people out of slavery. On August 21, 1831, he and several followers initiated his slave uprising by killing his owner and the owner's family and at least 55 white individuals living in Southampton County before they were arrested. Turner's trial and execution took place in Jerusalem which is now known as Courtland. The revolt made a profound and irrevocable impact on the education of African Americans all over the American South, especially Southampton County, where the enslaved and free African American populations together outnumbered the white population. Fears of another slave rebellion prompted the Virginia General Assembly to pass new laws prohibiting education of enslaved people and free persons of color, restricting other civil rights for free African Americans, and all but eliminating schools and autonomous religious meetings for African Americans as well as education for enslaved preachers. Overall, the laws enacted in the aftermath of the Turner Rebellion enforced widespread illiteracy among Virginia's African American population. After the Civil War, African Americans of all ages flocked into schools that were created by the Freedmen's Bureau and by their own efforts.¹ The Freedmen's Bureau in Southampton County, however, met with little success. Efforts to help African Americans were thwarted by white supremacist groups such as the Ku Klux Klan (KKK) as well as relentless hostilities by whites toward northerners who ventured into the area to improve living conditions for the newly freed. African Americans' poverty, combined with opposition from most local whites, meant that schools open to African Americans in Southampton County were far and few between.

¹ Crofts, Daniel W. *Old Southampton: Politics and Society in a Virginia County, 1834-1869*. (Charlottesville: U of Virginia, 1992.) 263

Courtland School
Name of Property

Southampton County, VA
County and State

The public school system in Virginia originated in the 1869 Reconstruction-era state constitution, which mandated creation of the Commonwealth's first system of free public schools. Federal judge John C. Underwood presided over the constitutional convention, and the resultant document is also known as the Underwood Constitution. Prior to the Civil War, most Virginians, whether white, African American, or Virginia Indian, had little access to public schooling, while children of only the wealthiest families either attended tuition-based private schools or received in-home private tutoring. After the 1869 state constitution mandated a free public school system, local governments were required to establish and fund schools for children within their jurisdictions. Although the constitutional convention was dominated by "Radical Republicans" dedicated to reforming Virginia's previously slavery-based society, the Underwood Constitution mandated racially segregated public education, with white, African American, and Virginia Indian children attending separate schools.²

Starting in 1870, the General Assembly determined the funding for the educational system and appropriated the cost between state and local government. The State Board of Education was established to oversee this new system. Supervision of the individual schools was delegated to local school boards. Due to rampant inequities in funding, African Americans reaped few benefits from the state's newly created public education system. Racial segregation in schools, as well as virtually all other aspects of life throughout Virginia, was enshrined in state and local laws by the turn of the twentieth century, a period known as the "Jim Crow" era. Conditions worsened when the Underwood Constitution was replaced with the 1902 Virginia Constitution, which took even stronger measures to maintain racial segregation. Section 140 Article 9 stated that white and "colored" children were not to be taught in the same school. Jim Crow laws remained in place until the post-World War II era when the Civil Rights movement succeeded in destroying the legal, social, and cultural justifications for segregation. Notably, the 1954 Supreme Court *Brown v The Board of Education* decision ended the legality of segregation in American public schools, but almost two decades passed before all of Virginia's schools were fully integrated.

It is not known when the first African-America school was built in Courtland, but the land where this school was built was purchased in 1899. Local resident James Scott, who is 101, recounted that the old school "was kind of long" with big unpainted weatherboards. The students entered through one door. He could not remember if there were windows, but lanterns were on the side of the walls. The students played in the front of the school and an artesian n well provided water. He attended this school during his "primer" years. The walk to school was about three miles. He chuckled when he relayed that the white children "chucked stuff out of the windows" of their school buses at the walkers. Scott remembered that the school building was moved by horse and logs to a lot in the neighborhood. He briefly attended the Courtland Rosenwald School. His mother became ill and he stayed at home to take care of her. His children went on to attend the Courtland School as well.

² "Remaking Virginia: Transformation Through Emancipation: Education," at <http://www.virginiamemory.com/online-exhibitions/exhibits/show/remaking-virginia/education>.

Courtland School
Name of Property

Southampton County, VA
County and State

As many as eight Rosenwald schools were built in Southampton County. Records from the school board indicate that the Courtland School was built in 1928 and is an example of the Rosenwald Fund's Floor Plan No. 20 for a two-teacher school (see Figure 1 at the end of this section). The total cost for the Courtland School's construction was \$4000. The African-American community's contribution was \$1000 (raised through the effort of the Courtland School League), public contributions were \$1500 (borrowed from the Literacy Fund, May 1928), and the Rosenwald Fund contribution was \$500. Seven other Rosenwald schools were built in Southampton County during the 1917-1932 funding era: Tucker Swamp (called Rosenwald by the locals), Sands, Ebenezer, White Meadow, Franklin School, #9 Whitehead Road, and Boykins. Courtland School is the only school that is still actively used by the community. Sands and Tucker Swamp have been converted into houses. At Franklin, a brick building still stands. White Meadow and Ebenezer have been torn down. Boykins School has fallen into disrepair.

The Courtland School – Criterion A – Ethnic Heritage: African American and Education

The work to build a Rosenwald school in Courtland being in 1924, when a delegation of African American parents approached the Southampton County school board on April 1, requesting that a new school be built. The delegation was told to return when they had raised \$1500. For the Rosenwald schools, both Booker T. Washington and Julius Rosenwald requested that each community that needed a school be required to raise a certain portion of the money. The public school system needed to contribute as well. If those requirements were fulfilled, then the Rosenwald Fund provided the remaining amount needed to build the school.

The history of the Courtland School was chronicled through Southampton County school board records and the *Norfolk Journal and Guide Newspaper*. It was through the diligence and persistence of the Courtland Public School League and the African-American community at large that the Courtland School was successfully built and maintained.

On May 9, 1925, the first fundraiser was held and in December 1925, the Courtland Public School League was officially organized and officers were duly elected to raise funds for the Courtland School. The League's president was John Napoleon Darden, who owned a cleaning and press business.

In 1925, a motion was made by the school board that the present land on which the old school was located be exchanged for a two-acre parcel owned by Sarah Diggs. The old school was to remain in use until a new building was built. If the new building was not completed within 15 months of the date of the deed, the exchanged property would go back to the owner. The Rosenwald program called for school properties to include a minimum of two acres, first in order to create a landscape with the school as its focal point, and second to have the school ideally surrounded by a shop, teachers' home as well as a playground, practice garden, wells, and privies.

Undaunted, the patrons returned on June 1, 1926, again requesting the building of a new school. A chairman was appointed to make a recommendation to the school board regarding the

Courtland School
Name of Property

Southampton County, VA
County and State

proposal. According to the *Journal and Guide* newspaper article of June 12, 1926, the patrons were assured that a four-room Rosenwald school would be built, and optimistically projected it would be in time for the opening of the next school term.

At the February 1927 school board meeting, a letter was read from the State Supervisor of Colored Schools to the effect that the Rosenwald appropriation for one- and two-room schools would be materially reduced after July 1, 1927, and advised local school boards, if possible, to complete any one- or two-room buildings under consideration. The Supervisor also advised that applications for Rosenwald aid would not be accepted after March 15 for the remainder of that fiscal year. Meanwhile, the Courtland Public School League requested that a three-room school be built rather than the two-room plan originally requested. In March 1927, the transfer of deed for the school property was ordered to be placed on record. At the October 1927 Southampton County school board meeting, the board motioned that an order of the court be secured for the trading of the property at any time and that committee be established to arrange with Courtland's African American community to pay \$1000 either by cash or note.

It was four years and 2 months after the original 1924 request that the school board, at its June 1928 meeting, accepted the lowest of the four bids and awarded the contract to build the Courtland School to O. J. High of Sedley, Virginia, for \$3,272.00. The construction process began the following month according to the *Journal and Guide Newspaper*. The students entered the new school on November 2, 1928, under principal Rev. W. A. Blackwell and his wife, C. D. Blackwell, assistant principal. Electricity was approved to be installed one month after the opening of the building. The \$25 balance of the \$500 note held by the school board was paid off on February 13, 1934.

Under the leadership of the Courtland Public School League president, John Darden, two additional acres of property adjacent to the school were purchased in 1929 for \$100 for the purpose of having a proper amount of playing space. W.T. Sebrell, a white resident of Courtland, gave \$50.00 towards the effort.

Before the opening session of the 1929 school year, the patrons petitioned the school board to operate on a seven-month basis with three teachers and an added eighth grade. The request to add eighth grade was not granted. Thus, one classroom utilized grades 1-3, having 15-25 students and the other housed grades 4-7, with 30-40 students. There had been a request in 1923 from a committee from four different local schools (Sands, Darden Mill, Ricks, and Courtland) that a Normal Industrial School be placed in Courtland, but there was no high school for African Americans in Southampton County until 1937.

After Rev. W. A. Blackwell, other principals of the Courtland School included B. G. V. Williamson (1944), Louis M. Cannon (1945), Eunice Lyttle (1945-1947), and Herbert Sprewell (1948-1963), who taught grades 4-7. Mr. F. E. Nottingham served as a teacher in 1945 and Hattie Moss (dubbed "Mrs. Mothball" by the students, according to Catherine Britt) taught from 1946-1947. Mrs. Sadie Jane Womble taught grades 1-3 from 1948-1963.

Courtland School
Name of Property

Southampton County, VA
County and State

When talking to former students, there were many vivid and fond memories of the teachers, the building, and the educational and life lessons learned at the Courtland School. Many former students went on to become doctors, police officers, nurses, business owners, accountants, managers, entrepreneurs, supervisors as well as other successful occupations. From 1999-2012, former student Charles Turner served as the first African-American Superintendent of Southampton Public Schools. His grandfather, treasurer of the Courtland School League, was part of the 1924 delegation requesting a new school.

When the school was closed in 1963, the community rallied to purchase the land and building. The Courtland Recreation Center was formed and the land was purchased for \$2,200.00. In 2003, the name was changed to the Courtland Community Center, a nonprofit organization. Two grandchildren and one great-niece of Rosenwald school students have served as officers on the Courtland Community Board. John N. Darden, president of the Courtland School League, was part of the original delegation that approached the school board. The current site has a playground, picnic shelter, basketball and volleyball courts, dirt track, and open play areas. The interior serves as a food bank distribution site and local polling place, and provides computers with free wi-fi access, along with other educational and indoor recreational activities. Unlike many surviving Rosenwald schools in Virginia, the Courtland School continues its use as a place of education and community service for the residents of the Town of Courtland.

Architecture – Criterion C

The Courtland School is an excellent example of the Rosenwald Two-Teacher Community School plan, designed for the east-west axis and incorporating Floor Plan No. 20. Designed to maximize natural light, efficiency of space and provide features necessary to the education and comfort of the students, the Courtland School represents early-twentieth-century innovation in rural school design. The classrooms include built-in blackboards, cloakrooms, and accommodations for a heating source, such as coal-burning stove. Regardless of the number of teachers any given Rosenwald school was designed for, the school plan, like the Courtland School, included an Industrial Room in its design. The purpose of the Industrial Room was to provide for the teaching of skills in a variety of areas including agricultural methods and homemaking. The Courtland School retains many of its original architectural features as described in Section 7 of this nomination.

Like many of the frame, weatherboard-clad Rosenwald schools, the Courtland School incorporates Craftsman-style architectural features, a style popular in the first several decades of the twentieth century. These stylistic features are seen in the use of a side-gable roof with bracketed eaves, simple, pent-roofed overhangs at the entrances, weatherboard siding, multiple-light windows grouped together in pairs and banks of four or more, and beaded tongue-and-groove wainscot at the recessed entrances as well as throughout the interior. The Courtland School retains a high degree of architectural integrity and is one of the best preserved Rosenwald Schools in Southampton County.

Courtland School
Name of Property

Southampton County, VA
County and State

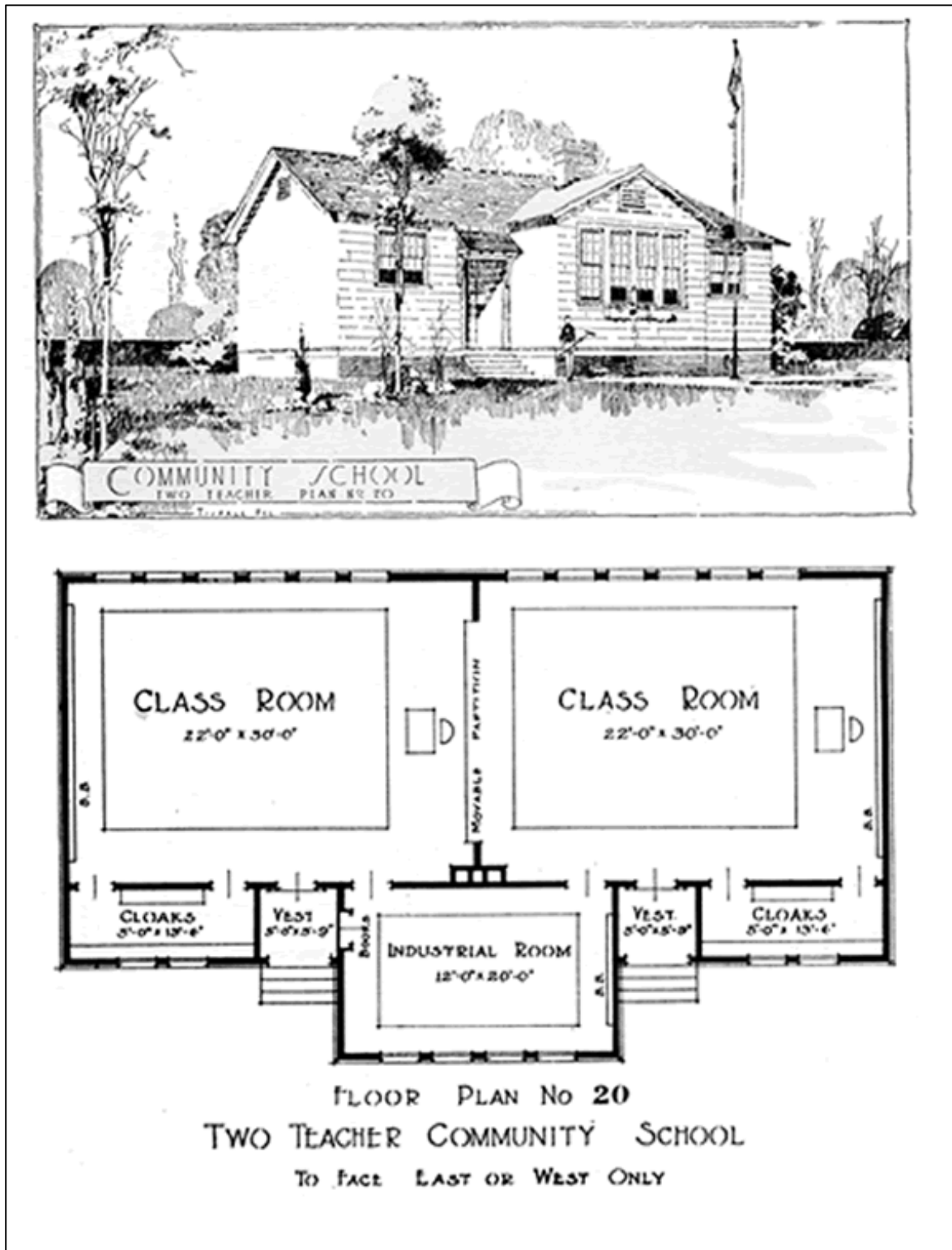


Figure 1. Rosenwald School, Two-Teacher Plan, East-West Axis

Courtland School
Name of Property

Southampton County, VA
County and State

9. Major Bibliographical References

Bibliography (Cite the books, articles, and other sources used in preparing this form.)

Annual report 1938: Southampton County, Virginia, July 1, 1938, Southampton Co. Va., New Pub. Co., 1938 Print.

Aptheker, Herbert. *Nat Turner's Slave Rebellion: Together with the Full Text of the So-called "Confessions" of Nat Turner Made in Prison in 1831*. New York: Published for A.I.M.S. by Humanities, 1966. Print. S, R.

Bogger, Thomas. *Readings in Black & White Lower Tidewater Virginia*. Portsmouth: Portsmouth Public Library, 1982. Print.

Crofts, Daniel W. *Old Southampton: Politics and Society in a Virginia County, 1834-1869*. Charlottesville: University of Virginia, 1992. Print.

Deed of sale, Southampton School Board to Sarah F. Diggs. Southampton County Deed Book 69, p 421

Green, Bryan Clark. *Rosenwald Schools in Virginia (012-5041)*. Multiple Property Documentation Form. 2004. Copy available at the Virginia Department of Historic Resources, Richmond, VA. VDHR File # 012-5041.

Guild, June. *Fauquier County Va.* Afro-American Historical Society Association, n. d. Print.

Harlan, Louis R. *Booker T. Washington: The Wizard of Tuskegee, 1901-1915*. New York: Oxford University Press, 1983. Print.

Hoffschwelle, Mary S. *The Rosenwald Schools of the American South*. Gainesville, FL: University of Florida, 2006. Print.

Journal and Guide [Norfolk, VA] 9 May 1925: n. pag. Print.

Journal and Guide [Norfolk, VA] Nov 13. 1925: n. pag. Print.

Journal and Guide [Norfolk, VA] 10 Feb. 1926: n. pag. Print.

Journal and Guide [Norfolk, VA] 12 June 1926: n. pag. Print,

Journal and Guide [Norfolk, VA] 13 Nov. 1926: n. pag. Print.

Journal and Guide [Norfolk, VA] 3 Jan. 1928: n. pag. Print.

Courtland School
Name of Property

Southampton County, VA
County and State

Journal and Guide [Norfolk, VA] 14 July 1928: n. pag. Print.

Journal and Guide [Norfolk, VA] 27 Oct. 1928: n. pag. Print.

Journal and Guide [Norfolk, VA] 2 Nov. 1928: n. pag. Print.

Kanak, Richard Tyler. *Antebellum Southampton County, Virginia, 1840-1860*. N.p.: n.p., 1991. Print.

Krawchuk, B. J. *A Historical Abstract of Public Education in Southampton County, Virginia*. N.p.: n.p., 1978. Print.

McClenny, Mildred S., and Katherine K. Futrell. *Still Sits the Little School-house: A Compilation of Little Schools in Southampton County's Early History*. Franklin, VA: Southampton County Historical Society, 2004. Print.

Oates, Stephen B. *The Fires of Jubilee: Nat Turner's Fierce Rebellion*. New York: Harper & Row, 1975. Print.

"New School House Assured in Courtland." *Journal and Guide* [Norfolk, VA] June-July 1926: n. pag. Print.

Parramore, Thomas. *Southampton County*. Published for the Southampton County Historical Society, University Press of Virginia, 1978.

"Patrons after New School." *Journal and Guide* [Norfolk, VA] May-June 1925: n. pag. Print.

Richard, Rogers Dey. *The History of Lower Tidewater Virginia*. New York: Lewis Historical Pub., 1959. Print.

School Plans. *Two Teacher Plan to Face East or West*.

http://www.rosenwaldplans.org/School_Plans/TwoTEachEW/TwoTeachEW.htm. Accessed 9/29/2003.

Silber, Phyliss. Second Union School. National Register of Historic Places Registration Form. 2005. Copy available at the Virginia Department of Historic Resources, Richmond, VA. VDHR File # 067-5051.

Southampton County School Board. (1923- 43). Courtland Virginia.

Washington, Booker T. *Up from Slavery, an Autobiography*. Garden City, NY: Doubleday, 1963. Print.

Courtland School
Name of Property

Southampton County, VA
County and State

Watkins, Benjamin Thomas. *An Evaluation of the Program of School Consolidation in Southampton County*. Charlottesville, VA: n.p., 1935. Print .

Previous documentation on file (NPS):

- preliminary determination of individual listing (36 CFR 67) has been requested
- previously listed in the National Register
- previously determined eligible by the National Register
- designated a National Historic Landmark
- recorded by Historic American Buildings Survey # _____
- recorded by Historic American Engineering Record # _____
- recorded by Historic American Landscape Survey # _____

Primary location of additional data:

- State Historic Preservation Office
- Other State agency
- Federal agency
- Local government
- University
- Other

Name of repository: Department of Historic Resources, Richmond, VA; Rosenwald Archives, Fisk University, Nashville, TN

Historic Resources Survey Number (if assigned): VDHR #201-5005

10. Geographical Data

Acreage of Property 3.27

Use either the UTM system or latitude/longitude coordinates

Latitude/Longitude Coordinates

Datum if other than WGS84: _____

(enter coordinates to 6 decimal places)

1. Latitude: -77.06772 Longitude: 36.72193
2. Latitude: Longitude:
3. Latitude: Longitude:
4. Latitude: Longitude:

Or

UTM References

Datum (indicated on USGS map):

Courtland School
Name of Property

Southampton County, VA
County and State

NAD 1927 or NAD 1983

- | | | |
|----------|-----------|-----------|
| 1. Zone: | Easting: | Northing: |
| 2. Zone: | Easting: | Northing: |
| 3. Zone: | Easting: | Northing: |
| 4. Zone: | Easting : | Northing: |

Verbal Boundary Description (Describe the boundaries of the property.)

The historic boundary is drawn to match the lot lines of the Courtland School's tax parcel, recorded by Southampton County as parcel number 60A-2-58. The true and correct historic boundaries are shown on the attached map entitled "Tax Parcel Map."

Boundary Justification (Explain why the boundaries were selected.)

The historic boundary is drawn to encompass the entirety of the Courtland School's historic setting and the acreage associated with the property during its decades of use as a school. The boundary all encompasses all known historic resources.

11. Form Prepared By

name/title: Maxine Nowlin; Elizabeth Hoge Lipford (VDHR)
organization: Courtland Community Center; Department of Historic Resources
street & number: 25499 Florence Street; 2801 Kensington Avenue
city or town: Courtland; Richmond state: VA zip code: 23837; 23221
e-mail: max_now@yahoo.com
telephone: 757-653-2457
date: March 1, 2016

Additional Documentation

Submit the following items with the completed form:

- **Maps:** A **USGS map** or equivalent (7.5 or 15 minute series) indicating the property's location.
- **Sketch map** for historic districts and properties having large acreage or numerous resources. Key all photographs to this map.
- **Additional items:** (Check with the SHPO, TPO, or FPO for any additional items.)

Courtland School
Name of Property

Southampton County, VA
County and State

Photographs

Submit clear and descriptive photographs. The size of each image must be 1600x1200 pixels (minimum), 3000x2000 preferred, at 300 ppi (pixels per inch) or larger. Key all photographs to the sketch map. Each photograph must be numbered and that number must correspond to the photograph number on the photo log. For simplicity, the name of the photographer, photo date, etc. may be listed once on the photograph log and doesn't need to be labeled on every photograph.

Photo Log

Name of Property: Courtland School
City or Vicinity: Town of Courtland
County: Southampton County State: Virginia
Photographer: Lauren Gwaley (Photos 1-8; 13)
Photographer: Maxine Nowland (Photos 9-12)
Date Photographed: Gwaley – 3/10/2016
Nowland – 8/19/2013

Description of Photograph(s) and number, include description of view indicating direction of camera:

- 1 of 13: Front Façade, Facing East
- 2 of 13: South Façade with c. 1965 addition, Facing Northeast
- 3 of 13: Rear Façade, Facing Northwest
- 4 of 13: North Façade, Facing South
- 5 of 13: Picnic Shelter and Playground, Facing Northeast
- 6 of 13: Front Entrance Detail (south entrance), Facing East
- 7 of 13: Front Entrance Detail (north entrance), Facing East
- 8 of 13: Rear Façade Detail, Facing Northwest
- 9 of 13: Interior, North Classroom, Facing North
- 10 of 13: Interior, Blackboard Detail, Industrial Room, South Wall, Facing South
- 11 of 13: Interior, Library Cabinet, South Classroom, West Wall, Facing Southwest
- 12 of 13: Interior, Cloakroom Entrance, North Classroom, Facing West

Courtland School
Name of Property

Southampton County, VA
County and State

13 of 13: Interior, Cloakroom, North Classroom, Facing North

Paperwork Reduction Act Statement: This information is being collected for applications to the National Register of Historic Places to nominate properties for listing or determine eligibility for listing, to list properties, and to amend existing listings. Response to this request is required to obtain a benefit in accordance with the National Historic Preservation Act, as amended (16 U.S.C.460 et seq.).

Estimated Burden Statement: Public reporting burden for this form is estimated to average 100 hours per response including time for reviewing instructions, gathering and maintaining data, and completing and reviewing the form. Direct comments regarding this burden estimate or any aspect of this form to the Office of Planning and Performance Management, U.S. Dept. of the Interior, 1849 C. Street, NW, Washington, DC.



Virginia Cultural Resource Information System

LOCATION MAP

Courtland School

Town of Courtland, Southampton

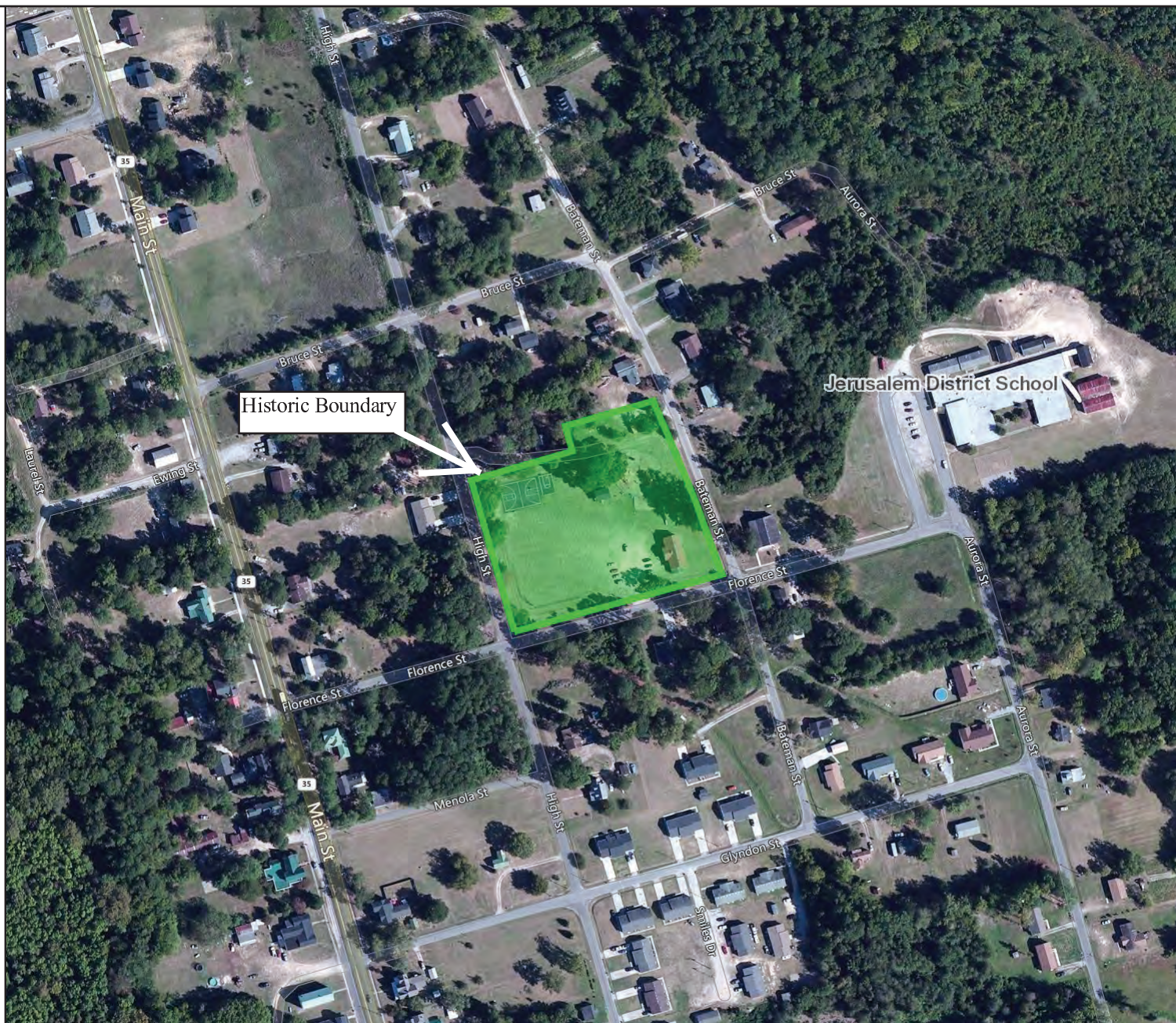
County, Virginia

DHR No. 201-5005

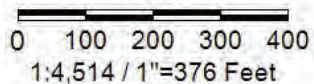
Latitude/Longitude Coordinates

Latitude: -77.06772

Longitude: 36.72193



Feet

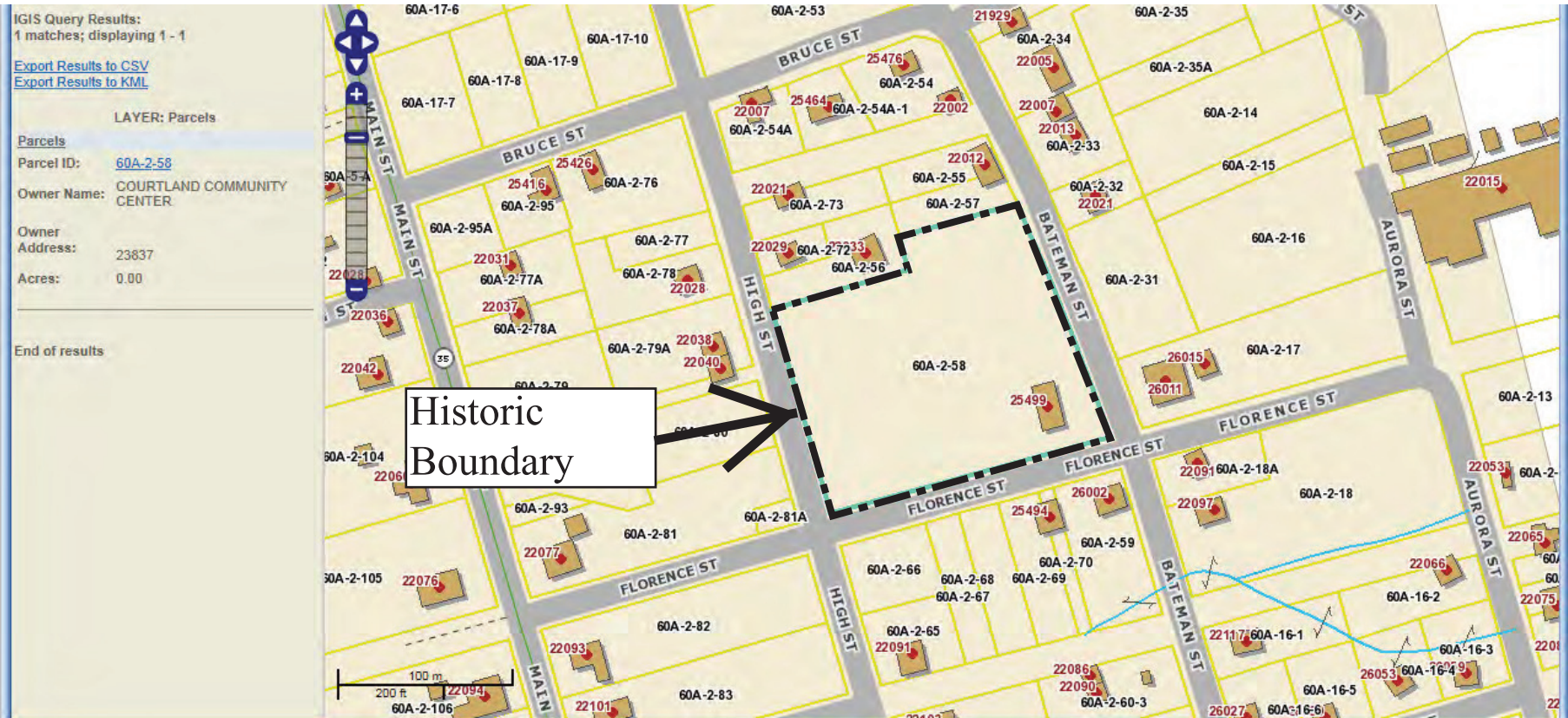


Title: Courtland School Location Map

Date: 3/10/2016

DISCLAIMER: Records of the Virginia Department of Historic Resources (DHR) have been gathered over many years from a variety of sources and the representation depicted is a cumulative view of field observations over time and may not reflect current ground conditions. The map is for general information purposes and is not intended for engineering, legal or other site-specific uses. Map may contain errors and is provided "as-is". More information is available in the DHR Archives located at DHR's Richmond office.

Notice if AE sites: Locations of archaeological sites may be sensitive the National Historic Preservation Act (NHPA), and the Archaeological Resources Protection Act (ARPA) and Code of Virginia §2.2-3705.7 (10). Release of precise locations may threaten archaeological sites and historic resources.



TAX PARCEL MAP
 Courtland School
 Town of Courtland,
 Southampton County,
 Virginia
 DHR No. 201-5005

SKETCH MAP/ PHOTO KEY

Courtland School

Town of Courtland,

Southampton County, Virginia

DHR No. 201-5005

- 1. School (Contributing Building)
- 2. Basketball Court (Non-contributing Structure)
- 3. Picnic Shelter (Non-contributing Structure)



Photo Locations



Feet

0 20 40 60 80

1:1,128 / 1"=94 Feet

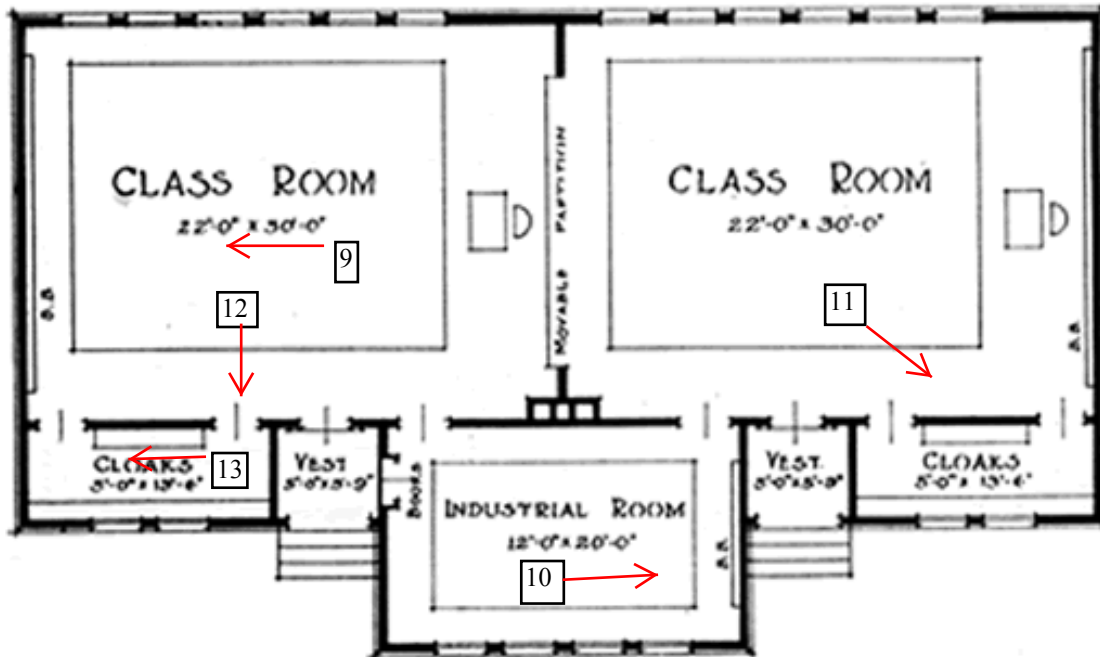


Title: Courtland School

Date: 3/10/2016

DISCLAIMER: Records of the Virginia Department of Historic Resources (DHR) have been gathered over many years from a variety of sources and the representation depicted is a cumulative view of field observations over time and may not reflect current ground conditions. The map is for general information purposes and is not intended for engineering, legal or other site-specific uses. Map may contain errors and is provided "as-is". More information is available in the DHR Archives located at DHR's Richmond office.

Notice if AE sites: Locations of archaeological sites may be sensitive the National Historic Preservation Act (NHPA), and the Archaeological Resources Protection Act (ARPA) and Code of Virginia §2.2-3705.7 (10). Release of precise locations may threaten archaeological sites and historic resources.



FLOOR PLAN No 20
 TWO TEACHER COMMUNITY SCHOOL
 TO FACE EAST OR WEST ONLY



SKETCH MAP/ PHOTO KEY
 Courtland School
 Town of Courtland,
 Southampton County, Virginia
 DHR No. 201-5005

 Photo Locations